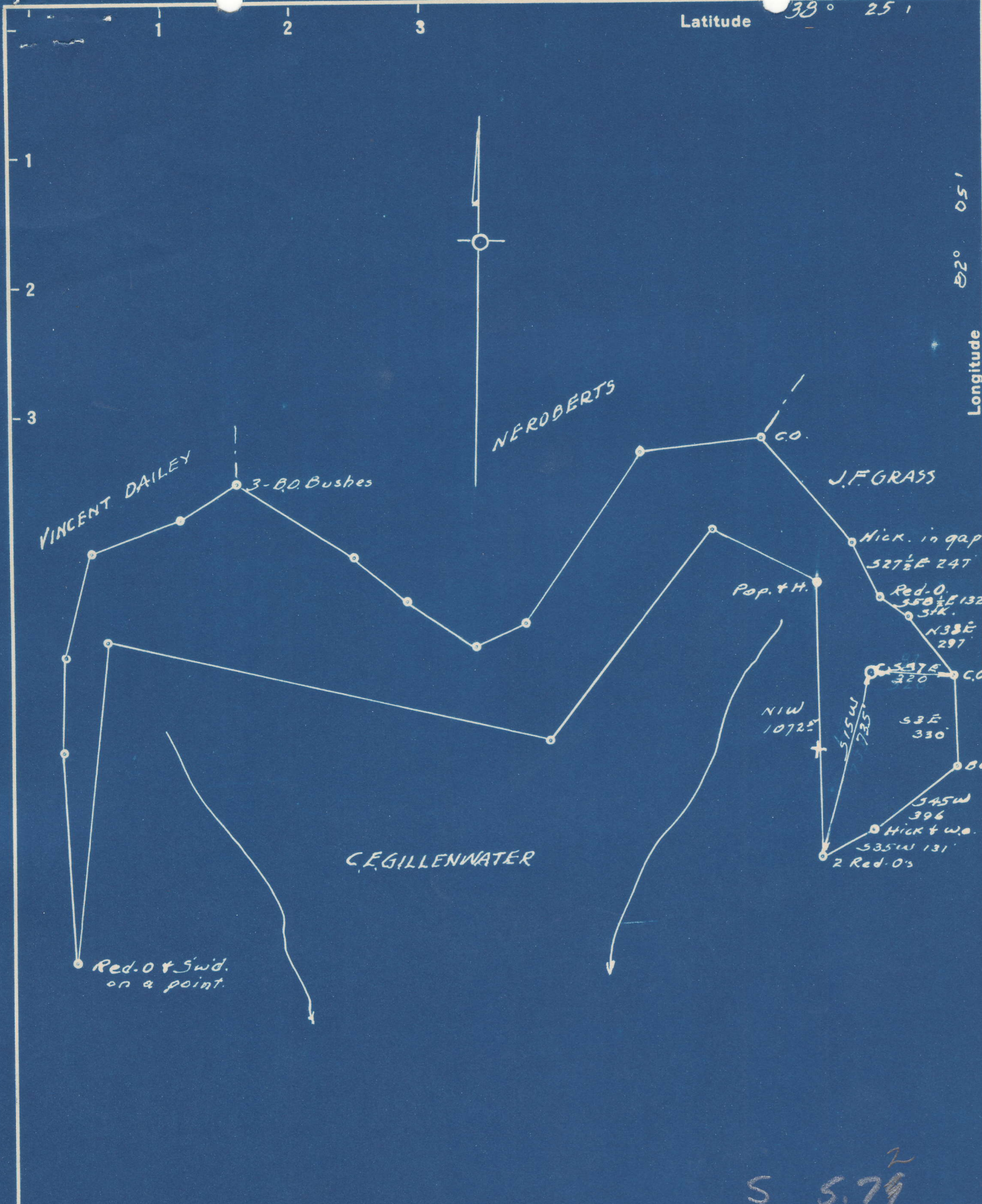


Latitude  $38^{\circ} 25'$

Longitude  $82^{\circ} 05'$



New Location..   
 Drill Deeper.....   
 Abandonment.....

S 5.79  
 W 1.31

Company G.L. MEABON  
 Address HUNTINGTON, W.VA  
 Farm C. GILLENWATER  
 Tract \_\_\_\_\_ Acres 38 Lease No. \_\_\_\_\_  
 Well (Farm) No. 2 Serial No. \_\_\_\_\_  
 Elevation (Spirit Level) 1073  
 Quadrangle MILTON  
 County LINCOLN District CARROLL  
 Engineer Basil S. Burgess  
 Engineer's Registration No. 469  
 File No. \_\_\_\_\_ Drawing No. \_\_\_\_\_  
 Date 9-28-50 Scale 1" = 500'

STATE OF WEST VIRGINIA  
 DEPARTMENT OF MINES  
 OIL AND GAS DIVISION  
 CHARLESTON

**WELL LOCATION MAP**  
 FILE NO. LIN-929-A

+ Denotes location of well on United States Topographic Maps, scale 1 to 62,500, latitude and longitude lines being represented by border lines as shown.

- Denotes one inch spaces on border line of original tracing.



1149

STATE OF WEST VIRGINIA  
DEPARTMENT OF MINES  
OIL AND GAS DIVISION

WELL RECORD

Permit No. Permi-924-B-2 Oil or Gas Well X (KIND)

Company G. L. Meabon  
 Address Huntington, W. Va.  
 Farm C. E. Gillenwater Acres 38  
 Location (waters) Mud River  
 Well No. 2 Elev. 1073  
 District Carroll County Lincoln  
 The surface of tract is owned in fee by John Ashworth  
 Address Hamlin, W. Va.  
 Mineral rights are owned by C. E. Gillenwater  
 Address Hamlin,  
 Drilling commenced Dec. 15 1922  
 Drilling completed Dec 27 1922  
 Date Shot Dec 29, 1922 From 979 To 989  
 With 40 Zts  
 Open Flow /10ths Water in \_\_\_\_\_ Inch  
 /10ths Merc. in \_\_\_\_\_ Inch  
 Volume \_\_\_\_\_ Cu. Ft.  
 Rock Pressure \_\_\_\_\_ lbs. \_\_\_\_\_ hrs.  
 Oil 7 \_\_\_\_\_ bbls., 1st 24 hrs.  
 Fresh water \_\_\_\_\_ feet \_\_\_\_\_ feet  
 Salt water \_\_\_\_\_ feet \_\_\_\_\_ feet

Casing and Tubing	Used in Drilling	Left in Well	Packers
Size			Kind of Packer
16			
13			
10			Size of
8 1/4			
6 5/8	962	962	Depth set
5 3/16			
3			Perf. top
2			Perf. bottom
Liners Used			Perf. top
			Perf. bottom

CASING CEMENTED \_\_\_\_\_ SIZE \_\_\_\_\_ No. Ft. \_\_\_\_\_ Date \_\_\_\_\_  
 COAL WAS ENCOUNTERED AT \_\_\_\_\_ FEET \_\_\_\_\_ INCHES  
 \_\_\_\_\_ FEET \_\_\_\_\_ INCHES FEET \_\_\_\_\_ INCHES  
 \_\_\_\_\_ FEET \_\_\_\_\_ INCHES FEET \_\_\_\_\_ INCHES

Formation	Color	Hard or Soft	Top	Bottom	Oil, Gas or Water	Depth Found	Remarks
Clay			0	20			
Sand			20	30			
Slate			30	95			
Sand			95	125			
Slate			125	240			
Sand			240	275			
Slate & Shell			275	300			
Slate			300	395			
Sand			395	446			
Slate			446	455			
Sand			455	460			
B. Slate			460	470			
Sand			470	540			
Broken Sand			540	552			
Sand			552	655			
B. Slate			655	660			
Lime			660	668			
B. Slate			668	765			
Sand			765	800			
Slate			800	884			
Sand			884	925			
Slate			925	955			
Sand			955	970			
Slate			970	973			
Salt Sand			973	992			
Total Depth			992				

