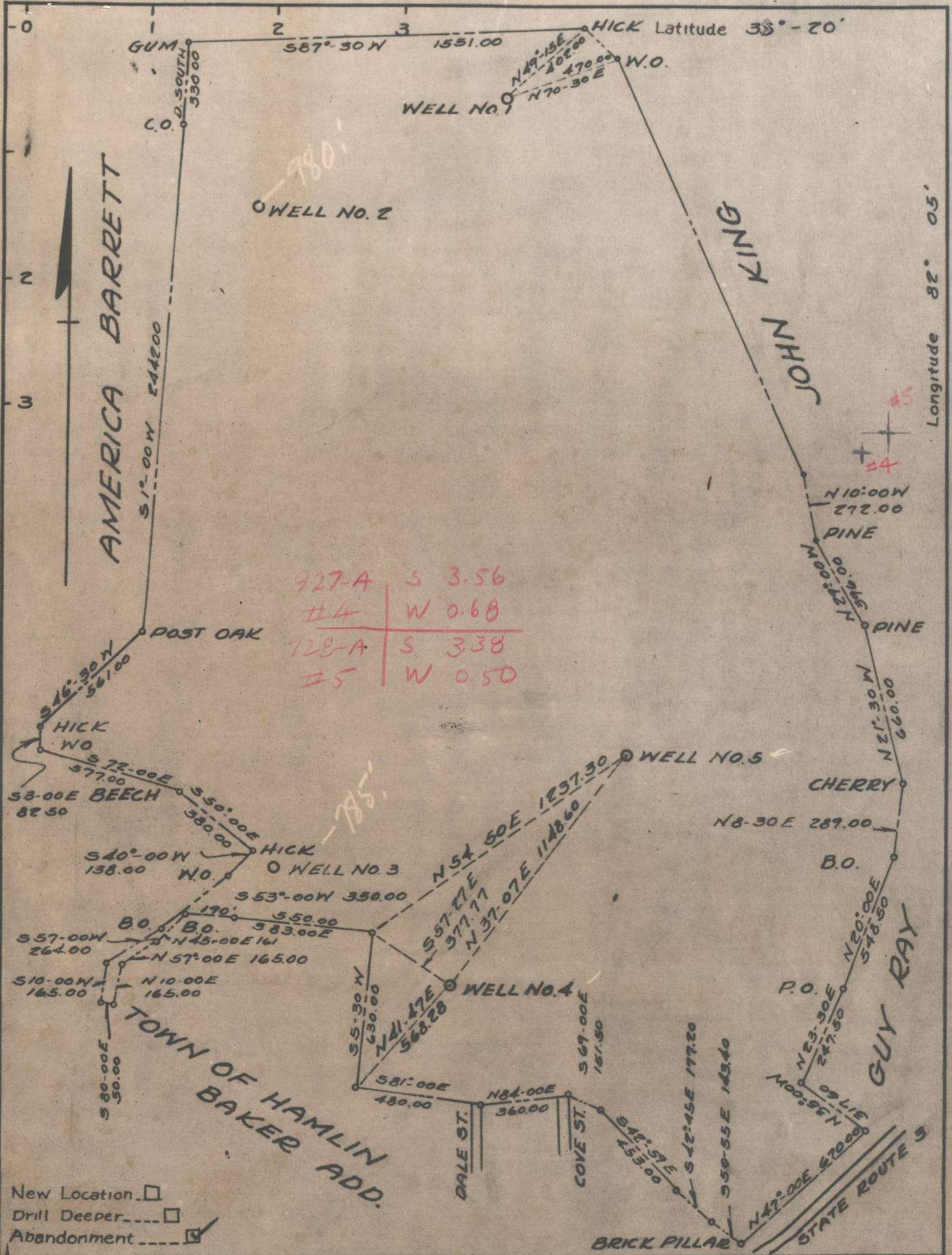


LEWIS STICKLER



Company BAKER ESTATE
 Address HAMLIN W.VA.
 Farm BAKER ESTATE
 Tract 1 Acres 235.5 Lease No. 1
 Well (Farm) No. 1 Serial No. 1
 Elevation (Spirt Level) 990
 Quadrangle MILTON
 County LINCLON District CARROL
 Engineer N. L. SEFTON
 Engineer's Registration No. 1832 *SC*
 File No. _____ Drawing No. _____
 Date 10-5-50 Scale 1" = 500'

STATE OF WEST VIRGINIA
 DEPARTMENT OF MINES
 OIL AND GAS DIVISION
 CHARLESTON

Spotted from Farm Maps

WELL LOCATION MAP
 FILE NO. LIN-927-A#4
LIN-928-A#5

+ Denotes location of well on United States Topographic Maps, scale 1 to 62,500, latitude and longitude lines being represented by border lines as shown.

- Denotes one inch spaces on border line of original tracing



STATE OF WEST VIRGINIA
DEPARTMENT OF MINES
OIL AND GAS DIVISION

1138

Ab 9m-A

WELL RECORD

Oil or Gas Well _____
(KIND)

Permit No. _____

Company Bikins & Jackson - c/o Lloyd G. Jackson
Address Hamlin, W. Va.
Farm W. W. Baker Estate Acres 235.5
Location (waters) Mud River
Well No. 4 Elev. approx 700'
District Carroll County Lincoln
The surface of tract is owned in fee by _____
Address _____
Mineral rights are owned by _____
Address _____
Drilling commenced _____
Drilling completed _____
Date Shot From approx 2150 To _____
With _____
Open Flow /10ths Water in _____ Inch
/10ths Merc. in _____ Inch
Volume _____ Cu. Ft.
Rock Pressure _____ lbs. _____ hrs.
Oil _____ bbls., 1st 24 hrs.
Fresh water _____ feet _____ feet
Salt water Approx 1060 feet _____ feet

Casing and Tubing	Used in Drilling	Left in Well	Packers
Size			Kind of Packer
16			
13			
10			Size of
8 3/4			
6 5/8	Approx.	1000'	Depth set
5 3/16			
3			Perf. top
2			Perf. bottom
Liners Used			Perf. top
			Perf. bottom

CASING CEMENTED _____ SIZE _____ No. Ft. _____ Date _____

COAL WAS ENCOUNTERED AT _____ FEET _____ INCHES
_____ FEET _____ INCHES FEET _____ INCHES
_____ FEET _____ INCHES FEET _____ INCHES

Formation	Color	Hard or Soft	Top	Bottom	Oil, Gas or Water	Depth Found	Remarks
There is no actual log for Well No. 4 -- this log computed from record for Well No. 3 using the difference of 80 feet in elevation.							
Slate, sand and red rock			surface to	772			
Slate			772	615			
Sand			615	930			
Slate			930	935			
Sand			935	1030			
Slate			1030	1040			
Sand			1040	1065			
Slate			1065	1070			
SALT SAND			1070	1130			
Slate			1130	1150			
Sand			1180	1295			
Slate			1295	1323			
Sand - broken			1323	1403			
MAXTON SAND			1403	1516			
Pencil Cave			1516	1534			
BIG LIMB			1534	1714			
Slate			1714	1740			
Injun Sand			1740	1785			
Slate			1785	1790			
Squaw Sand			1790	1805			
Slate & shells			1825	1905			
Shells			1905	2005			
Slate & shells			2005	2125			
BEREA			2125	2150			
Shale			2150	2168			
APPROXIMATE TOTAL DEPTH				2168			

(Over)

FEB 23 1951