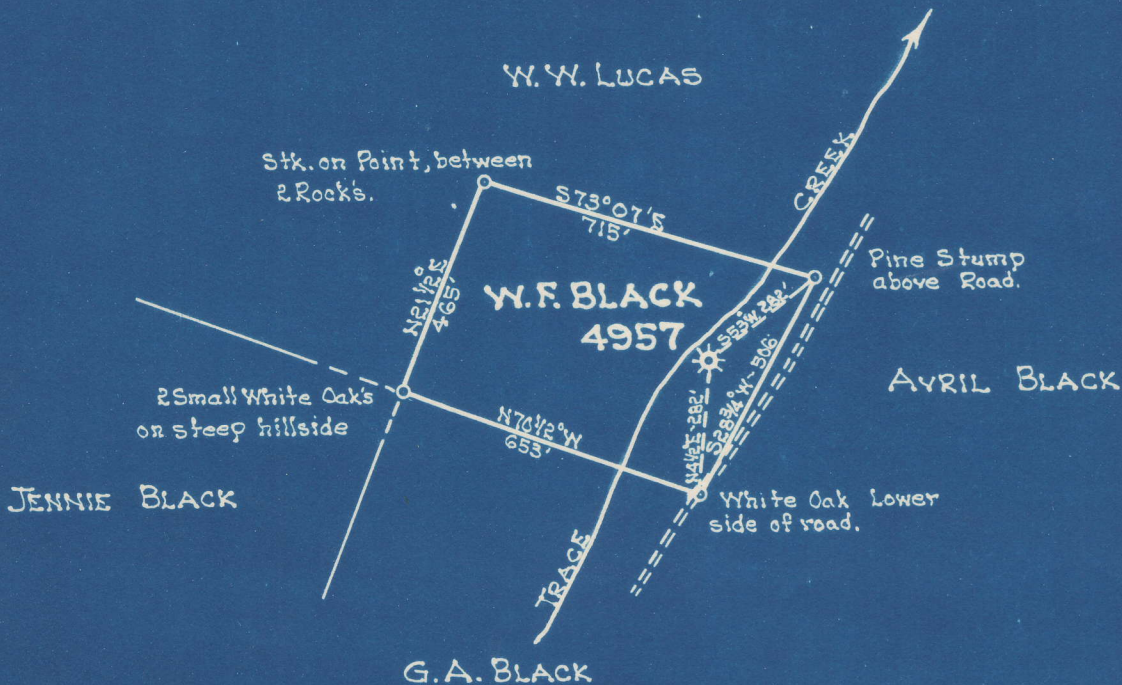


Latitude 33° 15'

Longitude 82° 05'



S 0.79  
W 0.37

New Location..   
 Drill Deeper.....   
 Abandonment.....

Company UNITED FUEL GAS CO.  
 Address CHARLESTON, W.VA.  
 Farm W.F. BLACK  
 Tract \_\_\_\_\_ Acres 12. Lease No. 43398  
 Well (Farm) No. \_\_\_\_\_ Serial No. 4957  
 Elevation (Spirit Level) 733.8  
 Quadrangle MIDKIFF  
 County LINCOLN District CARROLL  
 Engineer [Signature]  
 Engineer's Registration No. 662 NC  
 File No. 36-51 Drawing No. \_\_\_\_\_  
 Date 9-25-50 Scale 1"=400'

STATE OF WEST VIRGINIA  
 DEPARTMENT OF MINES  
 OIL AND GAS DIVISION  
 CHARLESTON

**WELL LOCATION MAP**  
 FILE NO. LIN-916-A

+ Denotes location of well on United States Topographic Maps, scale 1 to 62,500, latitude and longitude lines being represented by border lines as shown.

- Denotes one inch spaces on border line of original tracing.



1141

STATE OF WEST VIRGINIA  
DEPARTMENT OF MINES  
OIL AND GAS DIVISION

WELL RECORD

Permit No. 916-A

Oil or Gas Well Gas  
(KIND)

Company UNITED FUEL GAS COMPANY  
Address Charleston, W. Va.  
Farm W. F. Black Acres 12  
Location (waters) Trace Creek  
Well No. 4957 Elev. 733.8  
District Carroll County Lincoln  
The surface of tract is owned in fee by \_\_\_\_\_  
Address \_\_\_\_\_  
Mineral rights are owned by W. T. Black, etal  
Address Myra, W. Va.  
Drilling commenced October 18, 1924  
Drilling completed December 3, 1924  
Date Shot 12-3-24 From \_\_\_\_\_ To \_\_\_\_\_  
With 50 qts.  
Open Flow /10ths Water in \_\_\_\_\_ Inch  
20 /10ths Merc. in 2 Inch  
Volume 431,040 Cu. Ft.  
Rock Pressure 440 lbs. 48 hrs.  
Oil \_\_\_\_\_ bbls., 1st 24 hrs.  
Fresh water \_\_\_\_\_ feet \_\_\_\_\_ feet  
Salt water \_\_\_\_\_ feet \_\_\_\_\_ feet

Casing and Tubing	Used in Drilling	Left in Well	Packers
Size			Kind of Packer
16			
13			
10	<u>21</u>	<u>21</u>	Size of
8 1/4			
6 5/8	<u>1346</u>	<u>1346</u>	Depth set
5 3/16			
3			Perf. top
2		<u>2086</u>	Perf. bottom
Liners Used			Perf. top
			Perf. bottom

CASING CEMENTED \_\_\_\_\_ SIZE \_\_\_\_\_ No. Ft. \_\_\_\_\_ Date \_\_\_\_\_  
COAL WAS ENCOUNTERED AT 200 FEET 48 INCHES  
\_\_\_\_\_ FEET \_\_\_\_\_ INCHES FEET \_\_\_\_\_ INCHES  
\_\_\_\_\_ FEET \_\_\_\_\_ INCHES FEET \_\_\_\_\_ INCHES

Formation	Color	Hard or Soft	Top	Bottom	Oil, Gas or Water	Depth Found	Remarks
Surface			0	21			
Sand			21	45			
Slate			45	70			
Sand			70	115			
Slate			115	124			
Sand			124	180			
Slate			180	200			
Coal			200	204			
Sand			204	265			
Slate			265	350			
Sand			350	500			
Slate			500	624			
Sand			624	653			
Slate			653	680			
Gas Sand			680	710			
Black Slate			710	750			
Salt Sand			750	1160			
Slate&Shell			1160	1200			
Broken Sand			1200	1255			
Slate			1255	1311			
Little Lime			1311	1341			
Pencil Cave			1341	1346			
Big Lime			1346	1526			
Red Rock			1526	1538			
Keener Sand			1538	1550			
Slate			1550	1562			
Injun Sand			1562	1622			
Slate&Shell			1622	2017			
Brown Shale			2017	2033			
Berea Sand			2033	2052	Gas	2035-2044	
Total Depth				2068			

