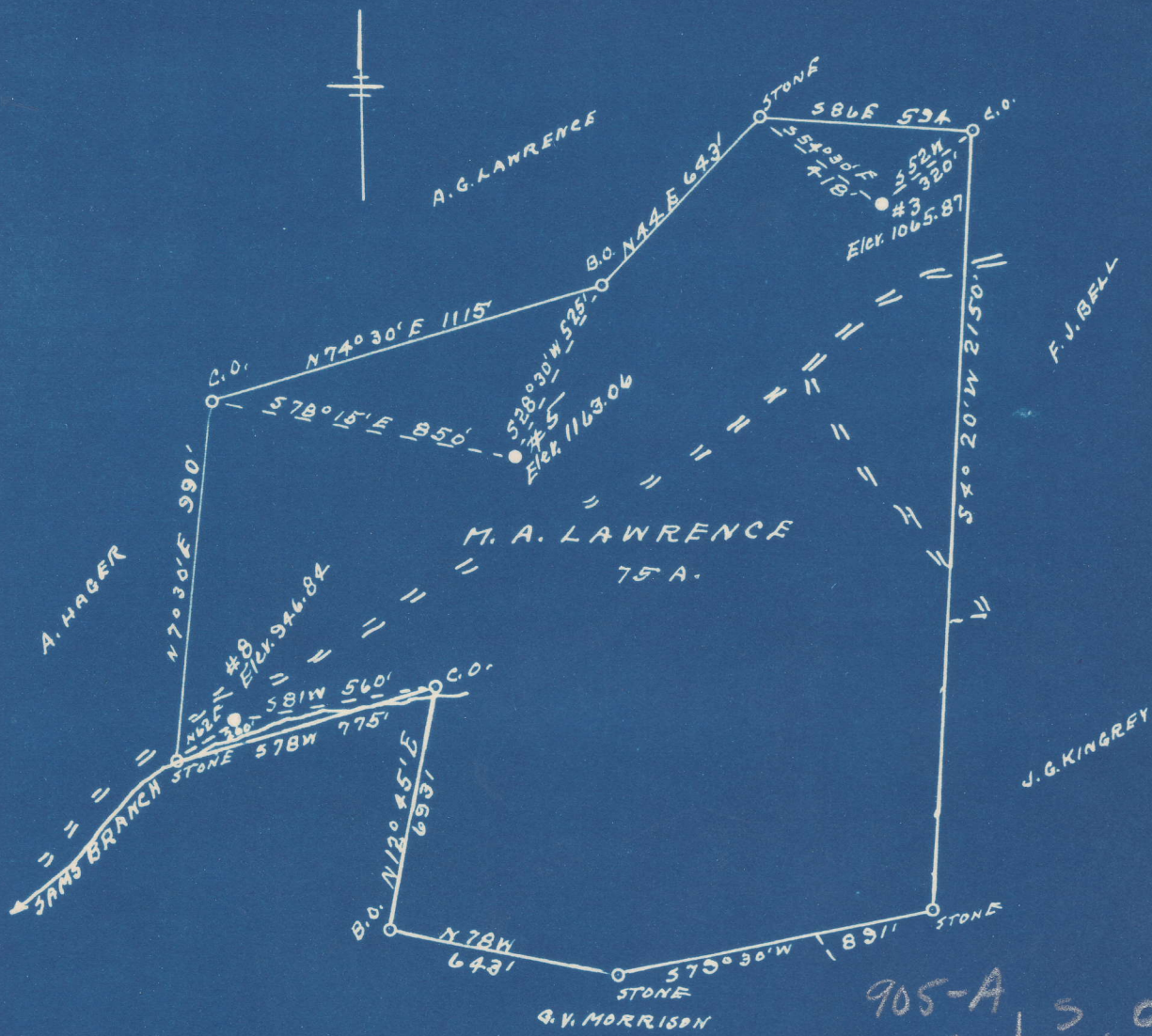


Latitude 38° 15'

Longitude 81° 55'



New Location...   
 Drill Deeper.....   
 Abandonment.....

905-A	S	0.02
#3	W	2.54
906-A	S	0.06
#5	W	2.54
907-A	S	0.07
#8	W	2.62

Company G. S. H. SUPPLY CO.  
 Address TULSA, OKLA.  
 Farm M. A. LAWRENCE  
 Tract \_\_\_\_\_ Acres 75 Lease No. \_\_\_\_\_  
 Well (Farm) No. 5 3-5-8 Serial No. \_\_\_\_\_  
 Elevation (Spirit Level) SEE ABOVE  
 Quadrangle MADISON  
 County LINCOLN District DIVAL  
 Engineer L. F. Dye  
 Engineer's Registration No. 804 *NW*  
 File No. \_\_\_\_\_ Drawing No. \_\_\_\_\_  
 Date 4-25-49 Scale 1" = 500'

STATE OF WEST VIRGINIA  
 DEPARTMENT OF MINES  
 OIL AND GAS DIVISION  
 CHARLESTON

WELL LOCATION MAP  
 LIN - 905-A - #3  
 FILE NO. LIN - 906-A - #5  
 LIN - 907-A - #8

+ Denotes location of well on United States Topographic Maps, scale 1 to 62,500, latitude and longitude lines being represented by border lines as shown.  
 - Denotes one inch spaces on border line of original tracing.

Duval District, Lincoln County, W. Va.  
Big Creek Oil & Dev. Co.  
1½ mi. N. W. of Yawkey.  
Elevation, 1050'.

905A

	Top.	Bottom.	Thickness.
Slate (2 bailers water at 300')	10	- 350	340
Sand	350	- 530	180
Slate and sand	530	- 900	370
Sand	900	- 1230	330
Salt Sand (hole full water, 1295')	1230	- 1815	585
Slate and shells	1815	- 1830	15
Little Lime	1830	- 1875	45
Pencil slate	1875	- 1885	10
Big Lime	1885	- 2058	173
Big Injun Sand	2058	- 2130	72
Slate	2130	- 2200	70
Slate and shell	2200	- 2308	108
Slate	2308	- 2540	232
Brown shale	2540	- 2552	12
Berea Sand (oil)	2552	- 2574	22



STATE OF WEST VIRGINIA  
DEPARTMENT OF MINES  
OIL AND GAS DIVISION

1165

WELL RECORD

Permit No. Pin-905-82 Oil or Gas Well  (KIND)

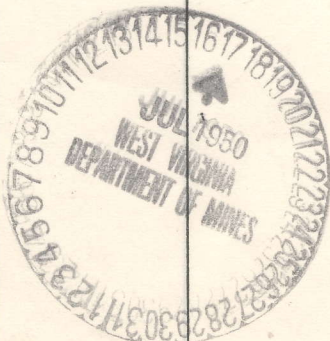
Company G. S. H. Supply Company  
Address c/o Hallie Pack, Hamlin, West Virginia  
Farm M. A. Lawrence Acres 7 1/2  
Location (waters) \_\_\_\_\_  
Well No. 2 Elev. 1065.87  
District Duval County Lincoln  
The surface of tract is owned in fee by \_\_\_\_\_  
Address \_\_\_\_\_  
Mineral rights are owned by \_\_\_\_\_  
Address \_\_\_\_\_  
Drilling commenced \_\_\_\_\_  
Drilling completed \_\_\_\_\_  
Date Shot \_\_\_\_\_ From \_\_\_\_\_ To \_\_\_\_\_  
With \_\_\_\_\_  
Open Flow \_\_\_\_\_ /10ths Water in \_\_\_\_\_ Inch  
\_\_\_\_\_ /10ths Merc. in \_\_\_\_\_ Inch  
Volume \_\_\_\_\_ Cu. Ft.  
Rock Pressure \_\_\_\_\_ lbs. \_\_\_\_\_ hrs.  
Oil \_\_\_\_\_ bbls., 1st 24 hrs.  
Fresh water \_\_\_\_\_ feet \_\_\_\_\_ feet  
Salt water \_\_\_\_\_ feet \_\_\_\_\_ feet

Casing and Tubing	Used in Drilling	Left in Well	Packers
Size			Kind of Packer
16			
13			Size of
10			
8 1/4	1900	1900	Depth set 500
6 1/2	1952	1952	all
5 3/16			Perf. top
3			Perf. bottom
2			Perf. top
Liners Used			Perf. bottom

CASING CEMENTED \_\_\_\_\_ SIZE \_\_\_\_\_ No. Ft. \_\_\_\_\_ Date \_\_\_\_\_

COAL WAS ENCOUNTERED AT \_\_\_\_\_ FEET \_\_\_\_\_ INCHES  
\_\_\_\_\_ FEET \_\_\_\_\_ INCHES FEET \_\_\_\_\_ INCHES  
\_\_\_\_\_ FEET \_\_\_\_\_ INCHES FEET \_\_\_\_\_ INCHES

Formation	Color	Hard or Soft	Top	Bottom	Oil, Gas or Water	Depth Found	Remarks
Salt Sand			1230	1815			
Little Lime			1830	1875			
Pencil Cave			1875	1885			
Big Lime			1885	2058			
Big Injun			2058	2130			
Brown Shale			2540	2552			
Berea Sand			2552	2574			



1900  
5.00  
1400

(Over)

FEB 23 1951