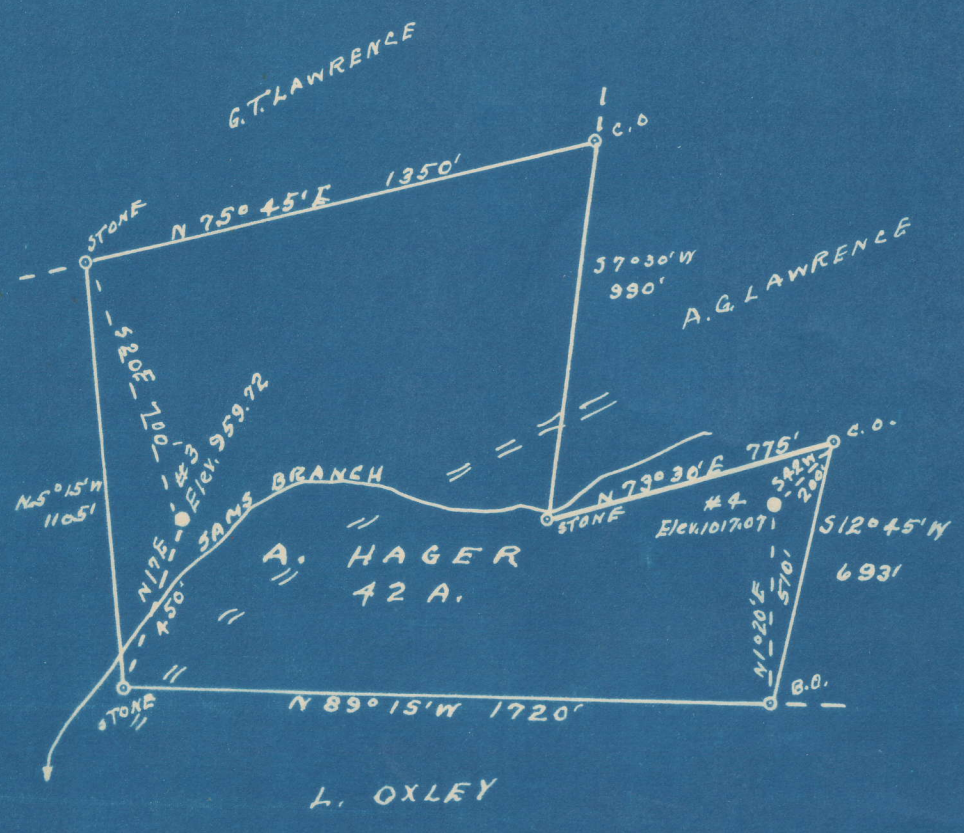


Latitude 38° 15'

Longitude 81° 55'



900-A	S	0.07
#3	W	2.75
901-A	S	0.05
#4	W	2.68

New Location...   
 Drill Deeper.....   
 Abandonment.....

Company G. S. H. SUPPLY CO.  
 Address TULSA, OKLA.  
 Farm A. HAGER  
 Tract \_\_\_\_\_ Acres 42 Lease No. \_\_\_\_\_  
 Well (Farm) No. 5 3-4 Serial No. \_\_\_\_\_  
 Elevation (Spirit Level) SEE ABOVE  
 Quadrangle MADISON  
 County LINCOLN District DUVAL  
 Engineer R. F. Dye  
 Engineer's Registration No. 804  
 File No. \_\_\_\_\_ Drawing No. \_\_\_\_\_  
 Date 3-31-49 Scale 1" = 500'

STATE OF WEST VIRGINIA  
 DEPARTMENT OF MINES  
 OIL AND GAS DIVISION  
 CHARLESTON

**WELL LOCATION MAP**  
 FILE NO. LIN-900-A-3  
LIN-901-A-#4

+ Denotes location of well on United States Topographic Maps, scale 1 to 62,500, latitude and longitude lines being represented by border lines as shown.  
 - Denotes one inch spaces on border line of original tracing.



STATE OF WEST VIRGINIA  
DEPARTMENT OF MINES  
OIL AND GAS DIVISION

(1129) 1129

**WELL RECORD**

Permit No. Am-901-82 Oil or Gas Well X (KIND)

Company G. S. H. Supply Company  
 Address c/o Hallie Pack, Hamlin, West Virginia  
 Farm A. Hager Acres \_\_\_\_\_  
 Location (waters) \_\_\_\_\_  
 Well No. 4 Elev. \_\_\_\_\_  
 District Duval County Lincoln  
 The surface of tract is owned in fee by \_\_\_\_\_  
 Address \_\_\_\_\_  
 Mineral rights are owned by \_\_\_\_\_  
 Address \_\_\_\_\_  
 Drilling commenced \_\_\_\_\_  
 Drilling completed \_\_\_\_\_  
 Date Shot \_\_\_\_\_ From \_\_\_\_\_ To \_\_\_\_\_  
 With \_\_\_\_\_  
 Open Flow \_\_\_\_\_ /10ths Water in \_\_\_\_\_ Inch  
 \_\_\_\_\_ /10ths Merc. in \_\_\_\_\_ Inch  
 Volume \_\_\_\_\_ Cu. Ft.  
 Rock Pressure \_\_\_\_\_ lbs. \_\_\_\_\_ hrs.  
 Oil \_\_\_\_\_ bbls., 1st 24 hrs.  
 Fresh water \_\_\_\_\_ feet \_\_\_\_\_ feet  
 Salt water \_\_\_\_\_ feet \_\_\_\_\_ feet

Casing and Tubing	Used in Drilling	Left in Well	Packers
Size			Kind of Packer
16			
13			
10			Size of
8 1/4			
6 3/8	1825'		Depth set
5 3/16	1792'		
3			Perf. top
2	2508'		Perf. bottom
Liners Used			Perf. top
			Perf. bottom

CASING CEMENTED \_\_\_\_\_ SIZE \_\_\_\_\_ No. Ft. \_\_\_\_\_ Date \_\_\_\_\_  
 COAL WAS ENCOUNTERED AT \_\_\_\_\_ FEET \_\_\_\_\_ INCHES  
 \_\_\_\_\_ FEET \_\_\_\_\_ INCHES FEET \_\_\_\_\_ INCHES  
 \_\_\_\_\_ FEET \_\_\_\_\_ INCHES FEET \_\_\_\_\_ INCHES

Formation	Color	Hard or Soft	Top	Bottom	Oil, Gas or Water	Depth Found	Remarks
Salt Sand			1205	1755			
Little Lime			1775	1810			
Pencil Cave			1810	1820			
Big Lime			1820	1990			
Big Injun			1990	2050			
Brown Shale			2475	2495			
Berea			2495	2514			

