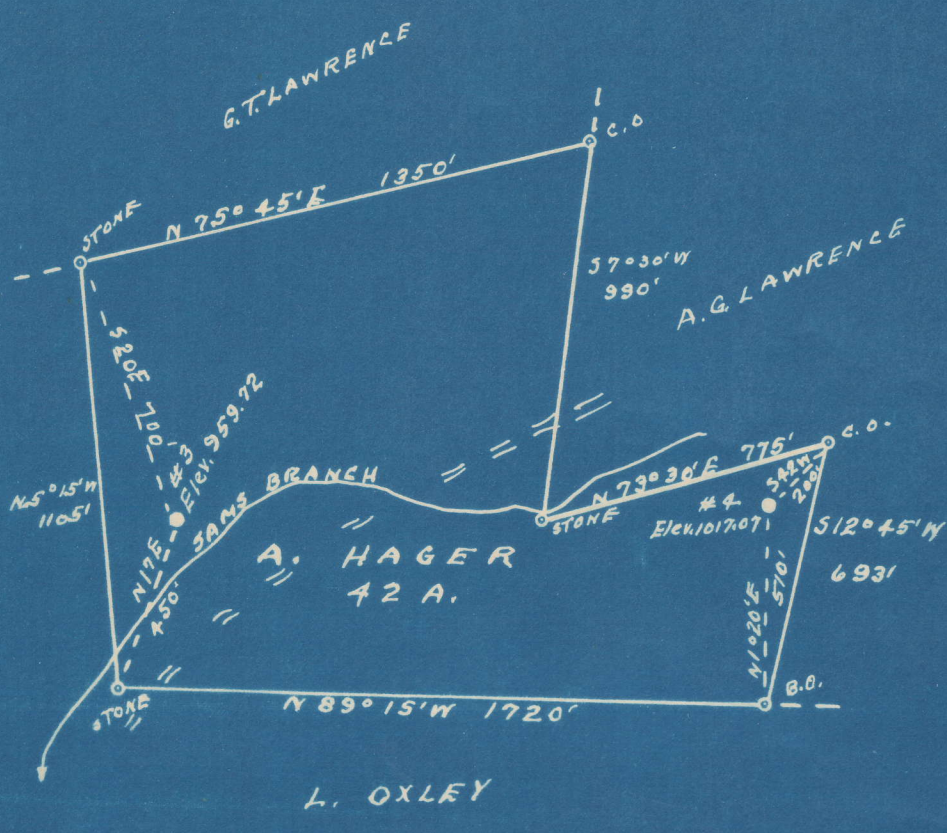


Latitude 38° 15' 1  
 Longitude 81° 55'



900-A	S	0.07
#3	W	2.75
901-A	S	0.05
#4	W	2.68

New Location..   
 Drill Deeper.....   
 Abandonment.....

Company G. S. H. SUPPLY CO.  
 Address TULSA, OKLA.  
 Farm A. HAGER  
 Tract \_\_\_\_\_ Acres 42 Lease No. \_\_\_\_\_  
 Well (Farm) No. S 3-4 Serial No. \_\_\_\_\_  
 Elevation (Spirit Level) SEE ABOVE  
 Quadrangle MADISON  
 County LINCOLN District DUVAL  
 Engineer R. F. Dye  
 Engineer's Registration No. 804  
 File No. \_\_\_\_\_ Drawing No. \_\_\_\_\_  
 Date 3-31-19 Scale 1" = 500'

STATE OF WEST VIRGINIA  
 DEPARTMENT OF MINES  
 OIL AND GAS DIVISION  
 CHARLESTON

**WELL LOCATION MAP**  
 FILE NO. LIN-900-A-3  
LIN-901-A-#4

+ Denotes location of well on United States Topographic Maps, scale 1 to 62,500, latitude and longitude lines being represented by border lines as shown.  
 - Denotes one inch spaces on border line of original tracing.

A. HAGER NO. 3 WELL.

900A

Duval District, Lincoln County, W. Va.

By G. S. H. Supply Co., Tulsa, Okla.

Abandoned under permit Lin-.....-A?

On 42 acres.

Elevation, 959.72' L.

Date of completion, etc., not given.

6 $\frac{5}{8}$ " casing, 1775'; 5 $\frac{3}{16}$ " tubing, 1800'; 2" tubing, 2453'.

Oil well. Record to Dept. of Mines not dated or stamped.

Record to RCT from Mrs. Griffith Nov. 18, 1950. Old File No. 1128.

	Top.	Bottom.
Salt Sand	1095	- 1700
Little Lime	1715	- 1755
Pencil Cave	1755	- 1765
Big Lime	1765	- 1950
Big Injun Sand	1950	- 2015
Brown shale	2420	- 2438
Berea Sand	2438	- 2459
Total depth		2459



STATE OF WEST VIRGINIA  
DEPARTMENT OF MINES  
OIL AND GAS DIVISION

*Lawson*

1128

Permit No. LIN-900A

WELL RECORD

Oil or Gas Well \_\_\_\_\_  
(KIND)

Company G. S. & H. Supply Co.  
 Address Tulsa Okla  
 Farm A. Hager Acres 42  
 Location (waters) \_\_\_\_\_  
 Well No. 3 Elev. 958 72  
 District Duval County Lincoln  
 The surface of tract is owned in fee by \_\_\_\_\_  
 Address \_\_\_\_\_  
 Mineral rights are owned by \_\_\_\_\_  
 Address \_\_\_\_\_

Casing and Tubing	Used in Drilling	Left in Well	Packers
Size			
16			Kind of Packer _____
13			Size of _____
10			Depth set _____
8 1/4	1775	1775	Perf. top _____
6 5/8	1800	1800	Perf. bottom _____
5 3/16			Perf. top _____
3			Perf. bottom _____
2			
Liners Used			

Drilling commenced \_\_\_\_\_  
 Drilling completed \_\_\_\_\_  
 Date Shot \_\_\_\_\_ From \_\_\_\_\_ To \_\_\_\_\_  
 With \_\_\_\_\_  
 Open Flow \_\_\_\_\_ /10ths Water in \_\_\_\_\_ Inch  
 \_\_\_\_\_ /10ths Merc. in \_\_\_\_\_ Inch  
 Volume \_\_\_\_\_ Cu. Ft.  
 Rock Pressure \_\_\_\_\_ lbs. \_\_\_\_\_ hrs.  
 Oil \_\_\_\_\_ bbls., 1st 24 hrs.  
 Fresh water \_\_\_\_\_ feet \_\_\_\_\_ feet  
 Salt water \_\_\_\_\_ feet \_\_\_\_\_ feet

CASING CEMENTED \_\_\_\_\_ SIZE \_\_\_\_\_ No. Ft. \_\_\_\_\_ Date \_\_\_\_\_  
 COAL WAS ENCOUNTERED AT \_\_\_\_\_ FEET \_\_\_\_\_ INCHES  
 \_\_\_\_\_ FEET \_\_\_\_\_ INCHES FEET \_\_\_\_\_ INCHES  
 \_\_\_\_\_ FEET \_\_\_\_\_ INCHES FEET \_\_\_\_\_ INCHES

Formation	Color	Hard or Soft	Top	Bottom	Oil, Gas or Water	Depth Found	Remarks
Salt Sand	1095	1700					
Little Lime	1715	1755					
Pencil Cave	1755	1765					
Big Lime	1765	1950					
Big Injun	1950	2015					
Brown Shale	2420	2438					
Bera Sand	2438	2459					