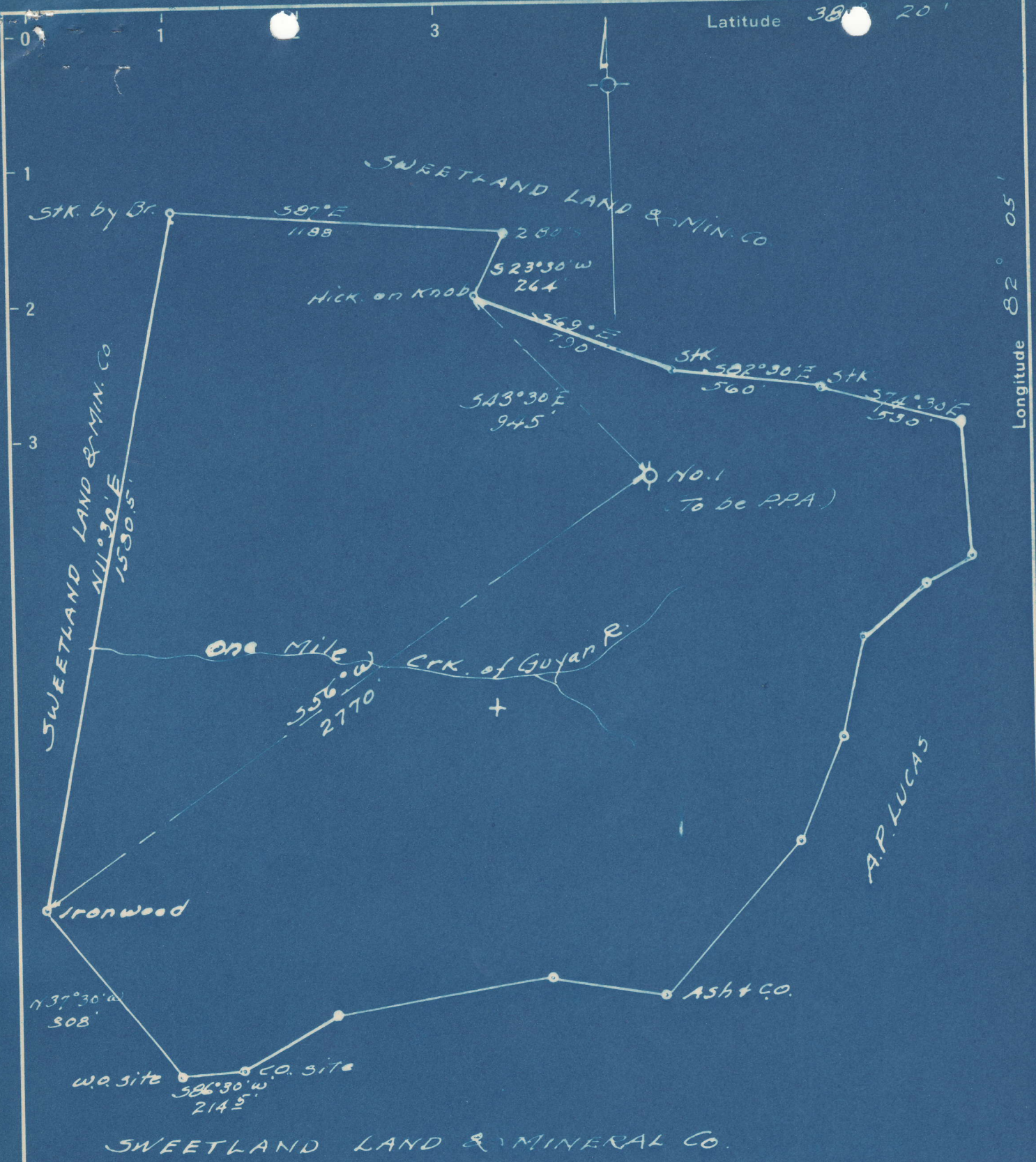


Latitude 38° 20'



5.22 S  
4.01 W

- New Location
- Drill Deeper
- Abandonment

Company Hal. H Dial & Garnet Dial  
 Address Branchland, W. Va.  
 Farm Alice Ferrell  
 Tract \_\_\_\_\_ Acres 164 ± Lease No. \_\_\_\_\_  
 Well (Farm) No. 1 Serial No. \_\_\_\_\_  
 Elevation (Spirit Level) 796  
 Quadrangle Milton  
 County Lincoln District Sheridan  
 Engineer Basile S. Burman SC  
 Engineer's Registration No. 469  
 File No. \_\_\_\_\_ Drawing No. \_\_\_\_\_  
 Date 7-16-49 Scale 1" = 500'

STATE OF WEST VIRGINIA  
 DEPARTMENT OF MINES  
 OIL AND GAS DIVISION  
 CHARLESTON

WELL LOCATION MAP  
 FILE NO. LIN-821-A

+ Denotes location of well on United States Topographic Maps, scale 1 to 62,500, latitude and longitude lines being represented by border lines as shown.  
 - Denotes one inch spaces on border line of original tracing.

821A
 ALICE FERRELL NO. 1 WELL.

Sheridan District, Lincoln County, W. Va.  
 By Hal H. Dial, Branchland, W. Va.  
 Abandoned under permit Lin-.....-A?  
 On 140 acres, on Onemile Creek.  
 Elevation, 796' L.

Surface and minerals owned by Alice Ferrell, Branchland, W. Va.  
 Drilling commenced and completed in 1926.  
 10" casing, 22'; 8 $\frac{1}{4}$ "", 312' (pulled); 6 $\frac{5}{8}$ "", 1705'; 2" tubing, 2246'.  
 Heeter packer set at ~~1705'~~.....?

Perf. top, 2176'.  
 Gas well. Record to Dept. of Mines not dated or stamped.  
 Record to RCT from Mrs. Griffith Jan. 20, 1950. Old File No. 1082.  
 "This well record is missing, so all formations are from the record  
 of well No. 3, app. 1600 ft. away and 12 ft. difference in  
 elevation."

(no. 3 is 859A)

|   | Top. | Bottom.       |
|---|------|---------------|
| Surface   | 0    | 6             |
| Slate   | 6    | 16            |
| Slate, black                                    | 16   | 80            |
| Sand  | 80   | 130           |
| Slate   | 130  | 315           |
| Sand  | 315  | 500           |
| Slate   | 500  | 540           |
| Sand  | 540  | 560           |
| Slate   | 560  | 590           |
| Sand  | 590  | 625           |
| Slate   | 615  | 630           |
| Sand  | 630  | 640           |
| Slate   | 640  | 680           |
| Sand  | 680  | 710           |
| Slate   | 710  | 860           |
| Salt Sand (big water, 870')                     | 860  | 1040          |
| Slate   | 1040 | 1100          |
| Sand  | 1100 | 1210          |
| Slate   | 1210 | 1230          |
| Red rock  | 1230 | 1240          |
| Slate   | 1240 | 1300          |
| Sandy lime                                      | 1300 | 1325          |
| Red rock  | 1325 | 1333          |
| Maxton Sand                                     | 1333 | 1370          |
| Little Lime (showing gas)                       | 1370 | 1410          |
| Big Lime (show gas, 1510')                      | 1410 | 1593          |
| Red lime  | 1593 | 1600          |
| Big Injun Sand (water, 1605') (show gas, 1610') | 1600 | 1669          |
| Lime shells                                     | 1669 | 1691          |
| Slate   | 1691 | 2148          |
| Brown shale                                     | 2148 | 2160          |
| Berea Sand                                      | 2160 | 2177          |
| Slate   | 2177 | .....         |
| Total depth (filled?)                           |      | 2140? (2177?) |



1082

STATE OF WEST VIRGINIA  
DEPARTMENT OF MINES  
OIL AND GAS DIVISION

WELL RECORD

Permit No. 821-A

Oil or Gas Well \_\_\_\_\_  
(KIND)

Company Hal H. Dixl  
Address Branchland, W. Va.  
Farm Alice Ferrell Acres 140  
Location (waters) one mile creek  
Well No. 974 Elev. 796  
District Sheridan County Lincoln  
The surface of tract is owned in fee by Alice Ferrell  
Address Branchland

| Casing and Tubing | Used in Drilling | Left in Well | Packers               |
|-------------------|------------------|--------------|-----------------------|
| Size              |                  |              |                       |
| 16                |                  |              | Kind of Packer        |
| 13                |                  |              | <u>Heater</u>         |
| 10                | <u>22</u>        | <u>22</u>    | Size of               |
| 8 1/4             | <u>312</u>       | <u>NONE</u>  |                       |
| 6 5/8             | <u>1705</u>      | <u>1705</u>  | Depth set <u>276</u>  |
| 5 3/16            |                  |              |                       |
| 3                 |                  |              | Perf. top <u>2176</u> |
| 2                 | <u>2246</u>      | <u>2246</u>  | Perf. bottom          |
| Liners Used       |                  |              | Perf. top             |
|                   |                  |              | Perf. bottom          |

Mineral rights are owned by Alice Ferrell  
Address Branchland  
Drilling commenced 1926  
Drilling completed 1926  
Date Shot From To  
With  
Open Flow /10ths Water in \_\_\_\_\_ Inch  
/10ths Merc. in \_\_\_\_\_ Inch  
Volume \_\_\_\_\_ Cu. Ft.  
Rock Pressure \_\_\_\_\_ lbs. \_\_\_\_\_ hrs.  
Oil \_\_\_\_\_ bbls., 1st 24 hrs.  
Fresh water \_\_\_\_\_ feet \_\_\_\_\_ feet  
Salt water \_\_\_\_\_ feet \_\_\_\_\_ feet

CASING CEMENTED \_\_\_\_\_ SIZE \_\_\_\_\_ No. Ft. \_\_\_\_\_ Date \_\_\_\_\_  
COAL WAS ENCOUNTERED AT \_\_\_\_\_ FEET \_\_\_\_\_ INCHES  
\_\_\_\_\_ FEET \_\_\_\_\_ INCHES \_\_\_\_\_ FEET \_\_\_\_\_ INCHES  
\_\_\_\_\_ FEET \_\_\_\_\_ INCHES \_\_\_\_\_ FEET \_\_\_\_\_ INCHES

| Formation  | Color | Hard or Soft | Top | Bottom | Oil, Gas or Water | Depth Found | Remarks |
|--|-------|--------------|-----|--------|-------------------|-------------|---------|
| <i>This well record is missing so all formations are from the record of well #3 app. 1600 ft away and 12 ft difference in elevation.</i> |       |              |     |        |                   |             |         |
| Surface  |       |              | 0   | 6      |                   |             |         |
| Slate  |       |              | 6   | 16     |                   |             |         |
| Slate  | black |              | 16  | 80     |                   |             |         |
| Sand   |       |              | 80  | 130    |                   |             |         |
| Slate  |       |              | 130 | 315    |                   |             |         |
| Sand   |       |              | 315 | 500    |                   |             |         |
| Slate  |       |              | 500 | 540    |                   |             |         |
| Sand   |       |              | 540 | 560    |                   |             |         |
| Slate  |       |              | 560 | 590    |                   |             |         |
| Sand   |       |              | 590 | 615    |                   |             |         |
| Slate  |       |              | 615 | 630    |                   |             |         |
| Sand   |       |              | 630 | 640    |                   |             |         |
| Slate  |       |              | 640 | 680    |                   |             |         |
| Sand   |       |              | 680 | 710    |                   |             |         |
| Slate  |       |              | 710 | 860    |                   |             |         |
| Sand   |       | Salt         | 860 | 1040   | Big water at 870  |             |         |

| Formation   | Color | Hard or Soft | Top  | Bottom | Oil, Gas or Water | Depth Found | Remarks |
|-------------|-------|--------------|------|--------|-------------------|-------------|---------|
| Slate       |       |              | 1040 | 1100   |                   |             |         |
| Sand        |       |              | 1100 | 1210   |                   |             |         |
| Slate       |       |              | 1210 | 1230   |                   |             |         |
| Red Rock    |       |              | 1230 | 1240   |                   |             |         |
| Slate       |       |              | 1240 | 1300   |                   |             |         |
| Sandy Lime  |       |              | 1300 | 1325   |                   |             |         |
| Red Rock    |       |              | 1325 | 1333   |                   |             |         |
| Mastox      |       |              | 1333 | 1370   |                   |             |         |
| Little Lime |       |              | 1370 | 1410   | Show gas          | 1510        |         |
| Big Lime    |       |              | 1410 | 1593   |                   |             |         |
| Red "       |       |              | 1593 | 1600   |                   |             |         |
| Big Injun   |       |              | 1600 | 1669   | water             | 1605        |         |
| Lime Shells |       |              | 1669 | 1691   | Show gas          | 1610        |         |
| Slate       |       |              | 1691 | 2148   |                   |             |         |
| Brown Shale |       |              | 2148 | 2160   |                   |             |         |
| Berea Sand  |       |              | 2160 | 2177   |                   |             |         |
| Slate       |       |              | 2177 |        |                   |             |         |
| Total depth |       |              | 2140 |        |                   |             |         |

Date \_\_\_\_\_, 19\_\_\_\_

APPROVED \_\_\_\_\_, Owner

By \_\_\_\_\_

(Title)