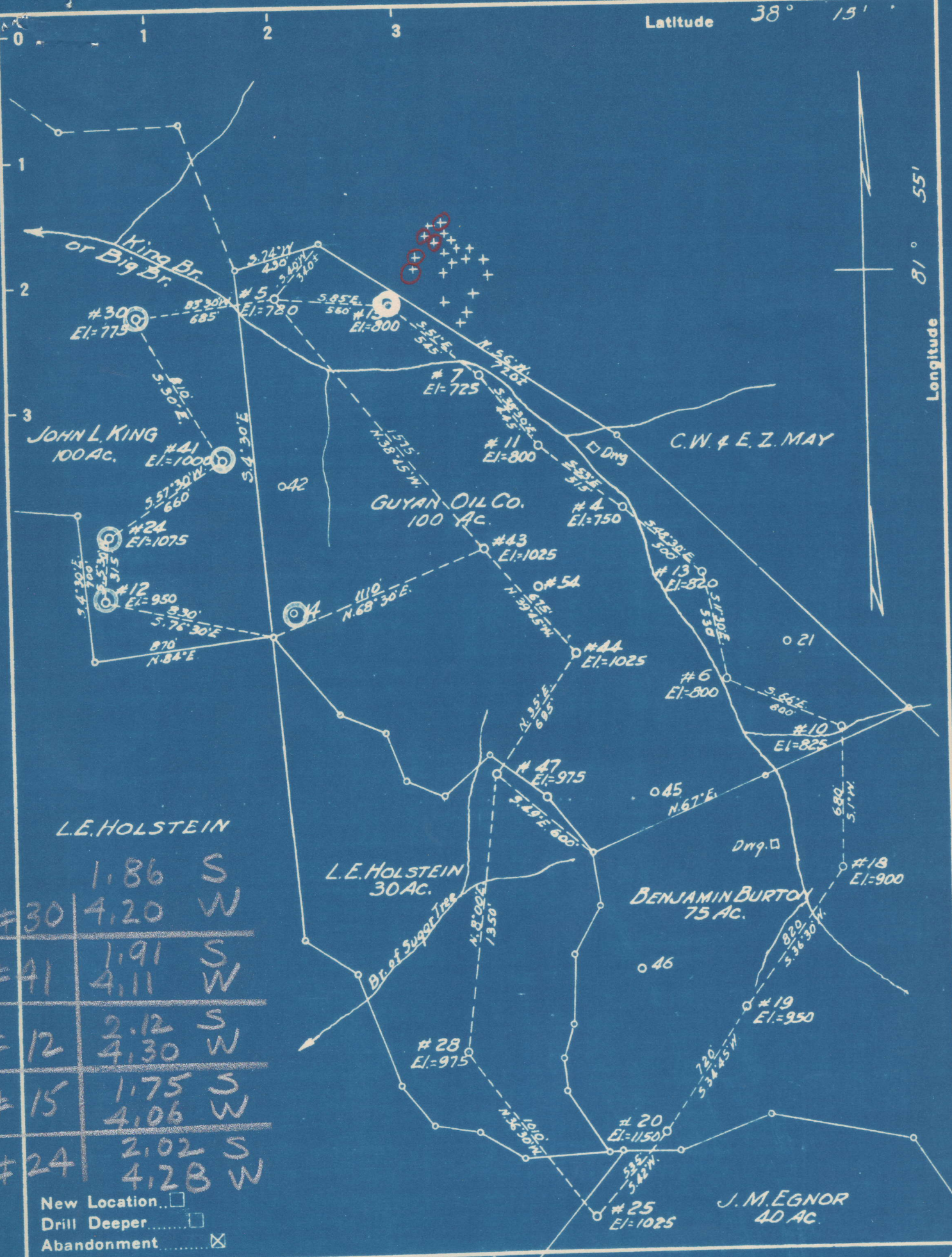


Latitude 38° 15'

Longitude 81° 55'



#30	1.86 S	4.20 W
#41	1.91 S	4.11 W
#12	2.12 S	4.30 W
#15	1.75 S	4.06 W
#24	2.02 S	4.28 W

New Location
 Drill Deeper
 Abandonment

Company WILHELM DRILLING CO.
 Address HAMLIN, W.VA.
 Farm GUYAN OIL CO. & AS NOTED
 Tract _____ Acres 345 Lease No. _____
 Well (Farm) No. _____ Serial No. _____
 Elevation (Spirit Level) AS NOTED
 Quadrangle MADISON
 County LINCOLN District DUALS & UNION
 Engineer G. E. Ewing
 Engineer's Registration No. 309
 File No. _____ Drawing No. _____
 Date 11-20-48 Scale 1"=600'

STATE OF WEST VIRGINIA
 DEPARTMENT OF MINES
 OIL AND GAS DIVISION
 CHARLESTON

WELL LOCATION MAP
 LIN-704-A-#30
 FILE NO. LIN-705-A-#41
 LIN-751-A-24 LIN-713-A-#12
 LIN-751-A-#15

+ Denotes location of well on United States Topographic Maps, scale 1 to 62,500, latitude and longitude lines being represented by border lines as shown.

- Denotes one inch spaces on border line of original tracing.

Duval District, Lincoln County, W. Va.

By Guyan Oil Co. (CWL)

Elevation, 1114' L.

Record of Guyan Oil Co. Well No. 24, Lincoln Land Association,
on property of J. L. KING, on Big Branch of Sugartree.

Copied from record books of Columbia Elec. & Gas Co., by C. E.
Krebs, Feb. 22, 1912.

Well completed Jan. 19, 1909.

20-bbl. oil well.

752A

on plot 24A

	Top.	Bottom.
Coal	720	724
Salt Sand	1160	1765
Little Lime	1853	1877
Pencil Cave	1877	1885
Big Lime	1866	2070
Big Injun Sand	2070	2115
Berea Sand (oil; 20 bbls.)	2574	2596
Total depth		2602