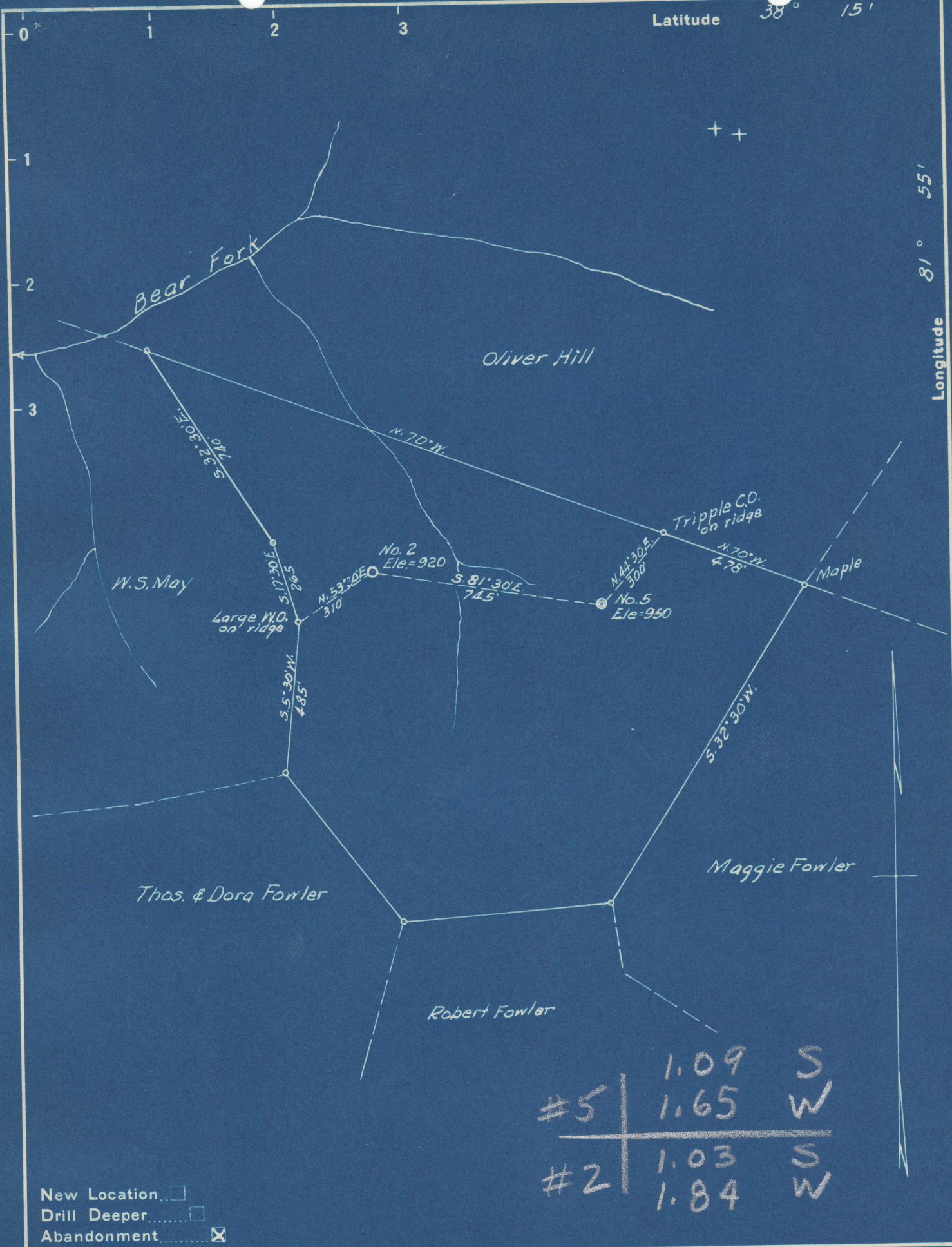


Latitude 38° 15'

Longitude 81° 55'



New Location   
 Drill Deeper   
 Abandonment

#5	1.09	S
	1.65	W
#2	1.03	S
	1.84	W

Company C. R. DELAY  
 Address HAMLIN, W. VA.  
 Farm THOMAS COOPER  
 Tract \_\_\_\_\_ Acres 50 Lease No. \_\_\_\_\_  
 Well (Farm) No. 2 & 5 Serial No. \_\_\_\_\_  
 Elevation (Spirit Level) AS NOTED **NW**  
 Quadrangle MADISON  
 County LINCOLN District DUVAL  
 Engineer S. C. Ewing  
 Engineer's Registration No. 309  
 File No. \_\_\_\_\_ Drawing No. \_\_\_\_\_  
 Date 12-31-48 Scale 1" = 400'

STATE OF WEST VIRGINIA  
 DEPARTMENT OF MINES  
 OIL AND GAS DIVISION  
 CHARLESTON

**WELL LOCATION MAP**  
 FILE NO. LIN-609-A-#5  
LIN-647-A-#2

+ Denotes location of well on United States Topographic Maps, scale 1 to 62,500, latitude and longitude lines being represented by border lines as shown.

- Denotes one inch spaces on border line of original tracing.



TOM COOPER NO. 2 WELL.

No. 89 O.F.-Lincoln.  
No. L-101 CWL p.....

Duval District, Lincoln County, W. Va.  
Big Creek Development Co.  
1 mile N. E. of Yawkey.  
Elevation, 840'.

647A

or plot  
609A

	Top.	Bottom.	Thickness.
Soil	0 -	14	14
Slate	14 -	90	76
Sand	90 -	225	135
Slate	225 -	250	25
Sand	250 -	495	245
Slate	495 -	515	20
Sand	515 -	700	185
Slate	700 -	740	40
Sand	740 -	800	60
Slate	800 -	830	30
Sand	830 -	910	80
Slate	910 -	960	50
Salt Sand (hole full water at 1050')	960 -	1610	650
Slate	1610 -	1630	20
Black lime	1630 -	1664	34
Pencil	1664 -	1668	4
Big Lime	1668 -	1850	182
Big Injun Sand	1850 -	1930	80
Slate and shell	1930 -	2335	405
Brown shale	2335 -	2355	20
Berea Sand (oil)	2355 -	2377	22
Slate	2377 -	2378	1



Thomas Cooper 2  
HAS COOKE NO. 2 WELL.

70034

Duval District, Lincoln County, W. Va.

#101 w 1913 Co. Rept.

By South Penn Natural Gas Co., Parkersburg, W. Va.

Abandoned under permit Lin-.....-A?

On.....acres.

NO PERMIT NR.

now: 043

647A

Elevation, ...85.....' L.

Drilling commenced Aug. 12,,1909; completed Sept. 23, 1909.

6 3/8" casing, 1678'; 2" tubing, 2369'; all left in.

Oil well. Record to Dept. of Mines stamped Jan. 10, 1949.

Record to RCT from Mrs. Griffith April 18, 1949. Old File No. 831.

	Top.	Bottom.
Salt Sand	960	- 1610
Little Lime	1630	- 1664
Pencil Cave	1664	- 1668
Big Lime	1668	- 1850
Big Injun Sand	1850	- 1930
Brown shale	2335	- 2355
Berea Sand	2355	- 2377
Total depth		2377