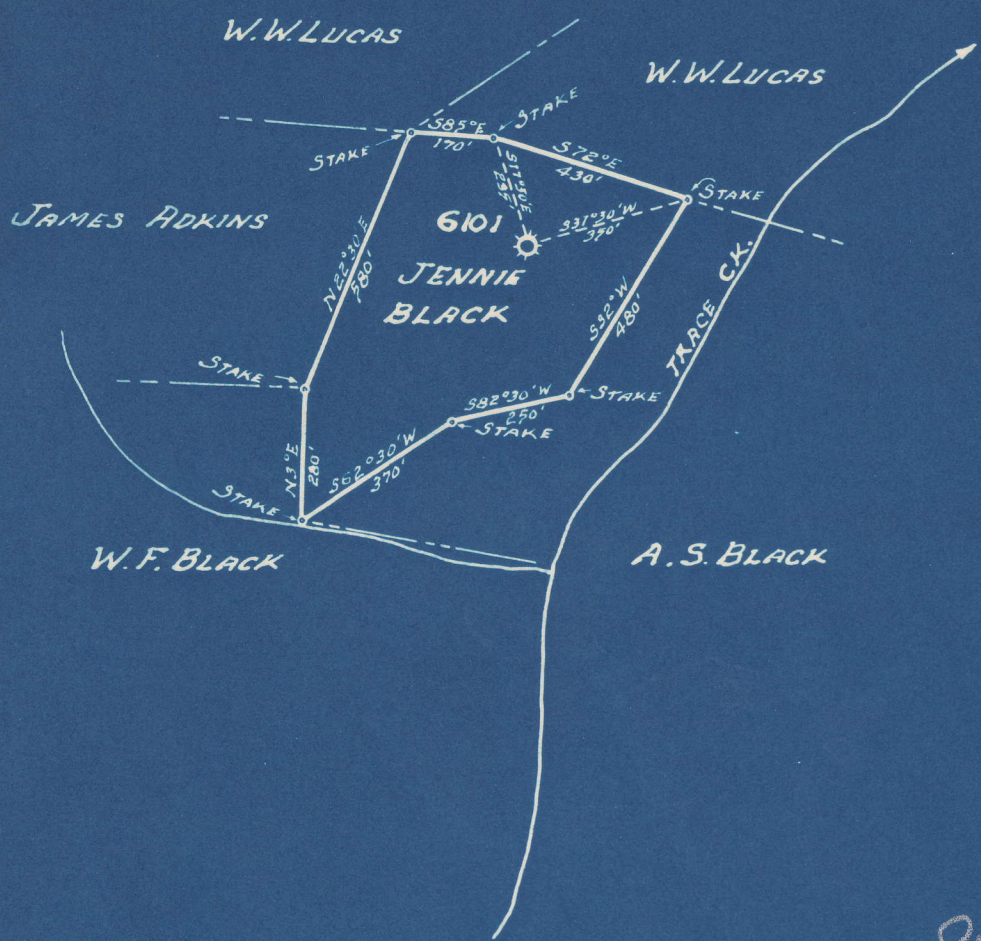


Latitude 38° 15'

Longitude 82° 05'



0.71 S  
0.52 W

- New Location
- Drill Deeper
- Abandonment

Company UNITED FUEL GAS CO.  
 Address CHARLESTON, WVA.  
 Farm UNITED FUEL GAS CO. MINERAL  
 Tract 32 Acres 155.8 Lease No. \_\_\_\_\_  
 Well (Farm) No. 1 Serial No. 6101  
 Elevation (Spirit Level) 942.3  
 Quadrangle MIDKIFF **NC**  
 County LINCOLN District CARROLL  
 Engineer J.H. Moore  
 Engineer's Registration No. 662  
 File No. 36-51 Drawing No. \_\_\_\_\_  
 Date 12-1-48 Scale 1"=400'

STATE OF WEST VIRGINIA  
 DEPARTMENT OF MINES  
 OIL AND GAS DIVISION  
 CHARLESTON

**WELL LOCATION MAP**  
 FILE NO. LIN-547-A

- + Denotes location of well on United States Topographic Maps, scale 1 to 62,500, latitude and longitude lines being represented by border lines as shown.
- Denotes one inch spaces on border line of original tracing.

UNITED FUEL GAS CO. (MIN. TR. NO. 32) NO. 6101 WELL.

547A

Carroll District, Lincoln County, W. Va.  
 By United Fuel Gas Co., Box 2137, Charleston, 25, W. Va.  
 Abandoned under permit Lin-.....-A?  
 On 155.8 acres, on Trace Creek.  
 Elevation, 942.3' L.  
 Minerals owned by United Fuel Gas Co., Box 1273, Charleston, 25, W. Va.  
 Drilling completed Jan. 4, 1923.  
 Date of shot, not given.  
 Volume, 140,000 cu. ft.  
 Rock pressure, 500 lbs., in 24 hrs.  
 10" casing, 21'; 8 $\frac{1}{4}$ ", 305'; 6 $\frac{5}{8}$ ", 1578'; 2" tubing, 2280'.  
 Gas well. Abandonment reported to Dept. of Mines Nov. 26, 1948.  
 Record to RCT from Mrs. Griffith Jan. 22, 1949. Old File No. 796.

	Top.	Bottom.
Surface, gravel	0	20
Slate	20	200
Sand	200	235
Slate	235	315
Sand	315	425
Slate	425	500
Sand	500	560
Slate and shells	560	770
Sand	770	830
Slate	830	960
Salt Sand	960	1425
Lime and shells	1425	1460
Red rock	1460	1475
Slate and shells	1475	1520
Lime	1520	1578
Bottom of Big Lime	....	1729
Red rock	1729	1744
Big Injun Sand	1744	1800
Slate and shells	1800	....
Slate shells	1800	2100
Slate	2100	2215
Brown shale	2215	2234
Berea Sand (gas)	2234	2256
Lime shells	2256	2280
Total depth		2280



STATE OF WEST VIRGINIA  
DEPARTMENT OF MINES  
OIL AND GAS DIVISION

796

WELL RECORD  
ABANDONMENT

Permit No. Ab 577-A

Oil or Gas Well Gas  
(KIND)

Company UNITED FUEL GAS CO.  
Address P.O. Box 1273, Charleston 25, W. Va.  
Farm U.F.G. Co. Min. Tr. #32 Acres 155.8  
Location (waters) Trace Cr.  
Well No. 6101 Elev. 942.3 L  
District Carroll County Lincoln  
The surface of tract is owned in fee by \_\_\_\_\_  
Address \_\_\_\_\_  
Mineral rights are owned by UNITED FUEL GAS CO.  
P.O. Box 1273, Address Chas. 25, W. Va.  
Drilling commenced Not Given  
Drilling completed 1-4-23  
Date Shot Not Given From \_\_\_\_\_ To \_\_\_\_\_  
With \_\_\_\_\_  
Open Flow /10ths Water in Not Given Inch  
/10ths Merc. in \_\_\_\_\_ Inch  
Volume 140 M Cu. Ft.  
Rock Pressure 500 lbs. 24 hrs.  
Oil \_\_\_\_\_ bbls., 1st 24 hrs.  
Fresh water \_\_\_\_\_ feet  
Salt water \_\_\_\_\_ feet

Casing and Tubing	Used in Drilling	Left in Well	Packers
Size			
16			Kind of Packer
13			
10	<u>21</u>	<u>21</u>	Size of <u>Left</u>
8 1/4	<u>305</u>	<u>305</u>	<u>New</u>
6 5/8	<u>1578</u>	<u>1578</u>	Depth set <u>1345</u>
5 3/16			
3			Perf. top
<u>2 Tubing</u>		<u>2280</u>	Perf. bottom <u>all</u>
Liners Used			Perf. top
			Perf. bottom

CASING CEMENTED \_\_\_\_\_ SIZE \_\_\_\_\_ No. Ft. \_\_\_\_\_ Date \_\_\_\_\_

COAL WAS ENCOUNTERED AT \_\_\_\_\_ FEET \_\_\_\_\_ INCHES  
\_\_\_\_\_ FEET \_\_\_\_\_ INCHES FEET \_\_\_\_\_ INCHES  
\_\_\_\_\_ FEET \_\_\_\_\_ INCHES FEET \_\_\_\_\_ INCHES

Formation	Color	Hard or Soft	Top	Bottom	Oil, Gas or Water	Depth Found	Remarks
Surface, gravel			0	20	Gas from Berea		
Slate			20	200			
Sand			200	235			
Slate			235	315			
Sand			315	425			
Slate			425	500			
Sand			500	560			
Slate & shells			560	770			
Sand			770	830			
Slate			830	960			
Salt sand			960	1425			
Lime & shells			1425	1460			
Red rock			1460	1475			
Slate & shells			1475	1520			
Lime			1520	1578			
Bot. Big Lime			1729				
Red Rock			1729	1744			
Big Injun			1744	1800			
Slate & shells			1800				
Slate shells			1800	2100			
Slate			2100	2215			
Brown shale			2215	2234			
Berea Sand			2234	2256			
Lime shells			2256	2280			
Total Depth			2280'				

