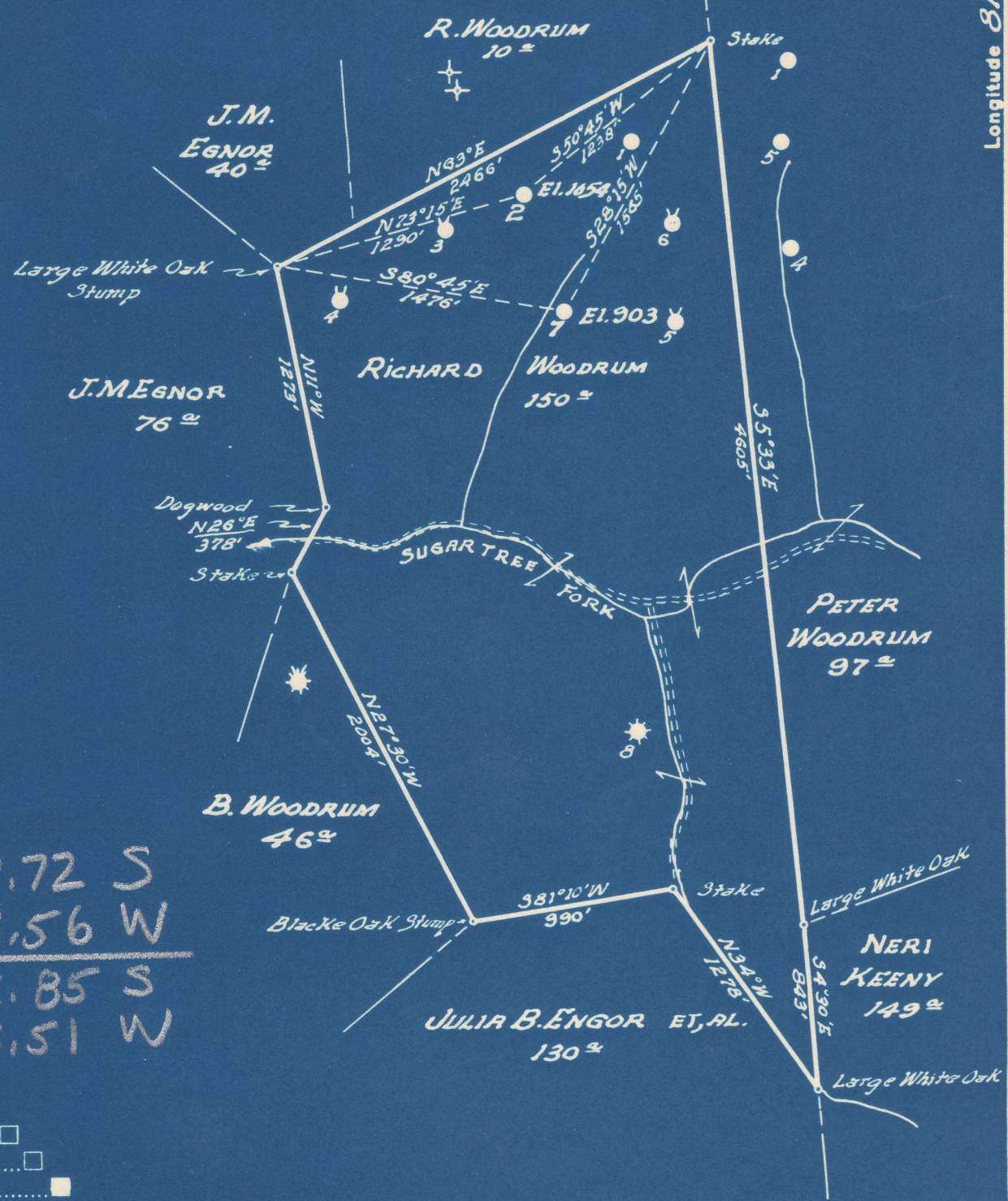


Latitude 38° 15'

Longitude 81° 55'



#2	2.72 S
	3.56 W
#7	2.85 S
	3.51 W

New Location   
 Drill Deeper   
 Abandonment

Company UNITED FUEL GAS CO.  
 Address CHARLESTON, W.VA.  
 Farm RICHARD WOODRUM  
 Tract 1 Acres 150 Lease No. 71082  
 Well (Farm) No. 247 Serial No. F9514  
 Elevation (Spirit Level) 2-1054, 7-903  
 Quadrangle MADISON  
 County LINCOLN District UNION NW  
 Engineer J.H. Moore  
 Engineer's Registration No. 662  
 File No. 42-49 Drawing No. \_\_\_\_\_  
 Date 10-26-48 Scale 1"=800'

STATE OF WEST VIRGINIA  
 DEPARTMENT OF MINES  
 OIL AND GAS DIVISION  
 CHARLESTON

WELL LOCATION MAP  
 FILE NO. LIN-537-A-#1  
LIN-538-A-#7

+ Denotes location of well on United States Topographic Maps, scale 1 to 62,500, latitude and longitude lines being represented by border lines as shown.  
 - Denotes one inch spaces on border line of original tracing.

RICHARD WOODRUM NO. 2 WELL.

537A

Union District, Lincoln County, W. Va.  
By United Fuel Gas Co., Box 1273, Charleston, 25, W. Va.  
Abandoned under permit Lin-.....-A?  
On 150 acres, on Sugartree Fork.  
Elevation, 1054' L.  
Minerals owned by R. H. Woodrum et al., Alkol, W. Va.  
Drilling commenced July 19, 1909; completed Sept. 8, 1909.  
Shot, date not given.  
6<sup>5</sup>/<sub>8</sub>" casing, 1830'; 2" tubing, 2514'; all left in.  
Oil well. Abandonment reported to Dept. of Mines Nov. 15, 1948.  
Record to RCT from Mrs. Griffith July 10, 1949. Old File No. 951.

	Top.	Bottom.
Salt Sand	1100	- 1730
Little Lime	1790	- 1820
Pencil Cave	1820	- 1825
Big Lime	1825	- 2010
Big Injun Sand	2020	- 2060
Brown shale	2477	- 2497
Berea Sand	2497	- 2520
Total depth		2520

Union District, Lincoln County, W. Va.  
Big Creek Development Co.  
1/2 mile south of Amy.  
Elevation, 990'.

Do 1852 a Map,

	Top.	Bottom.	Thickness.
Soil and clay	0 -	15	15
Slate	15 -	55	40
Sand	55 -	105	50
Slate	105 -	150	45
Sand	150 -	300	150
Coal	300 -	302	2
Slate	302 -	500	198
Sand (water at 600')	500 -	750	250
Slate	750 -	1100	350
Salt Sand (8 bailers water at 1160') (hole full of water at 1190')	1100 -	1730	630
Red rock	1730 -	1745	15
Maxton Sand	1745 -	1780	35
Slate	1780 -	1790	10
Little Lime	1790 -	1820	30
Pencil Cave	1820 -	1825	5
Big Lime	1825 -	2010	185
Red rock	2010 -	2020	10
Big Injun Sand	2020 -	2060	40
Slate	2060 -	2120	60
Lime shells	2120 -	2270	150
Slate	2270 -	2477	207
Black slate	2477 -	2497	20
Berea Sand (oil)	2497 -	2520	23



STATE OF WEST VIRGINIA  
DEPARTMENT OF MINES  
OIL AND GAS DIVISION

*Completed No Inspector*

**951**

**WELL RECORD**  
ABANDONMENT

Permit No. Ab 537-A

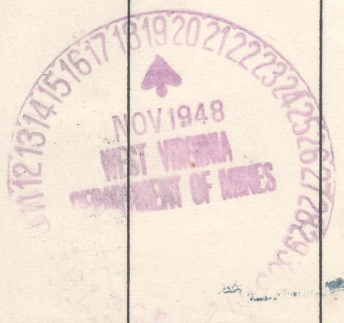
Oil or Gas Well Oil  
(KIND)

Company UNITED FUEL GAS CO.  
Address P.O. Box 1273, Charleston 25, W. Va.  
Farm Richard Woodrum Acres 150  
Location (waters) Sugar Tree Pk.  
Well No. 2 Elev. 1054  
District Union County Lincoln  
The surface of tract is owned in fee by \_\_\_\_\_  
Address \_\_\_\_\_  
Mineral rights are owned by R. H. Woodrum, et al  
Alkol, Address W. Va.  
Drilling commenced 7-19-09  
Drilling completed 9-8-09  
Date Shot Not Given From \_\_\_\_\_ To \_\_\_\_\_  
With \_\_\_\_\_  
Open Flow \_\_\_\_\_ /10ths Water in \_\_\_\_\_ Inch  
\_\_\_\_\_ /10ths Merc. in \_\_\_\_\_ Inch  
Volume \_\_\_\_\_ Cu. Ft.  
Rock Pressure \_\_\_\_\_ lbs. \_\_\_\_\_ hrs.  
Oil Not Shown bbls., 1st 24 hrs.  
Fresh water \_\_\_\_\_ feet \_\_\_\_\_ feet  
Salt water \_\_\_\_\_ feet \_\_\_\_\_ feet

Casing and Tubing	Used in Drilling	Left in Well	Packers
Size			
16			Kind of Packer
13			
10			Size of
8 1/4			
6 5/8	<u>1830</u>	<u>1830</u>	Depth set
5 3/16			
3			Perf. top
<u>2 Tubing</u>		<u>2514</u>	Perf. bottom
Liners Used			Perf. top
			Perf. bottom

CASING CEMENTED	SIZE	No. Ft.	Date
COAL WAS ENCOUNTERED AT			
		FEET	INCHES
		FEET	INCHES
		FEET	INCHES

Formation	Color	Hard or Soft	Top	Bottom	Oil, Gas or Water	Depth Found	Remarks
Salt Sand			1100	1730			
Little Lime			1790	1820			
Pencil Cave			1820	1825			
Big Lime			1825	2010			
Big Injun			2020	2060			
Brown Shale			2477	2497			
Berea			2497	2520			
Total Depth				2520			



(Over)

JUL 10 1949

