

Latitude 38° 15'

Longitude 81° 55'

(No Commercial Coal)

0.56	S
#5	3.41 W
#13	0.69 S 3.11 W
#23	0.50 S 3.11 W

Map 125W Sq. 581 W 77

- New Location
- Drill Deeper
- Abandonment

Company South Penn Natural Gas Co
 Address Parkersburg W. Va.
 Farm Matthew Spurlock
 Tract _____ Acres 222 Lease No. 71072
 Well (Farm) No. 5-13 & 23 Serial No. _____
 Elevation (Spirit Level) D.F. see above
 Quadrangle Madison
 County Lincoln District Duval
 Engineer E. C. Tabler
 Engineer's Registration No. _____
 File No. _____ Drawing No. _____
 Date 8-12-43 Scale 1" = 800'

STATE OF WEST VIRGINIA
 DEPARTMENT OF MINES
 OIL AND GAS DIVISION
 CHARLESTON

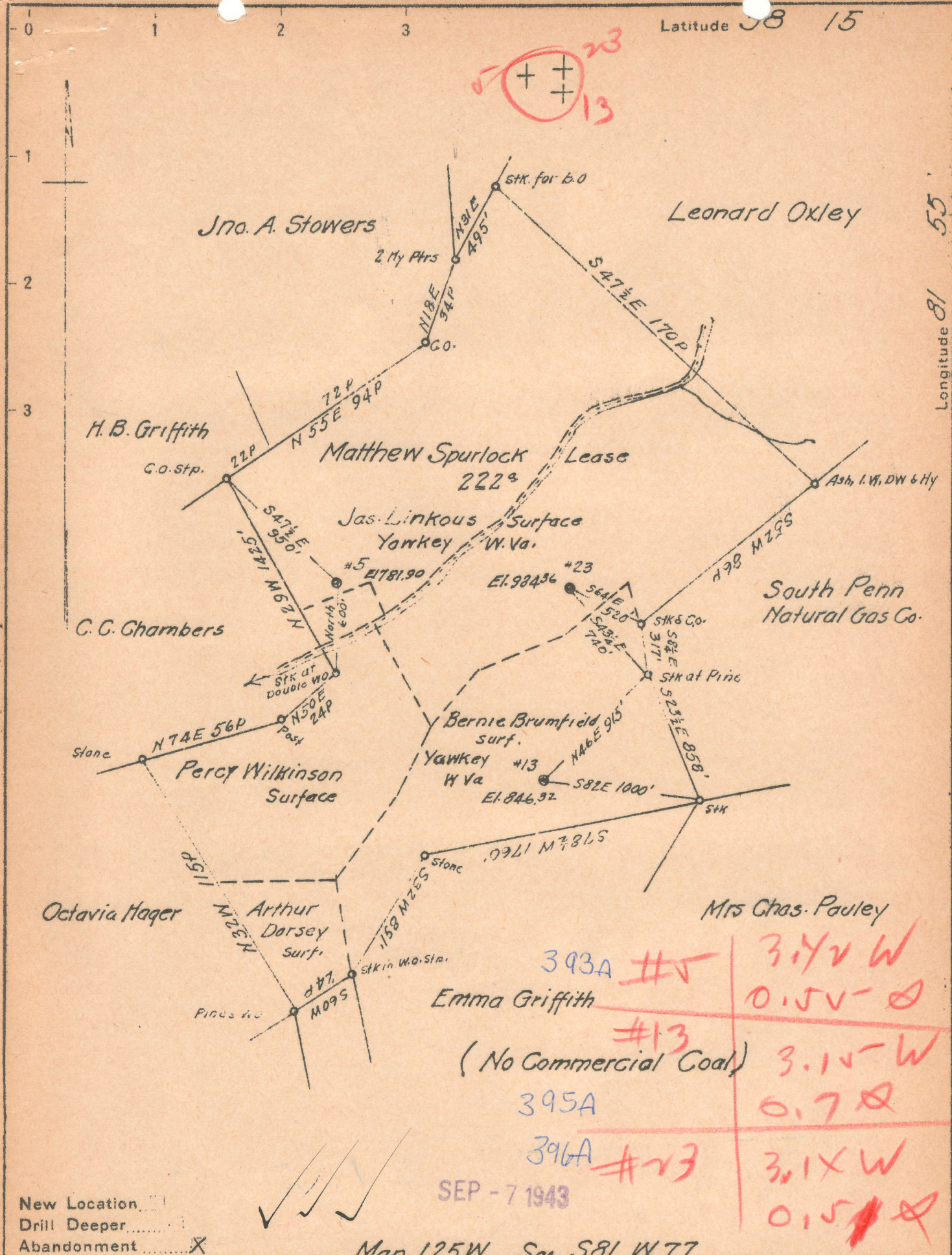
WELL LOCATION MAP
 FILE NO. Lin-393-A #v
Lin-395-A-13 / Lin-396-A-23

+ Denotes location of well on United States Topographic Maps, scale 1 to 62,500, latitude and longitude lines being represented by border lines as shown.

- Denotes one inch spaces on border line of original tracing.

Latitude 38 15

Longitude 81 55



New Location
 Drill Deeper
 Abandonment

Map 125W Sq. 581 W 77

Company South Penn Natural Gas Co
 Address Parkersburg W. Va.
 Farm Matthew Spurlock
 Tract _____ Acres 222 Lease No. 71067
 Well (Farm) No. 5-13 & 23 Serial No. 71072
 Elevation (Spirit Level) D.F. see above
 Quadrangle Madison
 County Lincoln District Duval
 Engineer E. C. Tabler
 Engineer's Registration No. _____
 File No. _____ Drawing No. _____
 Date 8-12-43 Scale 1" = 800'

STATE OF WEST VIRGINIA
 DEPARTMENT OF MINES
 OIL AND GAS DIVISION
 CHARLESTON

WELL LOCATION MAP
 FILE NO. LIN-393-A #5

+ Denotes location of well on United States Topographic Maps, scale 1 to 62,500, latitude and longitude lines being represented by border lines as shown.

- Denotes one inch spaces on border line of original tracing.

MATTHEW SPURLOCK M. 5-13-23 7 SOUTH PENN N G C O - LIN-393-A



STATE OF WEST VIRGINIA
DEPARTMENT OF MINES
OIL AND GAS DIVISION

674

WELL RECORD

Permit No.

Oil or Gas Well..... OIL
(KIND)

Company South Penn Natural Gas Company
Address Union Trust Bldg. Parkersburg, W. Va.
Farm Matthew Spurlock Acres 222
Location (waters) Road Fork
Well No. 5 Elev. 781.90
District Duval County Lincoln
The surface of tract is owned in fee by Jas. Linkous
Yawkey, Address W. Va.
Mineral rights are owned by C.A. Spurlock et al
2605 First Ave., Address Huntington, W. Va.
Drilling commenced April 8, 1912
Drilling completed May 20, 1912
Date Shot 5-21-12 From -- To --
With 80 qts.

Casing and Tubing	Used in Drilling	Left in Well	Packers
Size			Kind of Packer
16.			--
13.			--
10.			Size of
8 1/4.			--
6 3/8.	1568'		Depth set
5 3/16.			--
3.			Perf. top
2.			Perf. bottom
Liners Used			Perf. top
Cond.	15'		Perf. bottom

Open Flow /10ths Water in. --- Inch
/10ths Merc. in. --- Inch
Volume --- Cu. Ft.
Rock Pressure --- lbs. --- hrs.
Oil 22 bbls., 1st 24 hrs.
Fresh water --- feet --- feet
Salt water 960 feet --- feet

CASING CEMENTED --- SIZE --- No. Ft. --- Date
COAL WAS ENCOUNTERED AT 290 FEET 72? INCHES
--- FEET --- INCHES --- FEET --- INCHES
--- FEET --- INCHES --- FEET --- INCHES

Formation	Color	Hard or Soft	Top	Bottom	Oil, Gas or Water	Depth Found	Remarks
Sand			15	40			
Slate			40	190			
Sand			190	290			
Coal			290	296			
Slate			296	300			
Sand			300	350			
Slate			350	400			
Sand			400	625			
Slate			625	745			
Sand			745	855			
Slate			855	890			
Lime			890	920			
Slate			920	930			
Salt Sand			930	1475			
Slate			1475	1520	Water	960	
Little Lime			1520	1552			
Pencil Cave			1552	1557			
Big Lime			1557	1750			
B. Injun			1750	1800			
Slate			1800	1870			
Squaw			1870	1980			
Slate			1980	2253			
Berea Sand			2253	2273			
Total Depth				2273			

