

New Location
 Drill Deeper
 Abandonment

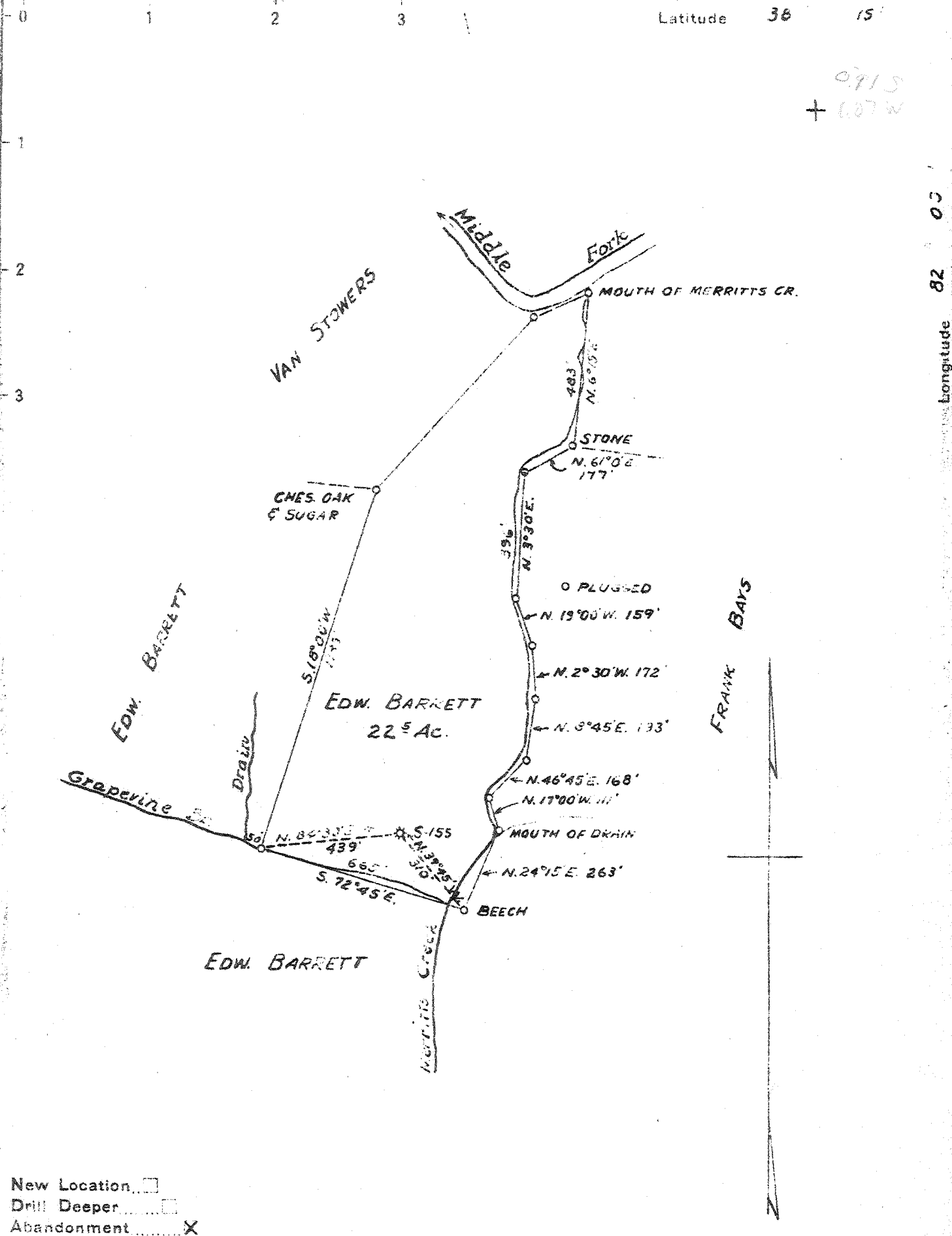
*0.89 S
 1.10 W
 Same top loc as another well
 a lazy sloppy job!*

Company	SOUTHEASTERN GAS CO.		
Address	HAMLIN, W.VA.		
Farm	EDWARD BARRETT		
Tract	Acres 22.5	Lease No.	2526
Well (Farm) No.	1	Serial No.	154
Elevation (Spirit Level)	690		
Quadrangle	MIDKIFF		
County	LINCOLN	District	DUVALL
Engineer	J. G. Ewing		
Engineer's Registration No.	4		309
File No.	Drawing No.		
Date	5-7-43	Scale	1" = 400'

STATE OF WEST VIRGINIA
 DEPARTMENT OF MINES
 OIL AND GAS DIVISION
 CHARLESTON

WELL LOCATION MAP
 FILE NO. **LIN-377-A**

+ Denotes location of well on United States Topographic Maps, scale 1 to 62,500, latitude and longitude lines being represented by border lines as shown.
 - Denotes one inch spaces on border line of original tracing.



New Location
 Drill Deeper
 Abandonment

Company SOUTHEASTERN GAS CO.
 Address HAMLIN, W.VA.
 Farm EDWARD BARRETT
 Tract _____ Acres 22.5 Lease No. 2526
 Well (Farm) No. 1 Serial No. 155
 Elevation (Spirit Level) 690
 Quadrangle MIDKIFF
 County LINCOLN District DUVALL
 Engineer S. B. Ewing (COPY)
 Engineer's Registration No. 309
 File No. _____ Drawing No. _____
 Date 5-7-43 Scale 1"=400'

STATE OF WEST VIRGINIA
 DEPARTMENT OF MINES
 OIL AND GAS DIVISION
 CHARLESTON

WELL LOCATION MAP
 FILE NO. LIN-377-A

+ Denotes location of well on United States Topographic Maps, scale 1 to 62,500, latitude and longitude lines being represented by border lines as shown.

- Denotes one inch spaces on border line of original tracing.