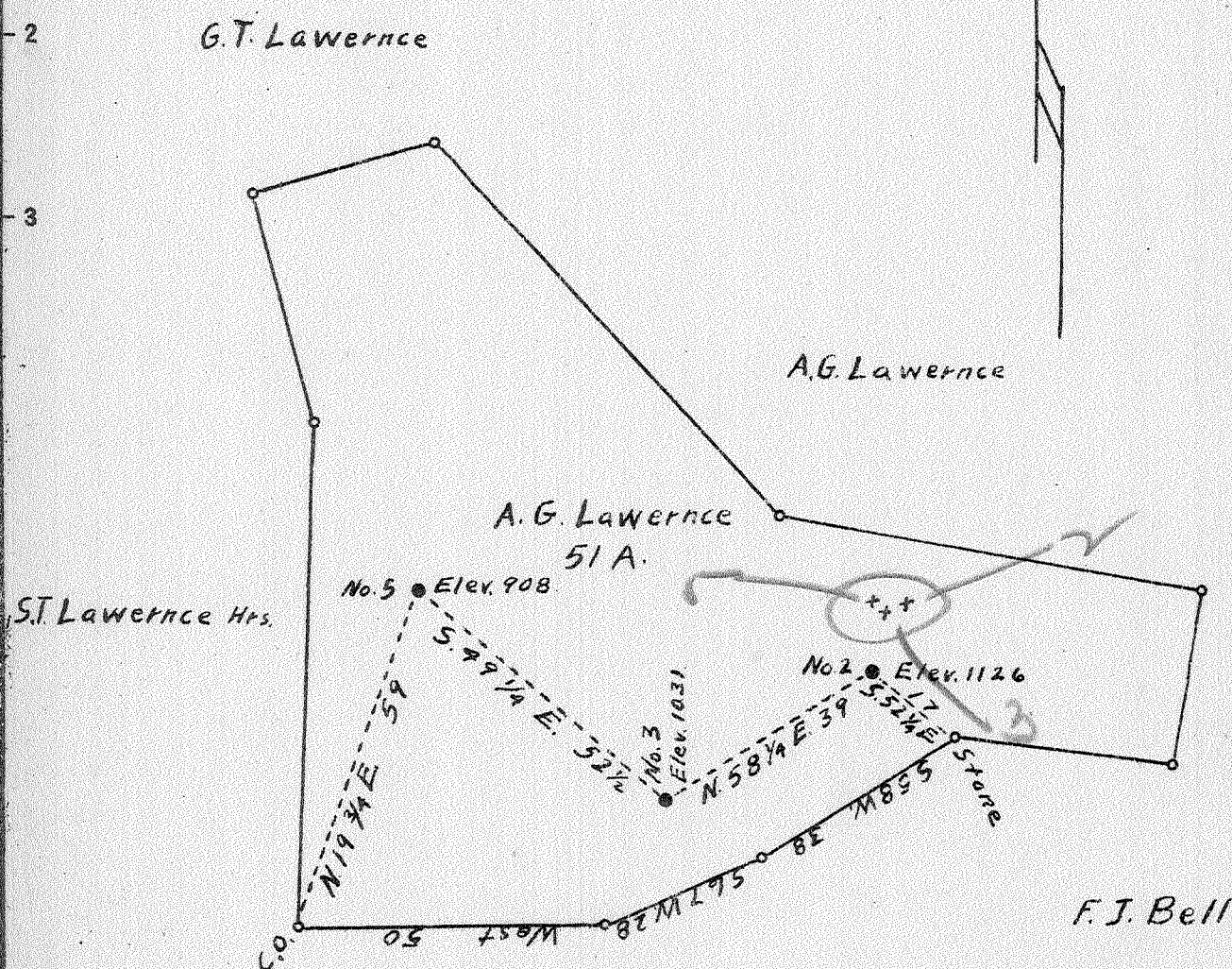


0 1 2 3 Latitude 38° 20'

-1  
-2  
-3 Longitude 81° 55'



M.A. Lawrence

#2	2.66 W
	5.33 Q
#3	2.77 W
	5.31 Q
#5	2.85 W
	5.39 Q

New Location   
 Drill Deeper   
 Abandonment

FEB 1 1943

Company Frick-Ried Supply Corporation  
 Address Sandyville, West Virginia  
 Farm A.G. Lawrence  
 Tract \_\_\_\_\_ Acres 51 Lease No. \_\_\_\_\_  
 Well (Farm) No. 2-3-5 Serial No. \_\_\_\_\_  
 Elevation (Spirit Level) 1126-1031-908  
 Quadrangle Saint Albans  
 County Lincoln District Duval  
 Engineer A.K. Westfall  
 Engineer's Registration No. Co. Surveyor, Ritchie Co.  
 File No. \_\_\_\_\_ Drawing No. \_\_\_\_\_  
 Date May 21, 1942 Scale 1" = 30 Poles

STATE OF WEST VIRGINIA  
 DEPARTMENT OF MINES  
 OIL AND GAS DIVISION  
 CHARLESTON

WELL LOCATION MAP  
 FILE NO. LIN-354-A #2  
LIN-355-A #3  
LIN-356-A #5  
 + Denotes location of well on United States Topographic Maps, scale 1 to 62,500, latitude and longitude lines being represented by border lines as shown.  
 - Denotes one inch spaces on border line of original tracing.

355A

Duval District, Lincoln County, W. Va.

By Frick-Reid Supply Corp., Drawer 2481, Tulsa, Okla.

Abandoned under permit Lin-.....-A?

On 31 acres, on Sams Branch of Straight Fork of Mud River.

Elevation, 1031' L.

Drilling commenced Dec. 10, 1909; completed, Jan. 28, 1910.

Shot Jan. 29, 1910, at 2512-2530', with 90 qts. nitroglycerine.

Salt water, 1280'.

13" wood conductor, 16'; 6 $\frac{5}{8}$ " casing, 1832'; 2" tubing, 2532'.

Oil well. Abandonment reported to Dept. of Mines Aug. 15, 1942.

Record to RCT from Mrs. Griffith Dec. 19, 1942.

	Top.	Bottom.
Slate	0	40
Red rock	40	100
Slate	100	135
Sand	135	190
Slate	190	310
Sand	310	330
Slate	330	510
Sand	510	600
Slate	600	840
Sand	840	937
Slate	937	1002
Sand	1002	1042
Slate	1042	1142
Salt Sand (water, 1280')	1142	1800
Little Lime	1800	1820
Pencil Cave	1820	1832
Big Lime	1832	1997
Slate	1997	2157
Lime shells	2157	2257
Slate	2257	2492
Slate, black	2492	2510
Berea Sand	2510	2532
Total depth		2534

STATE OF WEST VIRGINIA  
DEPARTMENT OF MINES  
OIL AND GAS DIVISION

646

WELL RECORD

Permit No. UTP 355-A

Oil or Gas Well Oil Well  
(KIND)

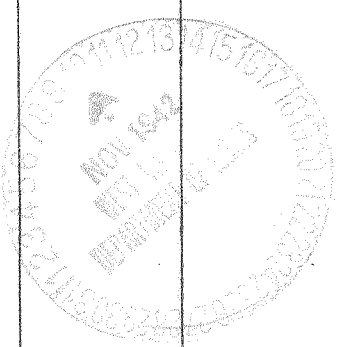
Company Frick-Reid Supply Corporation  
Address Drawer 2481, Tulsa, Okla.  
Farm A. G. Lawrence Acres 31  
Location (waters) Sam's Br. of Str. Fk. Mud River  
Well No. Three Elev. 1031  
District Duval County Lincoln  
The surface of tract is owned in fee by.....  
Address.....  
Mineral rights are owned by.....  
Address.....  
Drilling commenced December 10, 1909  
Drilling completed January 28, 1910  
Date Shot 1/29/10 From 2512 To 2530  
With 90 Qts Nitro-glycerine

Casing and Tubing	Used in Drilling	Left in Well	Packers
Size			Kind of Packer.....
16			
13 Wood	16	16	Size of.....
10			Depth set.....
8 1/4			
6 5/8	1832	1832	Perf. top.....
5 3/16			Perf. bottom.....
3		2532	Perf. top.....
2			Perf. bottom.....
Liners Used.....			

Open Flow /10ths Water in..... Inch  
/10ths Merc. in..... Inch  
Volume..... Cu. Ft.  
Rock Pressure..... lbs..... hrs.  
Oil..... bbls., 1st 24 hrs.  
Fresh water..... feet..... feet  
Salt water 1280 feet..... feet

CASING CEMENTED..... SIZE..... No. Ft..... Date.....  
COAL WAS ENCOUNTERED AT..... FEET..... INCHES  
..... FEET..... INCHES..... FEET..... INCHES  
..... FEET..... INCHES..... FEET..... INCHES

Formation	Color	Hard or Soft	Top	Bottom	Oil, Gas or Water	Depth Found	Remarks
Slate			0	40			
Red rock			40	100			
Slate			100	135			
Sand			135	190			
Slate			190	310			
Sand			310	330			
Slate			330	510			
Sand			510	600			
Slate			600	840			
Sand			840	937			
Slate			937	1002			
Sand			1002	1042			
Slate			1042	1142			
Salt sand			1142	1800	Water	1280	
Little lime			1800	1820			
Pencil cave			1820	1832			
Big lime			1832	1997			
Slate			1997	2157			
Lime shells			2157	2257			
Slate			2257	2492			
Slate	Black		2492	2510			
Berea sand			2510	2532			
Total depth			2534				



DEC 15 1910

