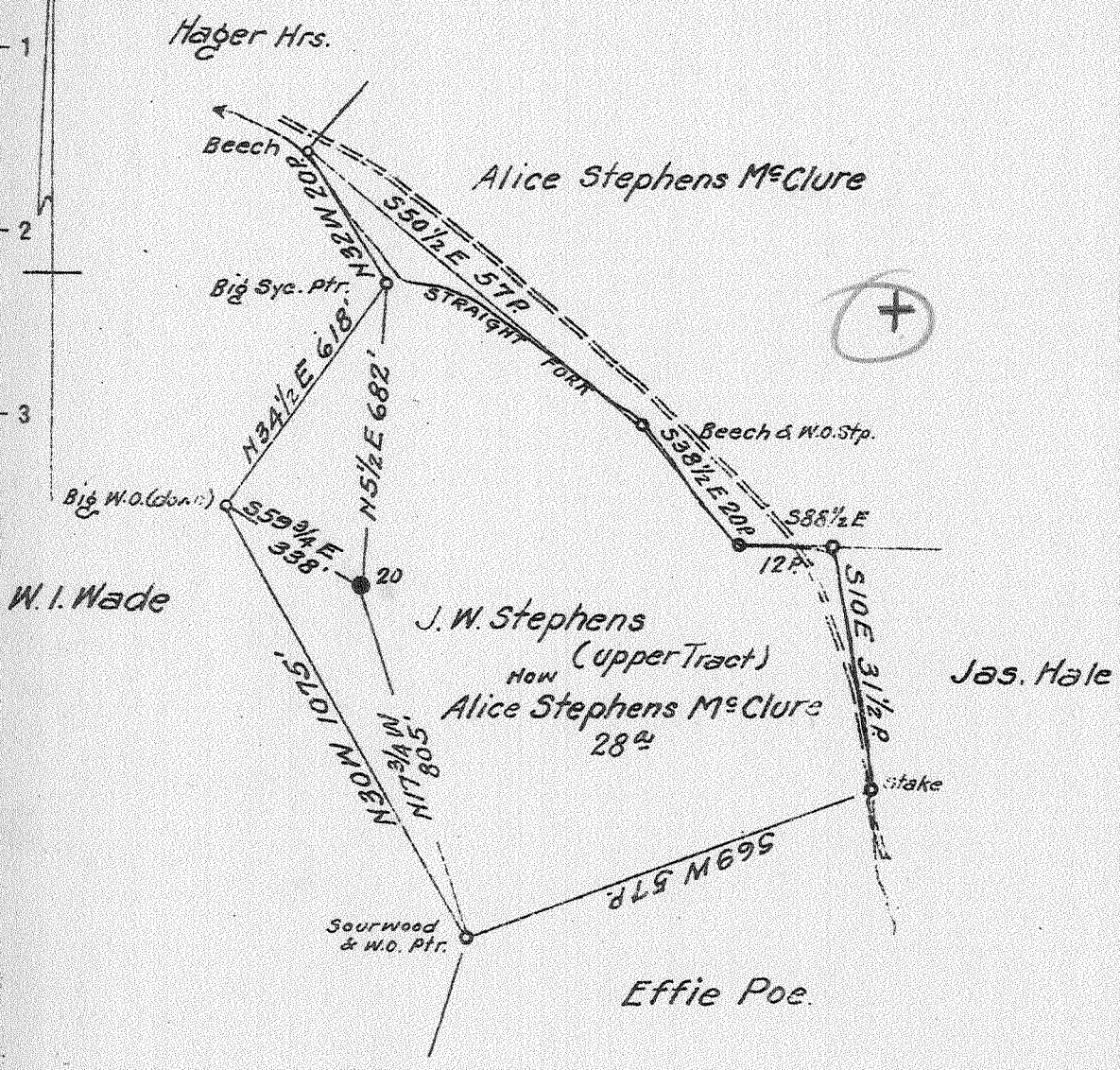


Latitude 8 15'

Longitude 81 55'



No Commercial Coal  
 Surface: Mrs Alice Stephens McClure  
 Yawkey, W. Va.

2.68 W  
 2.6 Q

New Location   
 Drill Deeper   
 Abandonment

JUL 13 1942

583-84 W 76-77 Map 135 W.

Company	South Penn Natural Gas Co.
Address	Parkersburg, W. Va.
Farm	J.W. Stephens (Upper Tract)
Tract	Acres 221 Lease No. 71117
Well (Farm) No.	20 Serial No.
Elevation (Spirit Level)	962.17
Quadrangle	Madison
County	Lincoln District Duval
Engineer	E.C. Tabler
Engineer's Registration No.	
File No.	Drawing No.
Date	May 19, 1942 Scale 1" = 800'

STATE OF WEST VIRGINIA  
 DEPARTMENT OF MINES  
 OIL AND GAS DIVISION  
 CHARLESTON

WELL LOCATION MAP  
 FILE NO. Lin 326 A

+ Denotes location of well on United States Topographic Maps, scale 1 to 62,500, latitude and longitude lines being represented by border lines as shown.  
 - Denotes one inch spaces on border line of original tracing.

J.W. STEPHENS No. 20 (UPPER TRACT) SOUTH PENN NAT. GAS CO. LIN-326-A

STATE OF WEST VIRGINIA  
DEPARTMENT OF MINES  
OIL AND GAS DIVISION

696

WELL RECORD

Permit No. 3276-A

Oil or Gas Well OIL  
(KIND)

Company <u>South Penn Natural Gas Company</u>	Casing and Tubing	Used in Drilling	Left in Well	Packers
Address <u>Union Trust Bldg. Parkersburg, W. Va.</u>	Size			
Farm <u>J.W. Stephens (Upper Tract) 221</u>	16			Kind of Packer <u>-</u>
Location (waters) <u>Straight Fork</u>	13			<u>-</u>
Well No. <u>20</u> Elev. <u>962.17</u>	8 1/4	<u>485'</u>		Size of <u>-</u>
District <u>Duval</u> County <u>Lincoln</u>	6 5/8	<u>1760'</u>		Depth set <u>-</u>
The surface of tract is owned in fee by <u>Mrs. Alice Stephens</u>	5 3/16	<u>473'</u>		Perf. top <u>-</u>
<u>McClure,</u> Address <u>Yawkey, W. Va.</u>	3			Perf. bottom <u>-</u>
Mineral rights are owned by <u>J.R. Saul et al., RFD#1,</u>	2			Perf. top <u>-</u>
<u>Box 404, Clark Lane, Charleston, W. Va.</u>	Liners Used			Perf. bottom <u>-</u>
Drilling commenced <u>Dec. 15, 1915</u>	Cond. <u>14'</u>			
Drilling completed <u>Jan. 24, 1916</u>				
Date Shot <u>2-14-16</u> From <u>--</u> To <u>--</u>				
With <u>80 qts.</u>				

Open Flow /10ths Water in <u>---</u> Inch	CASING CEMENTED <u>-</u> SIZE <u>-</u> No. Ft. <u>-</u> Date <u>-</u>
/10ths Merc. in <u>---</u> Inch	
Volume <u>---</u> Cu. Ft.	
Rock Pressure <u>---</u> lbs. <u>---</u> hrs.	COAL WAS ENCOUNTERED AT <u>430</u> FEET <u>48</u> INCHES
Oil <u>8</u> bbls., 1st 24 hrs.	<u>-</u> FEET <u>-</u> INCHES <u>-</u> FEET <u>-</u> INCHES
Fresh water <u>480</u> feet <u>--</u> feet	<u>-</u> FEET <u>-</u> INCHES <u>-</u> FEET <u>-</u> INCHES
Salt water <u>1190</u> feet <u>--</u> feet	

Formation	Color	Hard or Soft	Top	Bottom	Oil, Gas or Water	Depth Found	Remarks
Slate			14	39			
Sand			39	59			
Slate			59	99			
Sand			99	160			
Slate			160	190			
Sand			190	240			
Slate			240	265			
Sand			265	325			
Slate			325	340			
Sand			340	420			
Slate			420	430			
Coal (No commercial coal)			430	434			
Slate			434	485			
sand			485	630	Water	480	
Slate & Shells			630	970			
Salt Sand			970	1645			
Slate			1645	1665	Water	1190	Hole full
Red Rock			1665	1680			
Black Lime			1680	1690			
Slate			1690	1710			
Little Lime			1710	1742			
Pencil Cave			1742	1750			
Big Lime			1750	1930			
Big Injun			1930	2000			
Slate			2000	2060			
Lime Shells			2060	2150			
Slate			2150	2341			
Shells			2341	2401			
Brown Shale			2401	2421			
Berea Sand			2421	2440			
Total Depth				2440			

