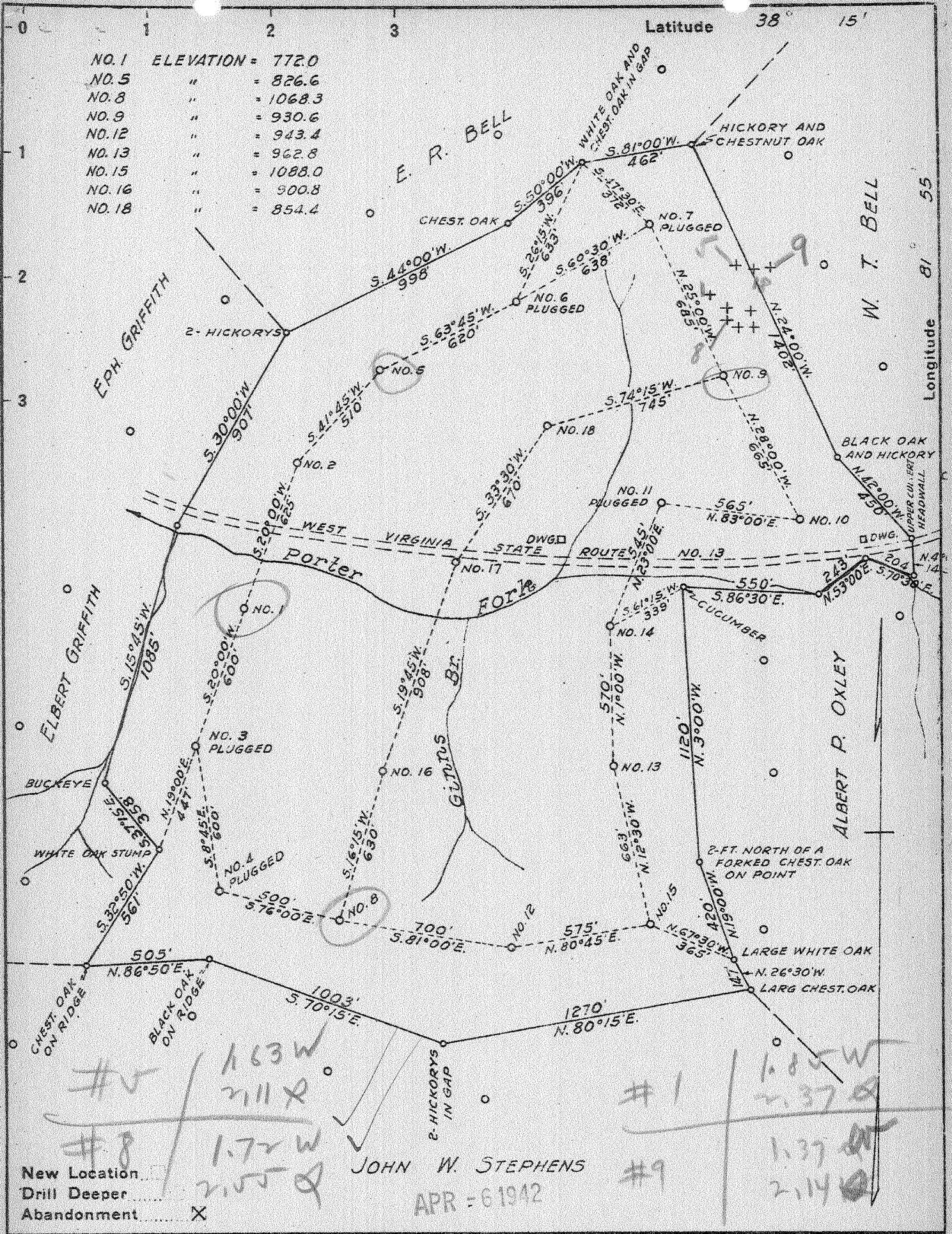


NO. 1	ELEVATION =	772.0
NO. 5	"	= 826.6
NO. 8	"	= 1068.3
NO. 9	"	= 930.6
NO. 12	"	= 943.4
NO. 13	"	= 962.8
NO. 15	"	= 1088.0
NO. 16	"	= 900.8
NO. 18	"	= 854.4



New Location
 Drill Deeper
 Abandonment

JOHN W. STEPHENS
 APR - 6 1942

Company FRICK-REID SUPPLY CORPORATION
 Address SANDYVILLE, WEST VA.
 Farm T.A. & M.A. GRIFFITH
 Tract. 1 Acres 160 Lease No. 1-5-8-9-12
 Well (Farm) No. 13-15-16-18 Serial No. _____
 Elevation (Spirit Level) _____
 Quadrangle MADISON
 County LINCOLN District DUVAL
 Engineer L. C. Ewing
 Engineer's Registration No. 309
 File No. _____ Drawing No. _____
 Date 2-16-42 Scale 1"=500'

STATE OF WEST VIRGINIA
 DEPARTMENT OF MINES
 OIL AND GAS DIVISION
 CHARLESTON

WELL LOCATION MAP

FILE NO. LIN-283-A WELL # 1
LIN-284-A WELL # 9

+ Denotes location of well on United States Topographic Maps, scale 1 to 62,500, latitude and longitude lines being represented by border lines as shown. LIN-294-A - # 5
LIN-295-A - # 8
 - Denotes one inch spaces on border line of original tracing.

294A

Duval District, Lincoln County, W. Va.

By United Fuel Gas Co. (Big Creek Development Co., CWL Rpt.)

Elevation, 930'.

Drilling commenced May 8, 1909, and completed June 16, 1909.

Contractor, United Fuel Drilling Co.

Drillers: Harry Nally and C. Irwin.

Shot June 16, 1909, with 90 qts.

Examined and approved by E. B. South, Foreman.

	Top.	Bottom.	Thickness.
Slate and sandstone	0	- 60	60
Sand	60	- 140	80
Lime	140	- 200	60
Slate	200	- 320	120
Sand	320	- 390	70
Slate and shells	390	- 615	225
Sand	615	- 700	85
Slate	700	- 980	280
Salt Sand	980	- 1640	660
Slate	1640	- 1670	30
Little Lime	1670	- 1710	40
Pencil Cave	1710	- 1715	5
Big Lime	1715	- 1919	204
Sand	1919	- 1990	71
Shells and slate	1990	- 2135	145
Slate	2135	- 2389	354
Berea Sand (oil)	2389	- 2409	20
Total depth		2409	

STATE OF WEST VIRGINIA
DEPARTMENT OF MINES
OIL AND GAS DIVISION

588

WELL RECORD

Permit No. 294-A

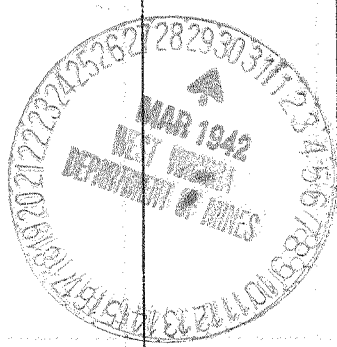
Oil or Gas Well Oil
(KIND)

Company Frick-Reid Supply Corporation
Address Drawer 2481, Tulsa, Okla.
Farm T. A. & M. A. Griffith Acres 160
Location (waters) Porter's Fork, Mud River
Well No. Five Elev. 827
District Duval County Lincoln
The surface of tract is owned in fee by J. W. Stickler
Address Yawkey, W. Va.
Mineral rights are owned by Mrs. M. A. Hill and T. A. Griffith Heirs
Address Madison, W. Va.
Drilling commenced May 8, 1909
Drilling completed June 16, 1909
Date Shot 6-16-1909 From 2389 To 2409
With 90 qts. Nitro-glycerine
Open Flow /10ths Water in Inch
 /10ths Merc. in Inch
Volume Cu. Ft.
Rock Pressure lbs. hrs.
Oil bbls., 1st 24 hrs.
Fresh water feet feet
Salt water feet feet

Casing and Tubing	Used in Drilling	Left in Well	Packers
Size			Kind of Packer
16			
13			
10 Wood	16'	16'	Size of
8 1/4			
6 5/8	1717'	1717'	Depth set
5 3/16			
3		2409'	Perf. top
2			Perf. bottom
Liners Used			Perf. top
			Perf. bottom

CASING CEMENTED SIZE No. Ft. Date
COAL WAS ENCOUNTERED AT FEET INCHES
 FEET INCHES FEET INCHES
 FEET INCHES FEET INCHES

Formation	Color	Hard or Soft	Top	Bottom	Oil, Gas or Water	Depth Found	Remarks
Slate & Sand			0	60			
Sand			60	140			
Lime			140	200			
Slate			200	320			
Sand			320	390			
Slate & Shells			390	615			
Sand			615	700			
Slate			700	980			
Salt Sand			980	1640			
Slate			1640	1670			
Little lime			1670	1710			
Pencil cave			1710	1715			
Big lime			1715	1919			
Sand			1919	1990			
Shells & slate			1990	2135			
Slate			2135	2389			
Berea Sand			2389	2409			



MAY 22 1942

