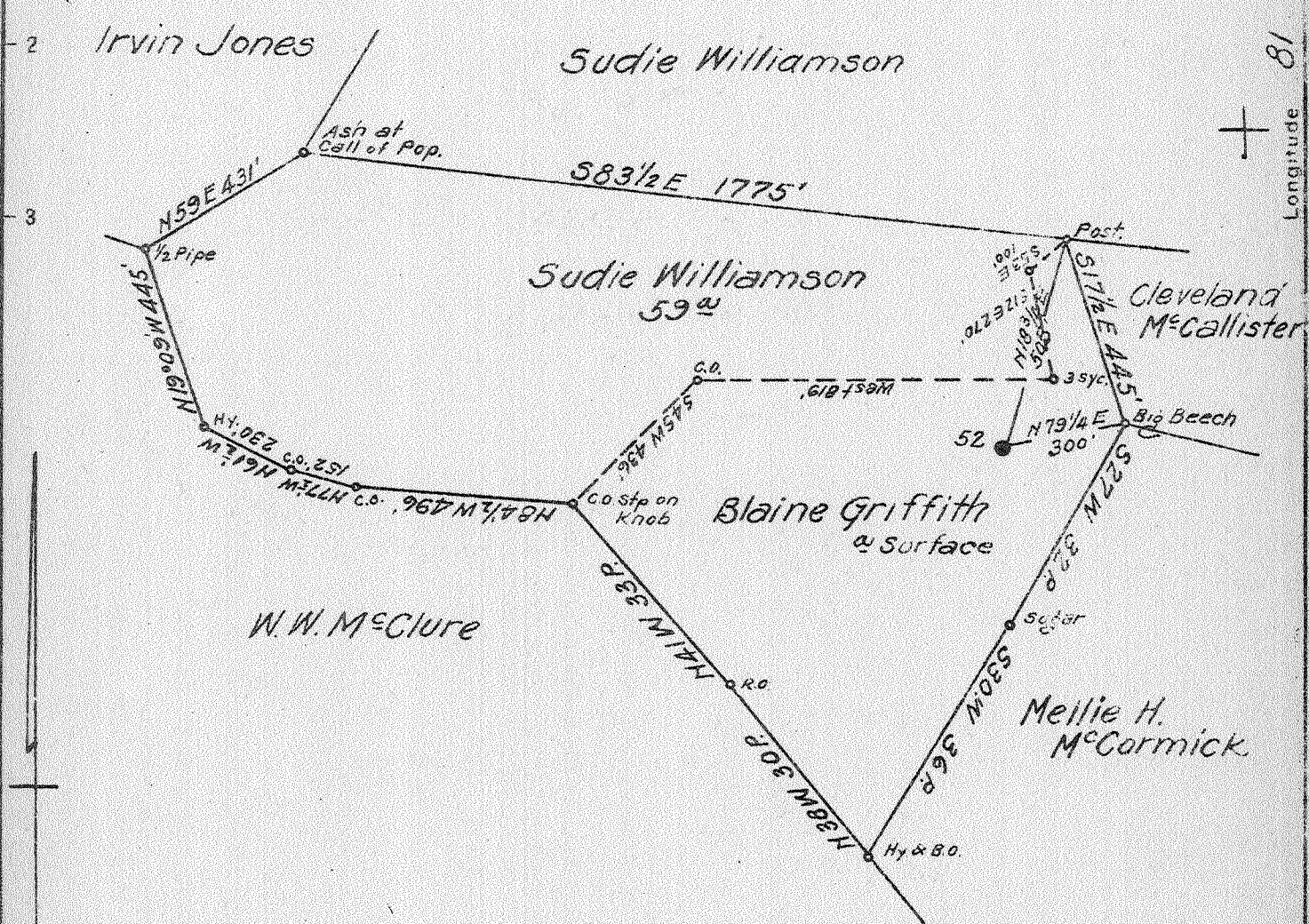


Latitude 38 15'

Longitude 81 55'



Coal: Horse Creek Land & Mining Co.
Charleston, W. Va.

Surface: Blaine Griffith
Yawkey, W. Va.

0.37 W
2.7 Q

APR - 6 1942

583 W 74

Map 124 W.

New Location
Drill Deeper
Abandonment X

Company	South Penn Natural Gas Co.
Address	Parkersburg, W. Va.
Farm	Horse Creek Tract
Tract	Acres 11327 Lease No. 57128
Well (Farm) No.	52 Serial No.
Elevation (Spirit Level)	925.22
Quadrangle	Madison
County	Lincoln District Duval
Engineer	E. C. Tabler
Engineer's Registration No.	
File No.	Drawing No.
Date	Jan. 15, 1942 Scale 1" = 400'

STATE OF WEST VIRGINIA
DEPARTMENT OF MINES
OIL AND GAS DIVISION
CHARLESTON

WELL LOCATION MAP
FILE NO. LIN-292-A

+ Denotes location of well on United States Topographic Maps, scale 1 to 62,500, latitude and longitude lines being represented by border lines as shown.
- Denotes one inch spaces on border line of original tracing

HORSE CREEK TRACT No. 52 - SOUTH PENN NAT. GAS CO. - LIN-292-A

STATE OF WEST VIRGINIA
DEPARTMENT OF MINES
OIL AND GAS DIVISION

597

WELL RECORD

OIL

Permit No. 297-A

Oil or Gas Well (KIND)

Company South Penn Natural Gas Company
Address Union Trust Bldg. Parkersburg, W. Va.
Farm Horse Creek Tract Acres 11327
Location (waters) -----
Well No. 52 Elev. 925.22
District Duval County Lincoln
The surface of tract is owned in fee by Blaine Griffith
Yawkey, W. Va.
Address Horse Creek Land & Mining
Mineral rights are owned by Co., Box 213, Charleston, W. Va.
Address -----
Drilling commenced April 24, 1916
Drilling completed June 2, 1916
Date Shot 6-22-16 From Berea To XX
With 60 quarts

Casing and Tubing	Used in Drilling	Left in Well	Packers
Size			
16			Kind of Packer
13			
10			Size of
8 1/4	<u>533' (Pulled?)</u>		
6 5/8	<u>1711'</u>		Depth set
5 3/16	<u>1801'</u>		
3			Perf. top
2			Perf. bottom
Liners Used			Perf. top
Cond. <u>16'</u>			Perf. bottom

Open Flow /10ths Water in --- Inch
/10ths Merc. in --- Inch
Volume --- Cu. Ft.
Rock Pressure --- lbs. --- hrs.
Oil --- bbls., 1st 24 hrs.
Fresh water --- feet --- feet
Salt water 980 feet 1125 feet

CASING CEMENTED --- SIZE --- No. Ft. --- Date ---
COAL WAS ENCOUNTERED AT 265 FEET 60 INCHES
420 FEET 60 INCHES 480 FEET 36 INCHES
520 FEET 72 INCHES --- FEET --- INCHES

Formation	Color	Hard or Soft	Top	Bottom	Oil, Gas or Water	Depth Found	Remarks
Clay				16			
Slate			16	90			
Sand			90	135			
Slate			135	200			
Sand			200	265			
Coal			265	270			
Slate			270	290			
Sand			290	420			
Coal			420	425			
Slate & Lime			425	480			
Coal			480	483			
Slate			483	520			
Coal			520	526			
Slate & Lime			526	914			
Salt Sand			914	1515			
Slate & Shells			1515	1658			
Little Lime			1658	1678			
Pencil Cave			1678	1680			
Big Lime			1680	1875			
Big Injun			1875	1935			
Slate & Shells			1935	2355			
Berea Sand			2355				
					Water	980	
					Water	1125	Hole full
					Oil & Gas	2358-2365	
Total Depth				2375			

MAY 22 1917

