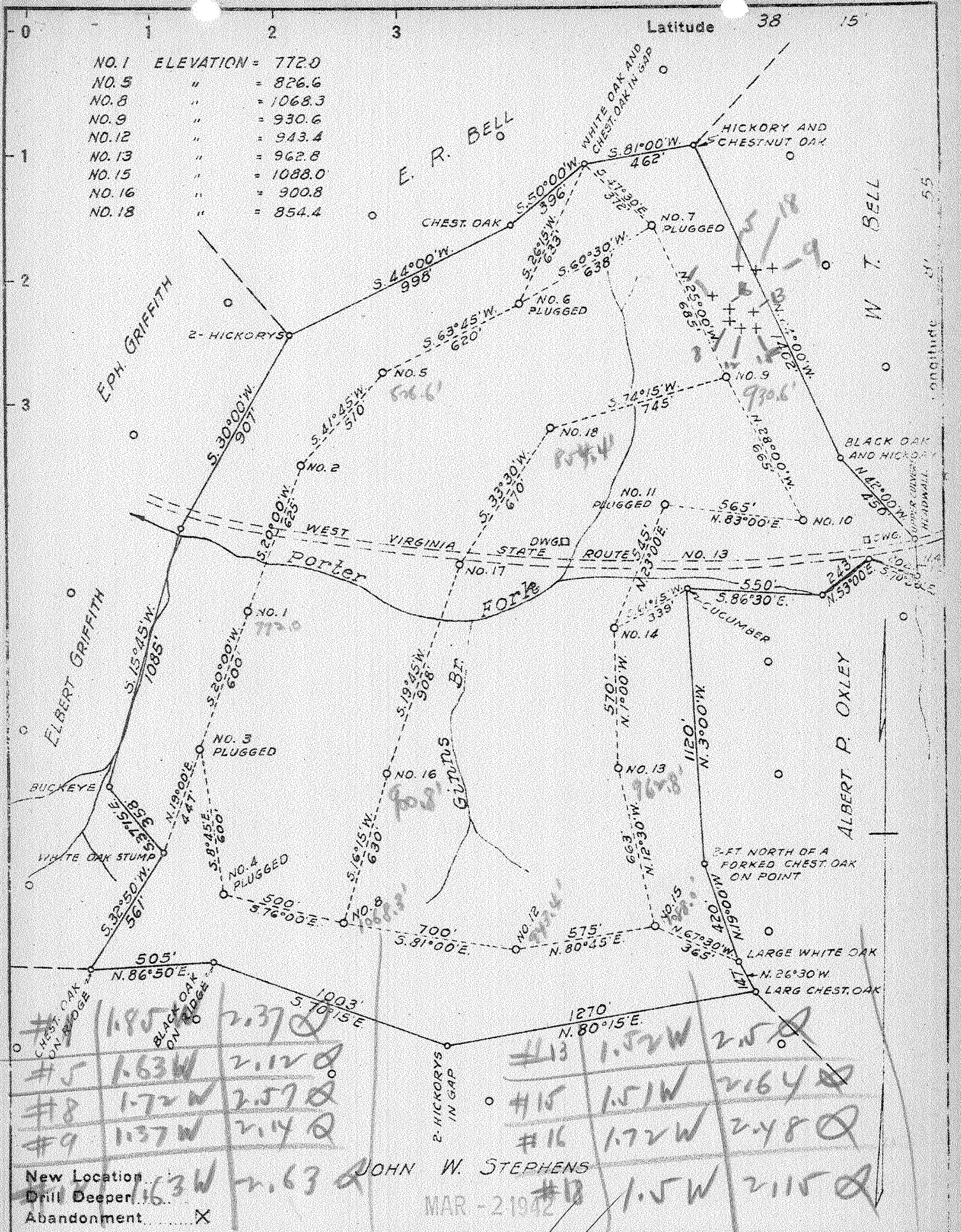


NO. 1	ELEVATION =	772.0
NO. 5	"	= 826.6
NO. 8	"	= 1068.3
NO. 9	"	= 930.6
NO. 12	"	= 943.4
NO. 13	"	= 962.8
NO. 15	"	= 1088.0
NO. 16	"	= 900.8
NO. 18	"	= 854.4



Company FRICK-REID SUPPLY CORPORATION  
 Address SANDYVILLE, WEST VA.  
 Farm T. A. & M. A. GRIFFITH  
 Tract 1 Acres 160 Lease No. 1-5-8-9-12  
 Well (Farm) No. 13-15-16-18 Serial No. \_\_\_\_\_  
 Elevation (Spirit Level) \_\_\_\_\_  
 Quadrangle MADISON  
 County LINCOLN District DUVAL  
 Engineer E. C. Ewing  
 Engineer's Registration No. 309  
 File No. \_\_\_\_\_ Drawing No. \_\_\_\_\_  
 Date 2-16-42 Scale 1"=500'

STATE OF WEST VIRGINIA  
 DEPARTMENT OF MINES  
 OIL AND GAS DIVISION  
 CHARLESTON

**WELL LOCATION MAP**  
 FILE NO. LIN-283-A WELL # 1  
LIN-284-A WELL # 2

+ Denotes location of well on United States Topographic Maps, scale 1 to 62,500. latitude and longitude lines being represented by border lines as shown.  
 - Denotes one inch spaces on border line of original tracing.

T. A. & M. A. GRIFFITH NOS. 5 - FRICK-REID LIN-283-A  
 13-15-16 & 18 - SUPPLY CORP. & 284-A

Duval District, Lincoln County, W. Va.

By United Fuel Gas Co.

Elevation, 935'.

Drilling commenced Dec. 11, 1909, and completed Jan. 25, 1910.

Contractor, United Fuel Drilling Co.

Drillers: Joe Triplett and Bruce Duncan.

Shot Jan. 25, 1910, with 90 qts.

Examined and approved by E. B. South, Foreman.

	Top.	Bottom.	Thickness.
Sand	15	- 110	95
Slate	110	- 375	265
Sand (reduced hole at 475')	375	- 610	235
Slate	610	- 800	190
Sand	800	- 900	100
Slate	900	- 990	90
Salt Sand (hole full water, 1090')	990	- 1671	681
Slate	1671	- 1676	5
Little Lime	1676	- 1714	38
Pencil Cave	1714	- 1719	5
Big Lime	1719	- 1899	180
Big Injun Sand	1899	- 1969	70
Slate and shells	1969	- 2020	51
Squaw Sand	2020	- 2100	80
Slate and shells	2100	- 2390	290
Berea Sand (oil)	2390	- 2412	22

284A

STATE OF WEST VIRGINIA  
DEPARTMENT OF MINES  
OIL AND GAS DIVISION

590

WELL RECORD

Permit No. 284-A

Oil or Gas Well Oil  
(KIND)

Company Frick-Reid Supply Corporation  
 Address Drawer 2481, Tulsa, Okla.  
 Farm T. A. & W. A. Griffith Acres 160  
 Location (waters) Porter's Fork, Mud River  
 Well No. Nine Elev. 931  
 District Duval County Lincoln  
 The surface of tract is owned in fee by J. W. Stickler  
 Address Yawkey, W. Va.  
 Mineral rights are owned by Mrs. W. A. Hill and  
T. A. Griffith's Hrs. Address Madison, W. Va.  
 Drilling commenced December 11, 1909  
 Drilling completed January 25, 1910.  
 Date Shot 1-25-1910 From 2390 To 2412  
 With 90 qts Nitro-Glycerine  
 Open Flow /10ths Water in Inch  
/10ths Merc. in Inch  
 Volume  Cu. Ft.  
 Rock Pressure  lbs. hrs.  
 Oil  bbls., 1st 24 hrs.  
 Fresh water  feet feet  
 Salt water  feet feet

Casing and Tubing	Used in Drilling	Left in Well	Packers
Size			Kind of Packer
16			
13			
10 Wood	16'	16'	Size of
8 1/4			
6 5/8	1722	1722	Depth set
5 3/16			
3			Perf. top
2		2412	Perf. bottom
Liners Used			Perf. top
			Perf. bottom

CASING CEMENTED  SIZE  No. Ft.  Date   
 COAL WAS ENCOUNTERED AT  FEET  INCHES  
 FEET  INCHES  FEET  INCHES  
 FEET  INCHES  FEET  INCHES

Formation	Color	Hard or Soft	Top	Bottom	Oil, Gas or Water	Depth Found	Remarks
Soil			0	15			
Sand			15	110			
Slate			110	375			
Sand			375	610			Reduced hole
Slate			610	800			475'
Sand			800	900			
Slate			900	990			
Salt Sand			990	1671	Salt Water	1090	
Slate			1671	1676			
Little Lime			1676	1714			
Pencil Cave			1714	1719			
Big Lime			1719	1899			
Big Injun			1899	1969			
Slate & Shells			1969	2020			
Squaw Sand			2020	2100			
Slate & Shells			2100	2390			
Berea Sand			2390	2412			