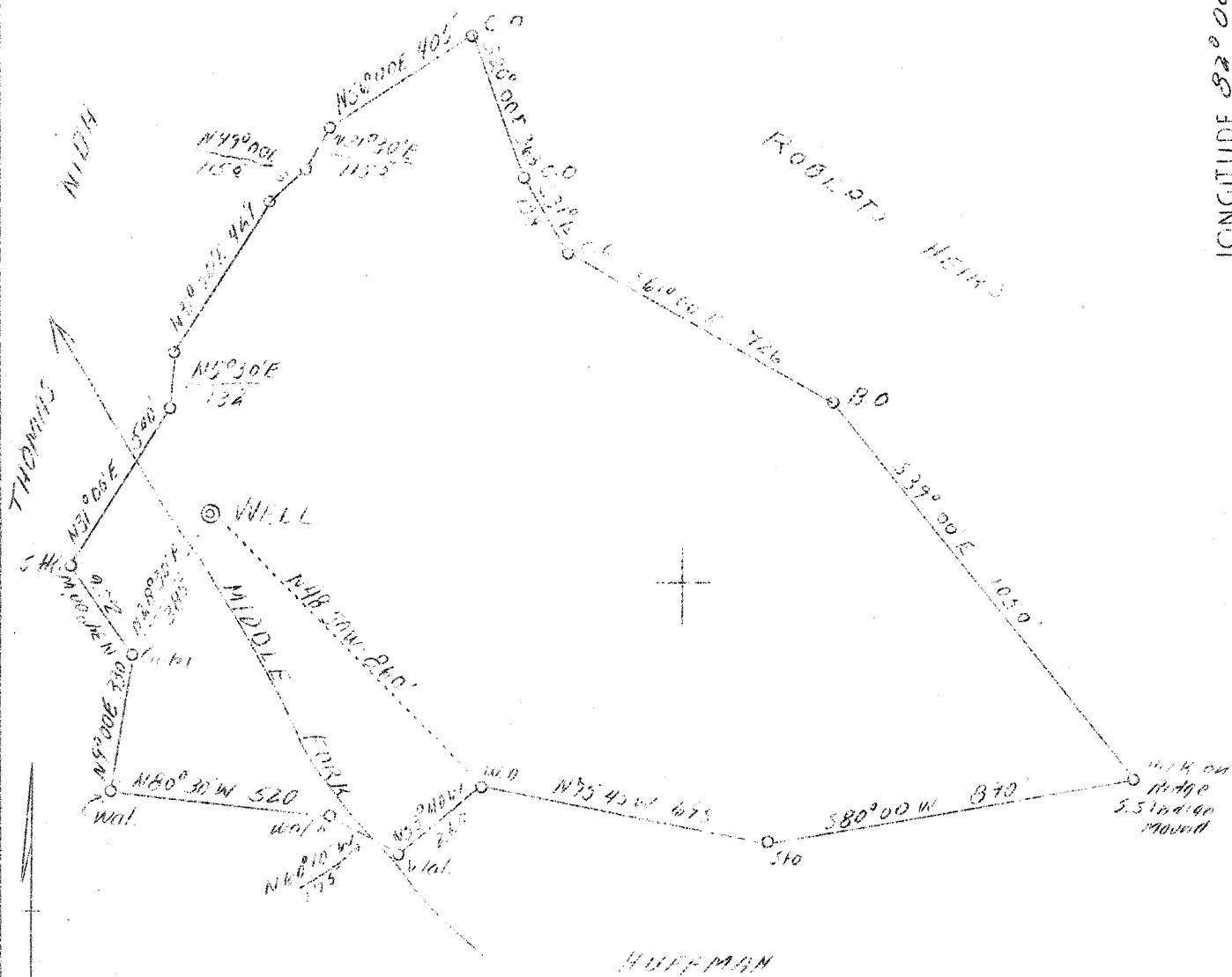


LATITUDE 38° 20'

LONGITUDE 82° 00'



ABD

Company	Kanawha Gas & Utilities
Address	Hamlin, W. Va.
Farm	Scott Richardson
Acres	63
Well (Farm) No.	1
Elevation (SL)	840
Quadrangle	Milton
County	Lincoln
District	Carroll
Engineer	S. V. Haworth
Eng. Reg. No.	224
Date	Oct. 11, 1939
Scale	1" = 300'

STATE OF WEST VIRGINIA
 Department of Mines
 OIL & GAS DIVISION
 Charleston

WELL LOCATION MAP

File No. Lin 205-A

x Denotes location of well on U. S. Topographic Maps, scale 1 to 62,500, latitude and longitude lines being represented by border lines as shown.

- Denotes one inch spaces on border line of original tracing.