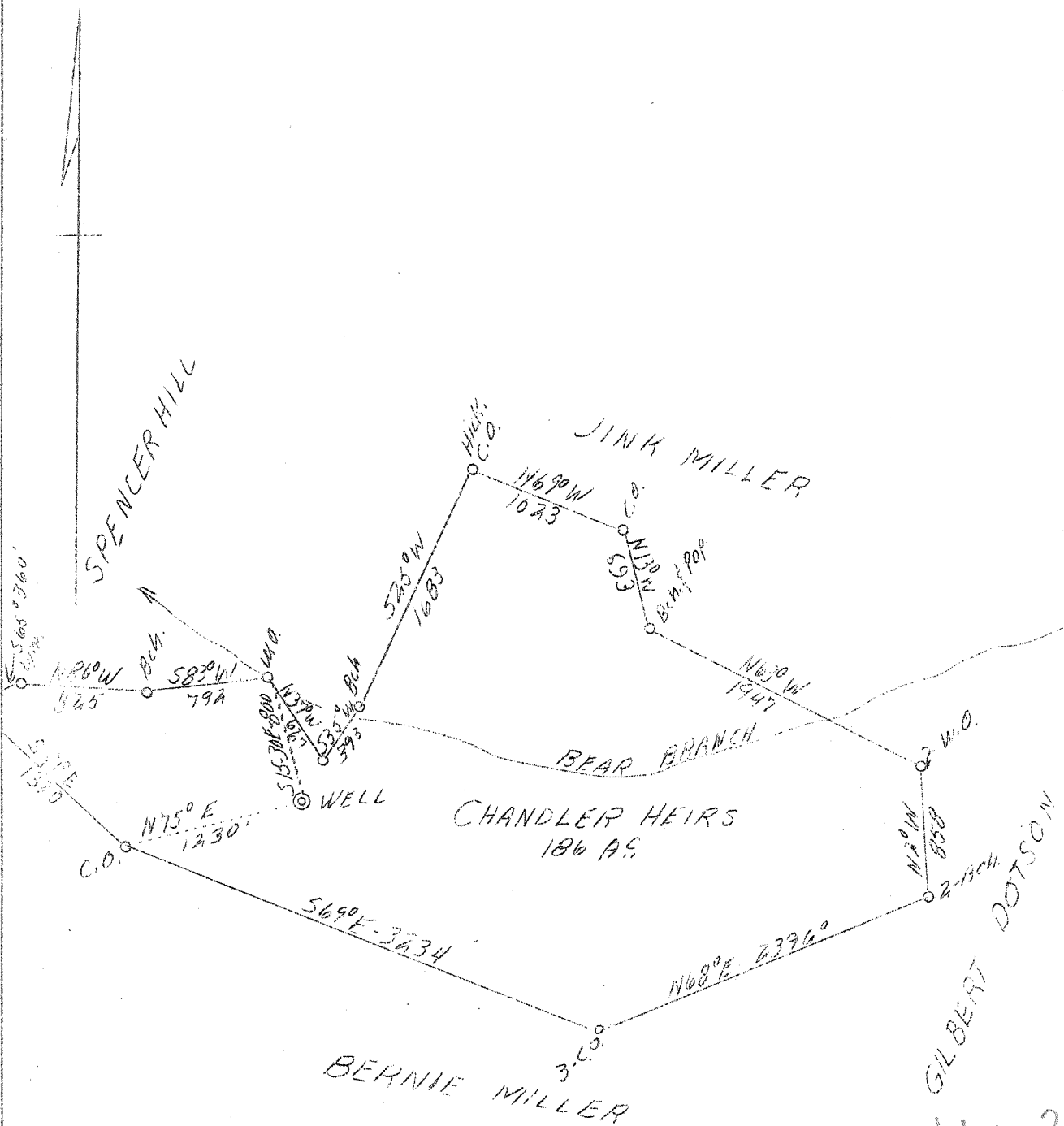


LATITUDE 38° 10'

LONGITUDE 82° 00'



W-12
S-2.9

ABD.

Company	Kanawha Gas & Utilities Co.
Address	Hamlin, W. Va.
Farm	Chandler Heirs
Tract	1
Acres	186
Well (Farm) No.	3
Elevation (SL)	893
Quadrangle	Midkiff
County	Lincoln
District	Jefferson
Engineer	S. V. Haworth
Eng. Reg. No.	224
Date	Aug. 29, 1939
Scale	1" = 1000'

STATE OF WEST VIRGINIA
Department of Mines
OIL & GAS DIVISION
Charleston

WELL LOCATION MAP

File No. L10-201-A

x Denotes location of well on U. S. Topographic Maps, scale 1 to 62,500, latitude and longitude lines being represented by border lines as shown.

- Denotes one inch spaces on border line of original tracing.

123
62
164
128
95
(85)
15
12