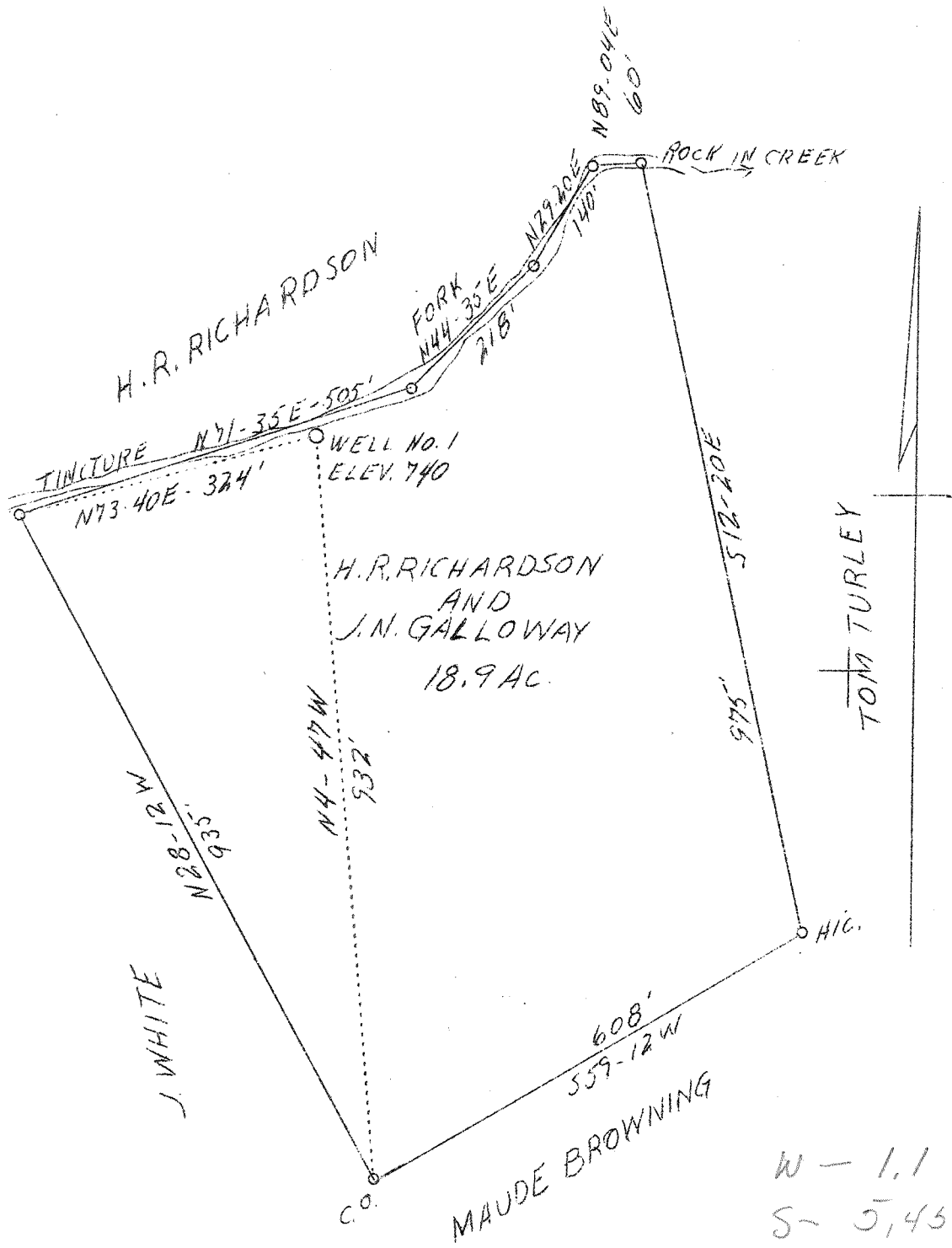


LATITUDE 38° 20'

LONGITUDE 82° 05'



ABD.

Company Kanawha Gas & Utilities Co.  
 Address Hamlin, W. Va.  
 Farm H. R. Richardson & J. N. Galloway  
 Tract 2  
 Acres 18.9  
 Well (Farm) No. 1  
 Elevation (SL) 740  
 Quadrangle Milton S.  
 County Lincoln  
 District Carroll  
 Engineer S. V. Haworth  
 Eng. Reg. No. 224  
 Date June 22, 1939  
 Scale 1" = 200'

STATE OF WEST VIRGINIA  
 Department of Mines  
 OIL & GAS DIVISION  
 Charleston

WELL LOCATION MAP

File No. 611-196-A

x Denotes location of well on U. S. Topographic Maps, scale 1 to 62,500, latitude and longitude lines being represented by border lines as shown.

- Denotes one inch spaces on border line of original tracing.