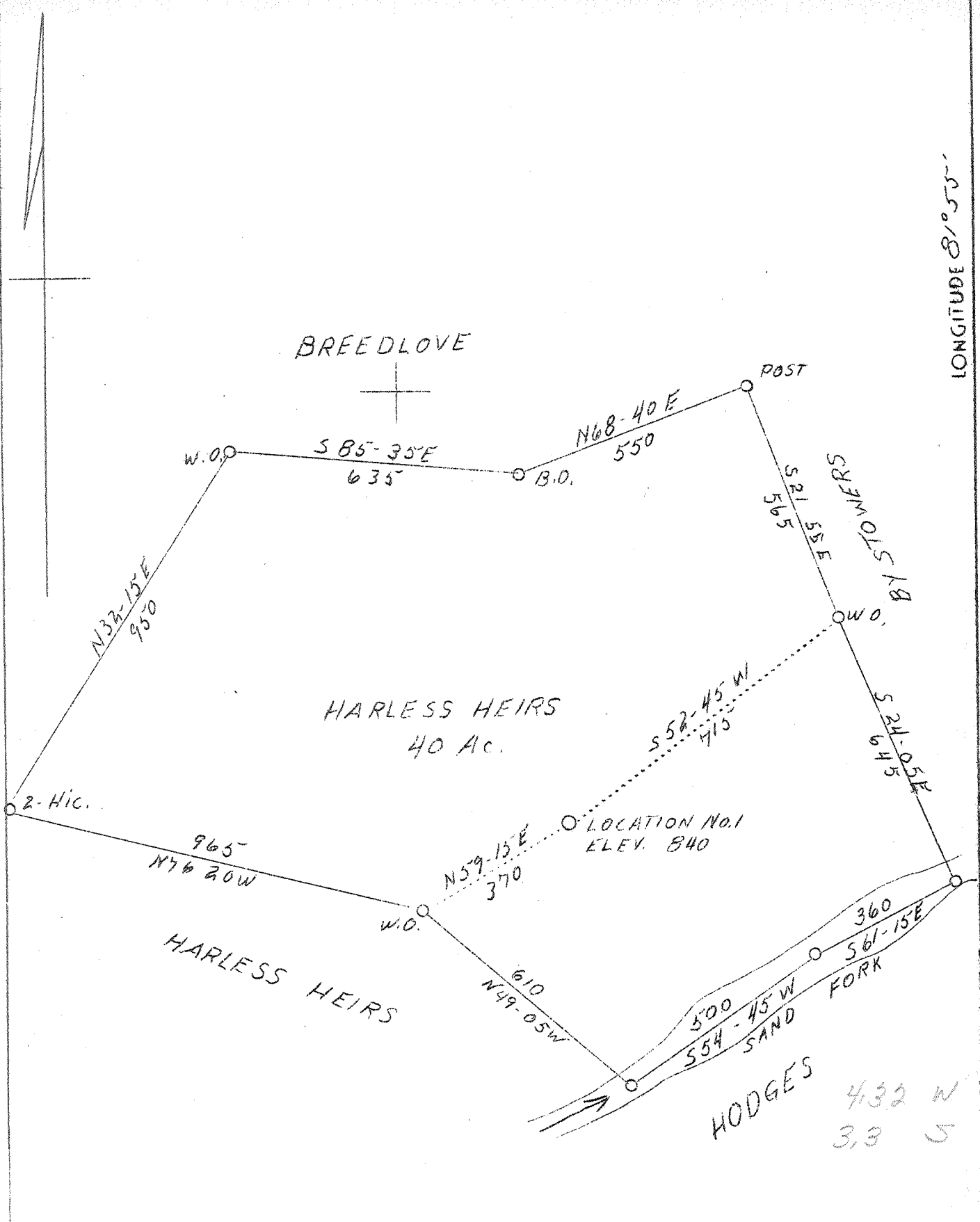


LATITUDE 38° 15'

LONGITUDE 81° 55'



F.B.D.

Company	Kanawha Gas & Utilities Co.
Address	Hamlin, W. Va.
Farm	Harless Heirs
Tract	1
Acres	40
Well (Fam) No.	1
Elevation (SL)	840
Quadrangle	Madison
County	Lincoln
District	Duval
Engineer	S. V. Haworth
Eng. Reg. No.	224
Date	March 3, 1939
Scale	1" - 300'

STATE OF WEST VIRGINIA  
 Department of Mines  
 OIL & GAS DIVISION  
 Charleston

WELL LOCATION MAP

File No. LIN-188-A

x Denotes location of well on U. S. Topographic Maps, scale 1 to 62,500, latitude and longitude lines being represented by border lines as shown.

- Denotes one inch spaces on border line of original tracing.