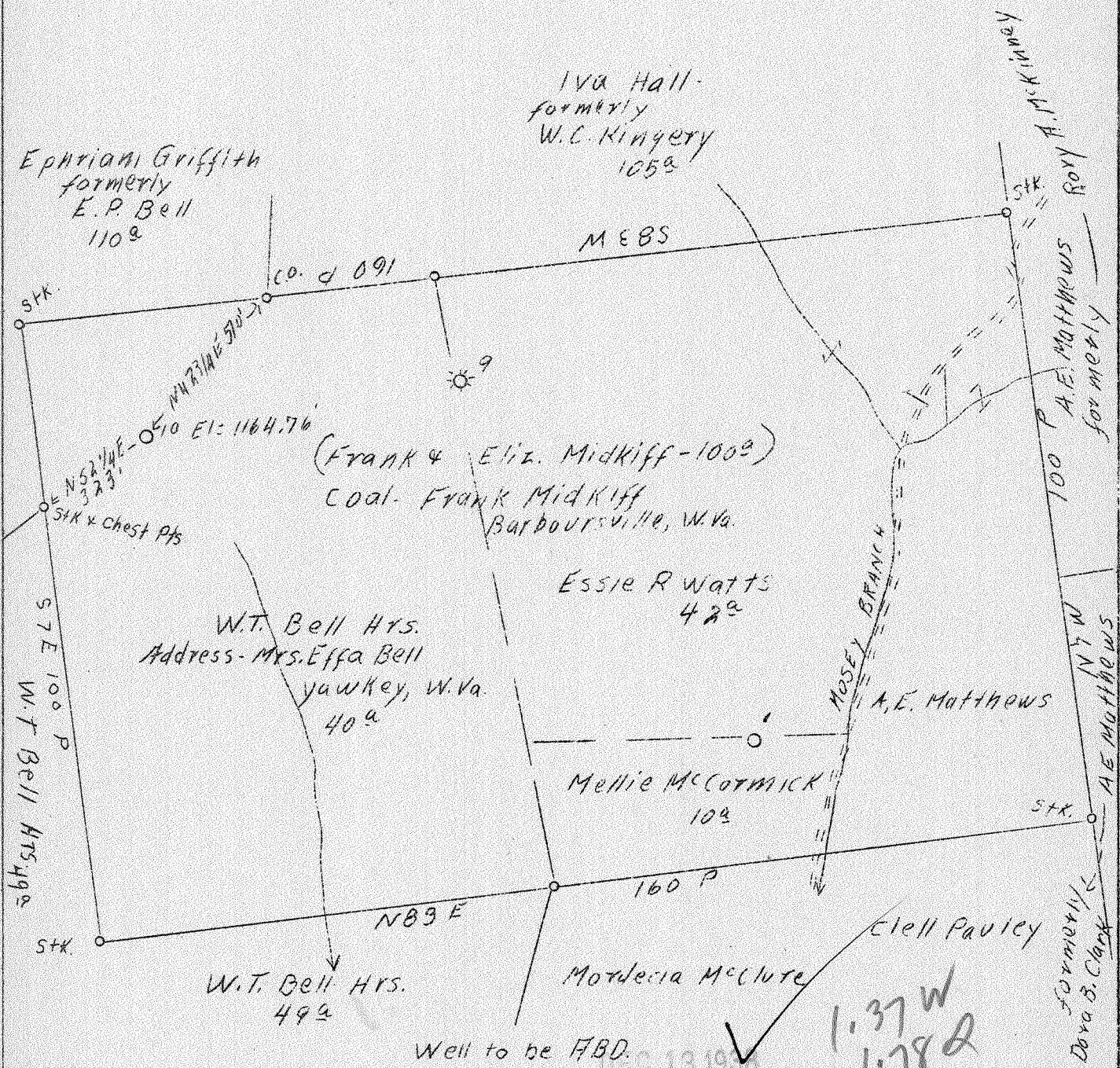


LATITUDE 38° 15'

LONGITUDE 81° 55'



Company	South Penn Oil Co.
Address	411 Seventh Ave., Pittsburgh, Pa.
Farm	F.M. Midkiff
Acres	100
Lease No.	71102
Well (Farm) No.	10
Quadrangle	Madison
County	Lincoln
District	Duval
Eng.	E.C. Tabler
Date	11/1/38
Scale	1" = 400'

STATE OF WEST VIRGINIA  
 Department of Mines  
 OIL AND GAS DIVISION  
 Charleston

WELL LOCATION MAP

File No. LIN-186-A

x Denotes location of well on U.S. Topographic maps, scale 1 to 62,500, latitude and longitude lines being represented by border lines as shown.

- Denotes one inch spaces on border line of original tracing.

WEST VIRGINIA DEPARTMENT OF MINES  
OIL AND GAS DIVISION

500

WELL RECORD

Permit No. AP-186-A

Oil or Gas Well OIL  
(Kind)

Company South Penn Oil Company  
 Address All Seventh Ave., Pittsburgh, Pa.  
 Farm F. M. Midkiff Acres 100  
 Location (waters) Porter Fork  
 Well No. 10 Elev. 1164.76  
 District Duval County Lincoln  
 The surface of tract is owned in fee by W. T. Bell Heirs  
c/o Mrs. Effa Bell Address Yawkey, W. Va.  
 Mineral rights are owned by F. M. Midkiff et al  
Rte #2, Box 70 A Address Huntington, W. Va.  
 Drilling commenced Dec. 21, 1911,  
 Drilling completed Feb. 16, 1912,  
 Date shot 2-19-12 Depth of shot - -  
 Open Flow /10ths Water in - - Inch  
 /10ths Merc. in - - Inch  
 Volume - - Cu. Ft.  
 Rock Pressure - - lbs. - - hrs.  
 Oil 15 bbls., 1st 24 hrs.  
 Fresh water 560 feet - feet  
 Salt water 1330 feet - feet

Casing and Tubing	Used in Drilling	Left in Well	Packers
Size			Kind of Packer
16			-
13			-
10	16'		Size of
8 1/4			-
6 5/8	1970'		Depth set
5 3/16	2032'		-
3			Perf. top
2			Perf. bottom
Liners Used			Perf. top
			Perf. bottom

CASING CEMENTED - SIZE - No. FT. - Date -  
 COAL WAS ENCOUNTERED AT 560 FEET 60 INCHES  
710 FEET 60 INCHES 1120 FEET 48 INCHES  
- FEET - INCHES - FEET - INCHES

Formation	Color	Hard or Soft	Top	Bottom	Oil Gas or Water	Depth Found	Remarks
Clay				16			
Sand			16	25			
Slate			25	75			
Sand			75	85			
Slate			85	125			
Lime			125	140			
Slate			140	440			
Sand			440	465			
Slate			465	500			
Sand			500	560			
Coal (?)			560	565			
Slate			565	580	Water	560	
Sand			580	680			
Slate			680	710			
Coal			710	715			
Sand			715	790			
Slate			790	865			
Sand			865	940			
Slate			940	1000			
Sand			1000	1050			
Slate			1050	1100			
Sand			1100	1120			
Coal (?)			1120	1124			
Slate & Sand			1124	1260			
Salt Sand			1260	1900	Water	1330	
Little Lime			1912	1952			
Pencil Cave			1952	1955			
Big Lime			1955	2140			
Injun			2140	2210			
Slate			2210	2290			
Shells			2290	2375			
Slate & Shells			2375	2637			
Sand			2637	2657			
Total Depth				2657			

