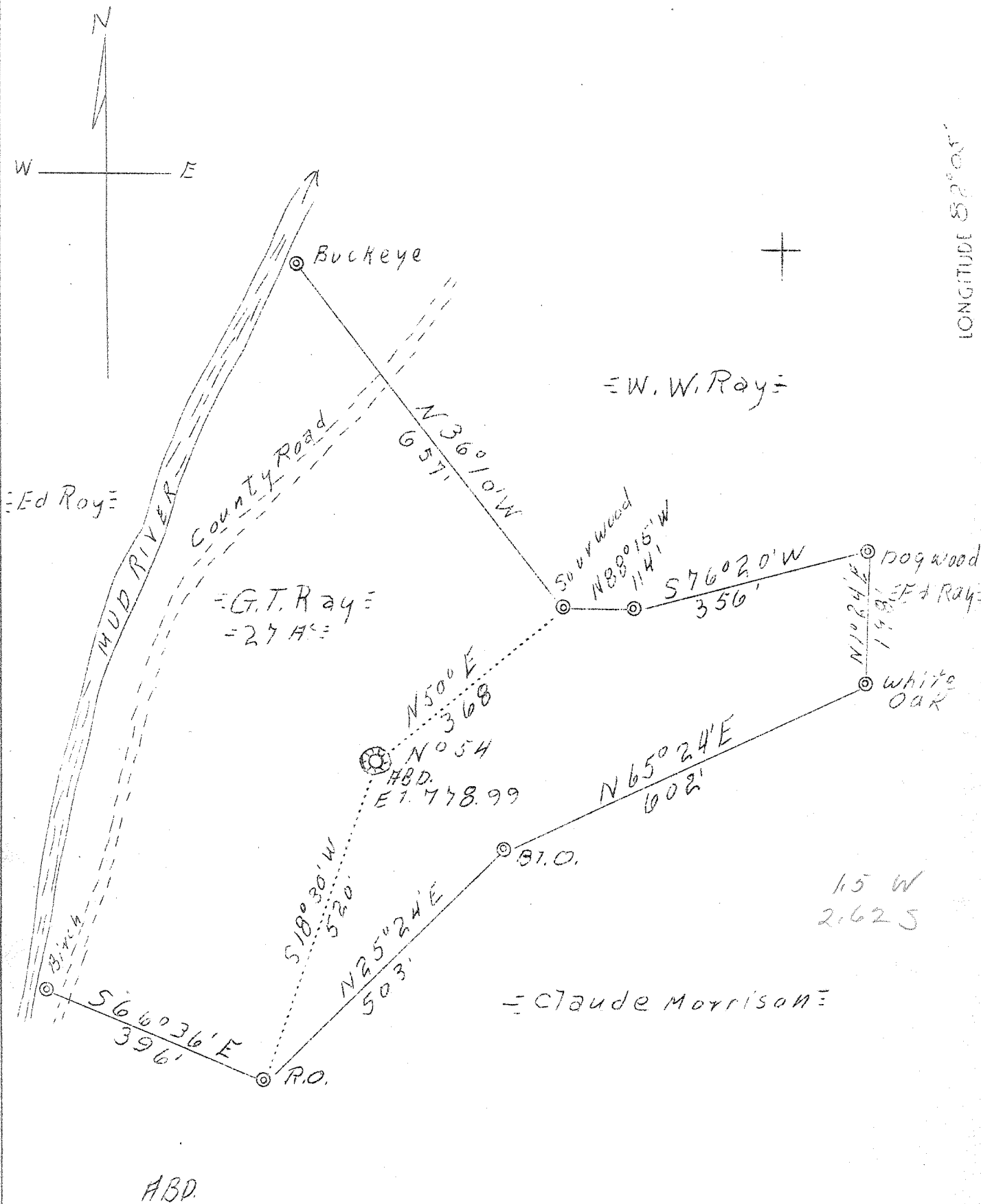


LATITUDE 38°15'

LONGITUDE 82°05'



Company Blue Ridge Gas Co.
 Address 303 Union Bldg.,
 Charleston, W. Va.
 Farm G. T. Ray
 Acres 27
 Lease No. 5
 Well, (Farm) No. -
 Serial No. 54
 Elevation (SP) 778.99
 Quadrangle Midkiff *N.C.*
 County Lincoln
 District Carroll
 Engineer W. T. Watts S.L.C.
 Eng. Reg. No. -
 Date Sept. 28, 1938
 Scale 1" - 200'

STATE OF WEST VIRGINIA
 Department of Mines
 OIL & GAS DIVISION
 Charleston

WELL LOCATION MAP
 File No. L111-170-A

x Denotes location of well on U. S. Topographic Maps, scale 1 to 62,500, latitude and longitude lines being represented by border lines as shown.
 - Denotes one inch spaces on border line of original tracing.