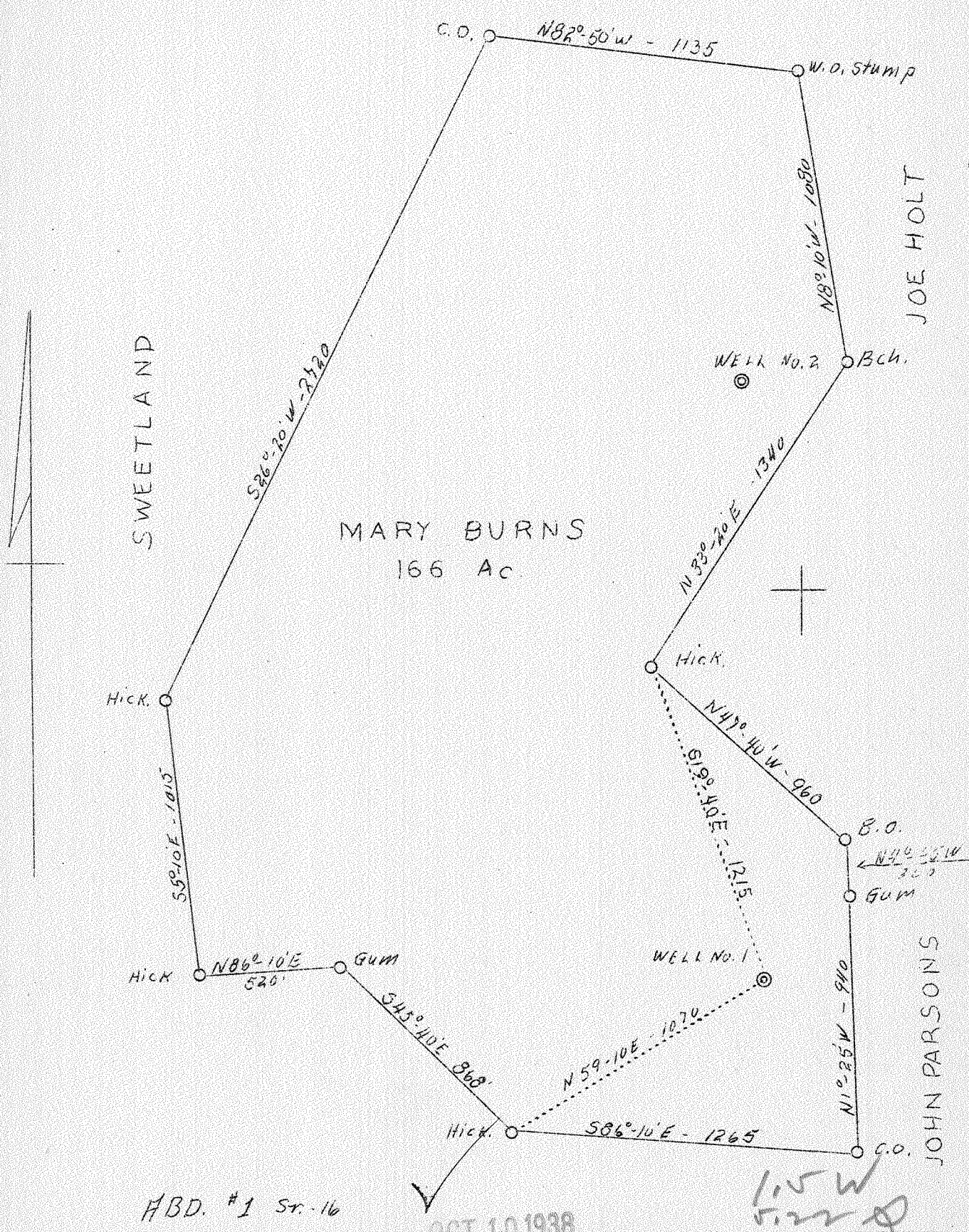


LATITUDE 38° 20'

LONGITUDE 82° 05'



Company Sweetland Land & Mineral Co.  
 Address Hamlin, W. Va.  
 Farm Mary Burns  
 Tract One  
 Acres 166  
 Well (Farm) No. One  
 Elevation (SP) 820  
 Quadrangle Milton  
 County Lincoln  
 District Carroll  
 Engineer S. V. Haworth  
 Eng. Reg. No. 224  
 Date Sept. 26, 1938  
 Scale 1" = 500'

STATE OF WEST VIRGINIA  
 Department of Mines  
 OIL & GAS DIVISION  
 Charleston

WELL LOCATION MAP  
 File No. Lin-168-A

x Denotes location of well on U. S. Topographic Maps, scale 1 to 62,500, latitude and longitude lines being represented by border lines as shown.

- Denotes one inch spaces on border line of original tracing.

168A

Carroll District, Lincoln County, W. Va.  
 By Lewis R. Sweetland, Hamlin, W. Va.  
 On Mud River.

Elevation.....

Drilling commenced Feb. 7, 1927; completed, March 18, 1927.

Shot March 14, 1927.

Open flow, 4/10ths Merc. in 2".

10" casing, 16'; 6<sup>5</sup>/<sub>8</sub>"", 146'; 5<sup>3</sup>/<sub>16</sub>"", 1690'.

Packer, set at 1850'.

Coal was encountered at 260-268'.

Gas well. Abandonment reported to Dept. of Mines (1938) (not dated).

Record to ROT from Mrs. Griffith Sept. 22, 1938.

	Top.	Bottom.
Surface	0	15
Sand	15	40
Slate	40	100
Sand	100	130
Slate	130	225
Sand	225	250
Slate	250	260
Coal	260	268
Slate	268	325
Sand	325	450
Slate	450	545
Sand	545	665
Slate and shells	665	735
Slate	735	800
Lime shells	800	830
Salt Sand	830	1000
Slate	1000	1025
Sand	1025	1200
Slate	1200	1260
Sand	1260	1300
Slate	1300	1335
Sand	1335	1360
Slate	1360	1377
Red rock	1377	1380
<del>Red rock</del>	<del>1377</del>	<del>1380</del>
Slate	1380	1405
Little Lime	1405	1430
Pencil Cave	1430	1435
Big Lime	1435	1615
Slate and shells	1615	1625
Red rock	1625	1630
Big Injun Sand	1630	1670
Slate and shells	1670	1700
Slate	1700	1800
Slate and shells	1800	1835
Shells (set tubing with packer at 1851')	1835	2120
Brown shale	2120	2130
Berea Sand (gas, 2132-2147')	2130	2150
Total depth		2165

WEST VIRGINIA DEPARTMENT OF MINES  
OIL AND GAS DIVISION

490

WELL RECORD

168-A

Permit No. LIN- Oil or Gas Well (Kind)

Company Lewis R. Sweetland  
 Address Hanlin, West Virginia  
 Farm John Burns Acres  
 Location (waters) Mud River  
 Well No. 16 Elev.  
 District Carroll County Lincoln  
 The surface of tract is owned in fee by  
 Address  
 Mineral rights are owned by  
 Address  
 Drilling commenced 2/7/27  
 Drilling completed 3/18/27  
 Date shot March 14, 1927 Depth of shot  
 Open Flow /10ths Water in Inch  
 4 /10ths Merc. in 2" Inch  
 Volume Cu. Ft.  
 Rock Pressure lbs hrs.  
 Oil bbls., 1st 24 hrs.  
 Fresh water feet feet  
 Salt water feet feet

Casing and Tubing	Used in Drilling	Left in Well	Packers
Size			Kind of Packer
16			
13			
10	16'		Size of
8 1/4			
6 5/8	146'		Depth set 1850'
5 3/16	1690'		
3			Perf. top
2			Perf. bottom
Liners Used			Perf. top
			Perf. bottom

CASING CEMENTED SIZE No. FT. Date  
 COAL WAS ENCOUNTERED AT 260' FEET 96" INCHES  
 FEET INCHES FEET INCHES  
 FEET INCHES FEET INCHES

Formation	Color	Hard or Soft	Top	Bottom	Oil Gas or Water	Depth Found	Remarks
Surface			0	15			
Sand			15	40			
Slate			40	100			
Sand			100	130			
Slate			130	225			
Sand			225	250			
Slate			250	260			
Coal			260	268			
Slate			268	325			
Sand			325	450			
Slate			450	545			
Sand			545	665			
Slate and Shells			665	735			
Slate			735	800			
Lime Shells			800	830			
Salt Sand			830	1000			
Slate			1000	1025			
Sand			1025	1200			
Slate			1200	1260			
Sand			1260	1300			
Slate			1300	1335			
Sand			1335	1360			
Slate			1360	1377			
Red Rock			1377	1380			
Red Rock			1377	1380			
Slate			1380	1405			
Little Lime			1405	1430			
Pencil Cave			1430	1435			
Big Lime			1435	1615			
Slate & Shells			1615	1625			
Red Rock			1625	1630			
Big Injun Sand			1630	1670			
Slate & Shells			1670	1700			
Slate			1700	1800			
Slate & Shells			1800	1835			
Shells			1835	2120			Set tubing with packer at 1851'
Brown Shale			2120	2130			
Berea Sand			2130	2150			Gas 2132-2147'
Total Depth							2165

(Over)

SEP 22 1938