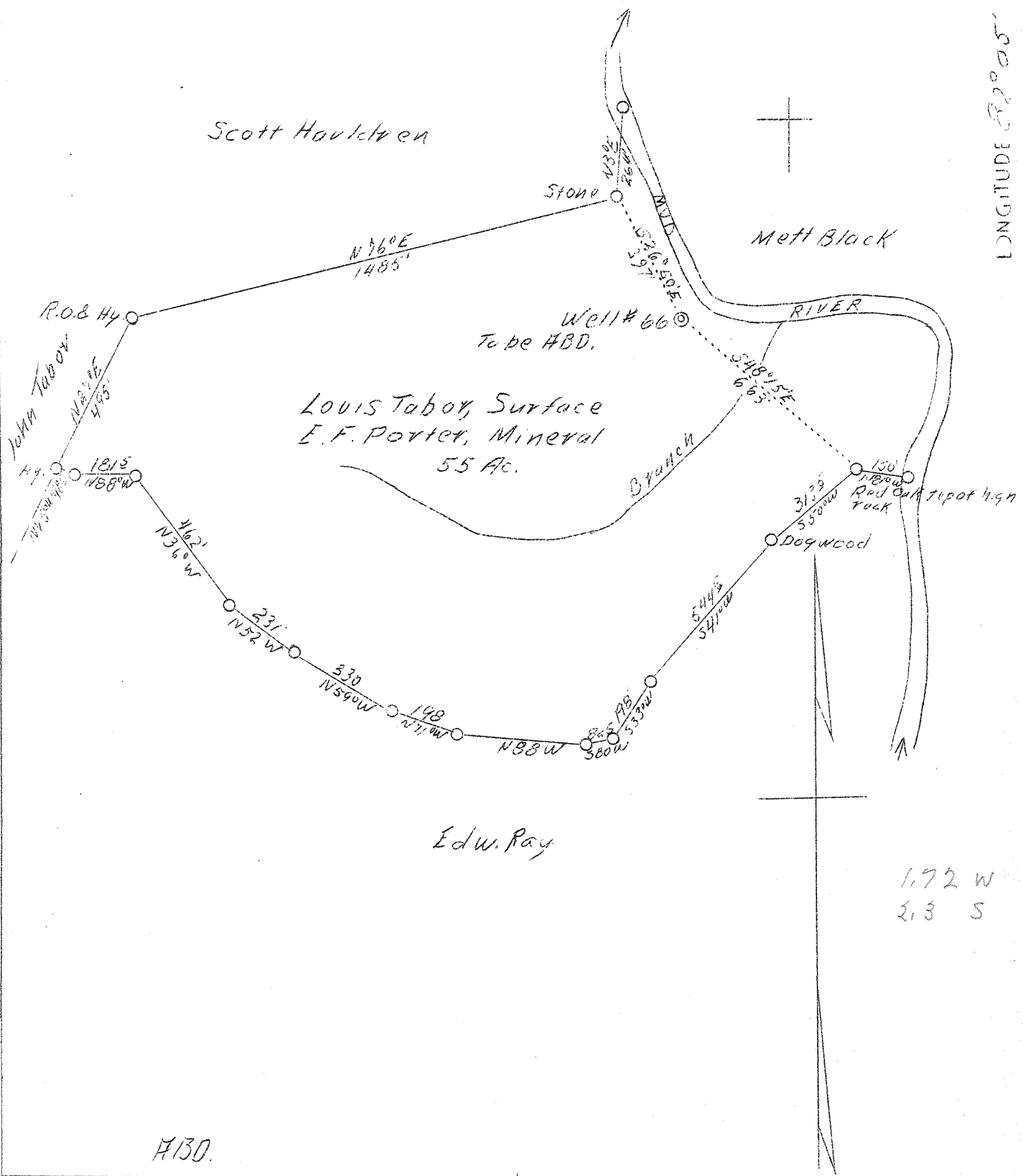


LATITUDE 38° 15'

LONGITUDE 82° 05'



A130.

Company	Kanawha Gas & Utilities Co.
Address	Hamlin, W. Va.
Farm	Louis Tabor
Tract	One
Acres	55
Well (Farm) No.	One
Serial No.	66
Elevation (SP)	675
Quadrangle	Midkiff
County	Lincoln
District	Carroll
Engineer	G. C. Ewing
Eng. Reg. No.	309
Date	Sept. 14, 1938
Scale	1" = 400'

STATE OF WEST VIRGINIA
Department of Mines
OIL & GAS DIVISION
Charleston

WELL LOCATION MAP
File No. L14-166-A

x Denotes location of well on U. S. Topographic Maps, scale 1 to 62,500, latitude and longitude lines being represented by border lines as shown.

- Denotes one inch spaces on border line of original tracing.