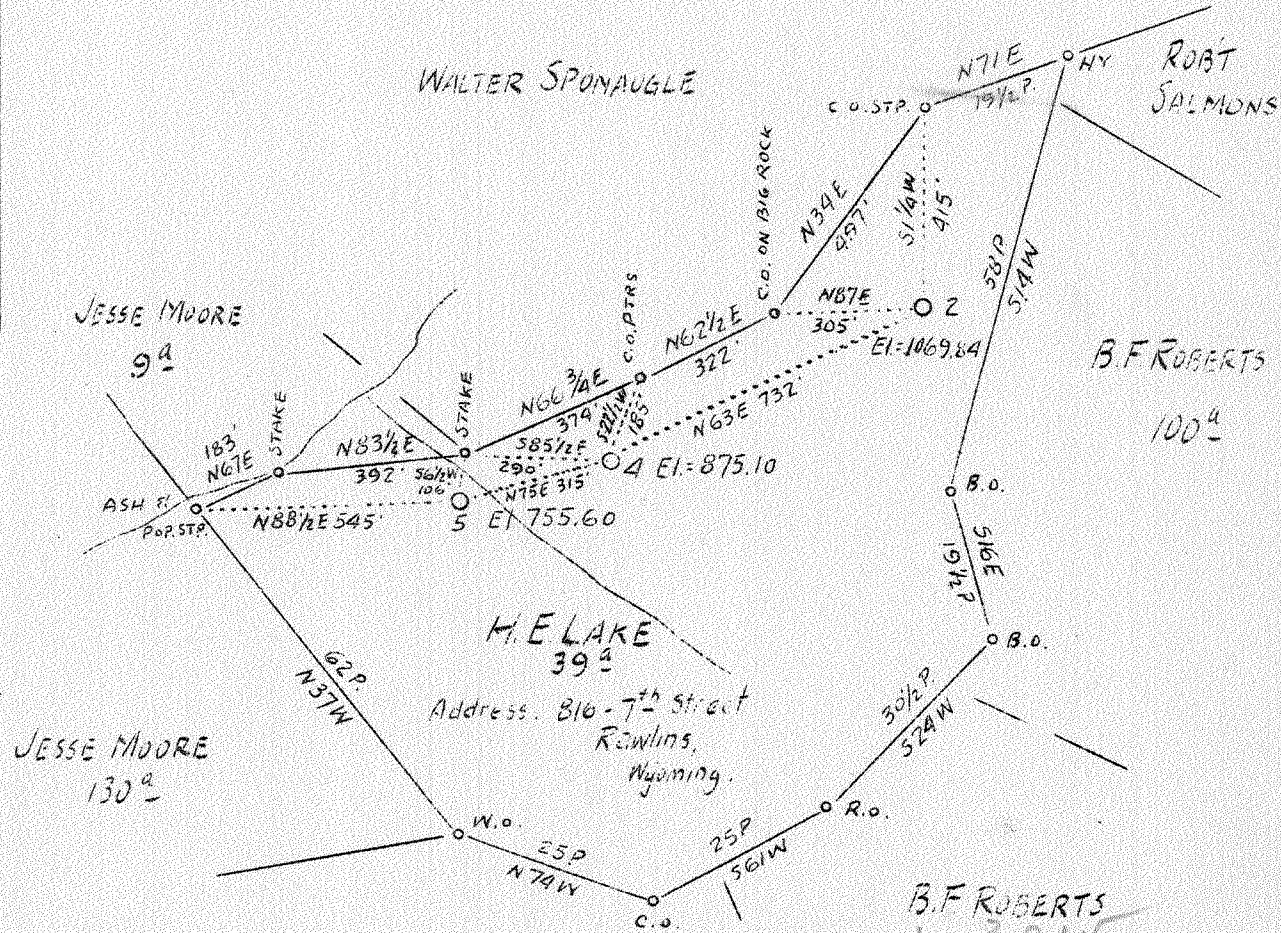


LATITUDE 38° 20'

LONGITUDE 82° 00'

+++



No Coal

ROBERT SALMONS
AUG 22 1938
WELL TO BE ABANDONED

#2	3.2W
#4	2.82W
#5	3.42W
	2.91W
	3.63W
	2.91W

Company South Penn Oil Co.
 Address 411-7th Ave., Pittsburgh, Pa.
 Farm H. E. Lake
 Acres 38
 Lease No. 75067
 Well (Farm) No. 2 - 4 - 5
 Quadrangle Milton
 County Lincoln
 District Carroll
 Engineer E. C. Tabler
 Eng. Reg. No. -
 Date August 15, 1938
 Scale 1" = 400'

STATE OF WEST VIRGINIA
 Department of Lines
 OIL & GAS DIVISION
 Charleston

WELL LOCATION MAP
 File No. LIN 156 A (2)
 LIN 157 A (4)
 LIN 158 A (5)

x Denotes location of well on U. S. Topographic Maps, scale 1 to 62,500, latitude and longitude lines being represented by border lines as shown.
 - Denotes one inch spaces on border line of original tracing.

158A

Carroll District, Lincoln County, W. Va.
 By South Penn Oil Co., 411 Seventh Ave., Pittsburgh, Pa.
 On 38 acres, on Mud River.
 Elevation, 755.60' L.
 Surface owned by H. E. Lake, 816 Seventh St., Rawlins, Wyoming,
 and minerals by A. F. Morris et al., Hamlin, W. Va.
 Drilling commenced Nov. 4, 1919; completed, Nov. 19, 1919.
 Shot Nov. 19, 1919.
 Oil, 5 bbls., 1st 24 hrs.
 8 1/4" casing, 20'; 6 3/8", 715'; all left in.
 Oil well. Abandonment reported to Dept. of Mines Aug. 17, 1938.
 Record to RCT from Mrs. Griffith Sept. 22, 1938.

	Top.	Bottom.
Top Sand	838 -
(top oil pay, 852 1/2'; bottom oil pay, 862 1/2')		
Bottom Sand-	863
Slate	863 -	864 1/2
Total depth		864 1/2

WEST VIRGINIA DEPARTMENT OF MINES
OIL AND GAS DIVISION

493

WELL RECORD

Permit No. WFA

Oil or Gas Well OIL
(Kind)

Company SOUTH PENN OIL COMPANY
 Address 411 Seventh Ave., Pittsburgh, Pa.
 Farm H. E. Lake Acres 38
 Location (waters) Mud River
 Well No. 5 Elev. 755.60'
 District Carroll County Lincoln
 The surface of tract is owned in fee by H. E. Lake
816 - 7th St., Address Rawlins, Wyoming
 Mineral rights are owned by A. F. Morris et al
 Address Hamlin, W. Va.
 Drilling commenced November 4, 1919
 Drilling completed November 19, 1919
 Date shot 11-19-19 Depth of shot -
 Open Flow /10ths Water in - Inch
 /10ths Merc. in - Inch
 Volume - Cu. Ft.
 Rock Pressure - lbs. - hrs.
 Oil 5 bbls., 1st 24 hrs.
 Fresh water - feet - feet
 Salt water - feet - feet

Casing and Tubing	Used in Drilling	Left in Well	Packers
Size			
16			Kind of Packer <u>-</u>
13			<u>-</u>
10			Size of <u>-</u>
8 1/4	<u>20</u>		<u>-</u>
6 5/8	<u>715</u>		Depth set <u>-</u>
5 3/16			<u>-</u>
3			Perf. top <u>-</u>
2			Perf. bottom <u>-</u>
Liners Used			Perf. top <u>-</u>
			Perf. bottom <u>-</u>

CASING CEMENTED - SIZE - No. FT. - Date -
 COAL WAS ENCOUNTERED AT - FEET - INCHES
- FEET - INCHES - FEET - INCHES
- FEET - INCHES - FEET - INCHES

Formation	Color	Hard or Soft	Top	Bottom	Oil Gas or Water	Depth Found	Remarks
Top Sand				838			
					Top oil pay	852 1/8	
					Bottom oil pay	862 1/8	
Bottom Sand				863			
Slate			863	864 1/8			
Total Depth				864 1/8			

