

Bottom Hole Long. = 81°58' 11.3"

Longitude = 81°58' 09.01"

3,110'

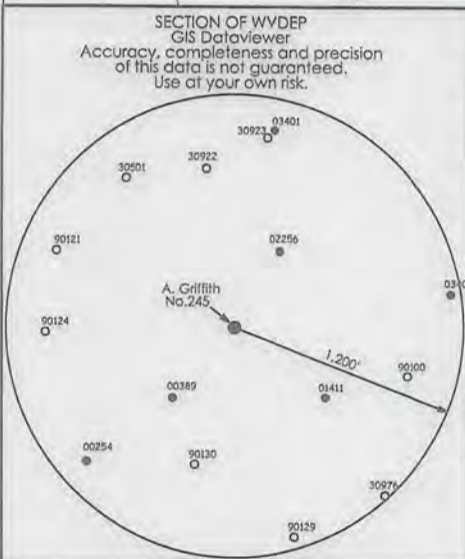
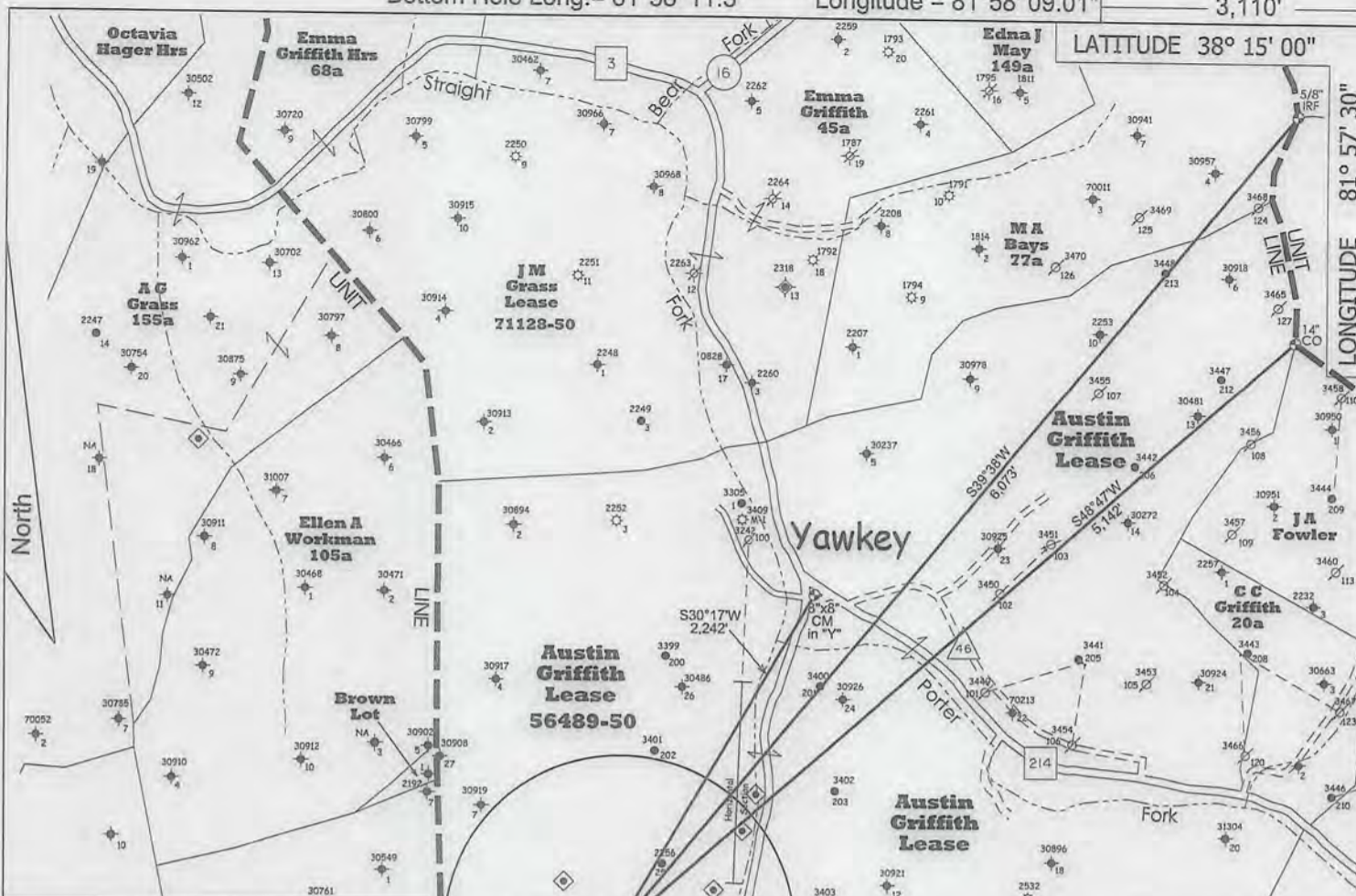
LATITUDE 38° 15' 00"

LONGITUDE 81° 57' 30"

11,165'

Latitude = 38° 13' 09.65"

Bottom Hole Lat. = 38° 13' 05.9"





Well Coordinates	
UTM (NAD83) - Meters	
Surface	Bottom Hole
N - 4,230,607	N - 4,230,491
E - 415,175	E - 415,118

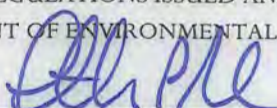
Location References	
(Magnetic Bearing - Slope Dist.)	
N52°E 112' 4" Poplar	
N35°W 73' 3" Gum	

- NOTES ON SURVEY**
- Well ties and Latitude and Longitude were measured by DGPS (Sub-meter Mapping Grade). Bearings are referenced to UTM Grid North (Zone 17 North - NAD 1927).
  - Latitude/Longitude shown are NAD 1927 values.
  - Surface owner information obtained from the Lincoln County Assessor's tax records.

 - DENOTES A POSSIBLE WATER SUPPLY SOURCE LOCATED FROM CIRCA 2003 AERIAL PHOTOGRAPHY - NOT BY SURVEY. OTHER SOURCES MAY BE PRESENT.  
 - DENOTES LOCATION OF WELL ON UNITED STATES TOPOGRAPHIC MAPS.

FILE NO. 273  
 SCALE 1" = 1000'  
 MINIMUM DEGREE OF ACCURACY Sub-Meter  
 PROVEN SOURCE OF ELEVATION DGPS Survey  
(Sub-Meter Mapping Grade)

I, THE UNDERSIGNED, HEREBY CERTIFY THAT THIS PLAT IS CORRECT TO THE BEST OF MY KNOWLEDGE AND BELIEF AND SHOWS ALL THE INFORMATION REQUIRED BY LAW AND THE REGULATIONS ISSUED AND PRESCRIBED BY THE DEPARTMENT OF ENVIRONMENTAL PROTECTION.

(SIGNED)   
 TIMOTHY P. ROUSH PS 793



WEST VIRGINIA  
 Division of Environmental Protection  
 Office of Oil and Gas  
 601 57th Street  
 Charleston, West Virginia 25301


WELL TYPE: OIL  GAS  LIQUID INJECTION  WASTE DISPOSAL   
 (IF "GAS") PRODUCTION  STORAGE  DEEP  SHALLOW   
 LOCATION: ELEVATION 867' WATERSHED Straight Fork  
 DISTRICT Duval COUNTY Lincoln  
 QUADRANGLE Griffithsville 7.5'  
 SURFACE OWNER Crever Saul Estate ACREAGE 65.40 Ac.  
 OIL & GAS ROYALTY OWNER HG Energy, LLC., et al LEASE ACREAGE 375 Ac.  
 LEASE NO. 56489-50

PROPOSED WORK: DRILL  CONVERT  DRILL DEEPER  REDRILL  FRACTURE OR  
 STIMULATE  PLUG OFF OLD FORMATION  PERFORATE NEW  
 FORMATION  OTHER PHYSICAL CHANGE IN WELL (SPECIFY) \_\_\_\_\_

PLUG AND ABANDON  CLEAN OUT AND REPLUG   
 TARGET FORMATION Berea ESTIMATED DEPTH 3,002'

WELL OPERATOR HG Energy LLC. DESIGNATED AGENT Diane White  
 ADDRESS 5260 DuPont Road ADDRESS 5260 DuPont Road  
Parkersburg, WV 26101 Parkersburg, WV 26101

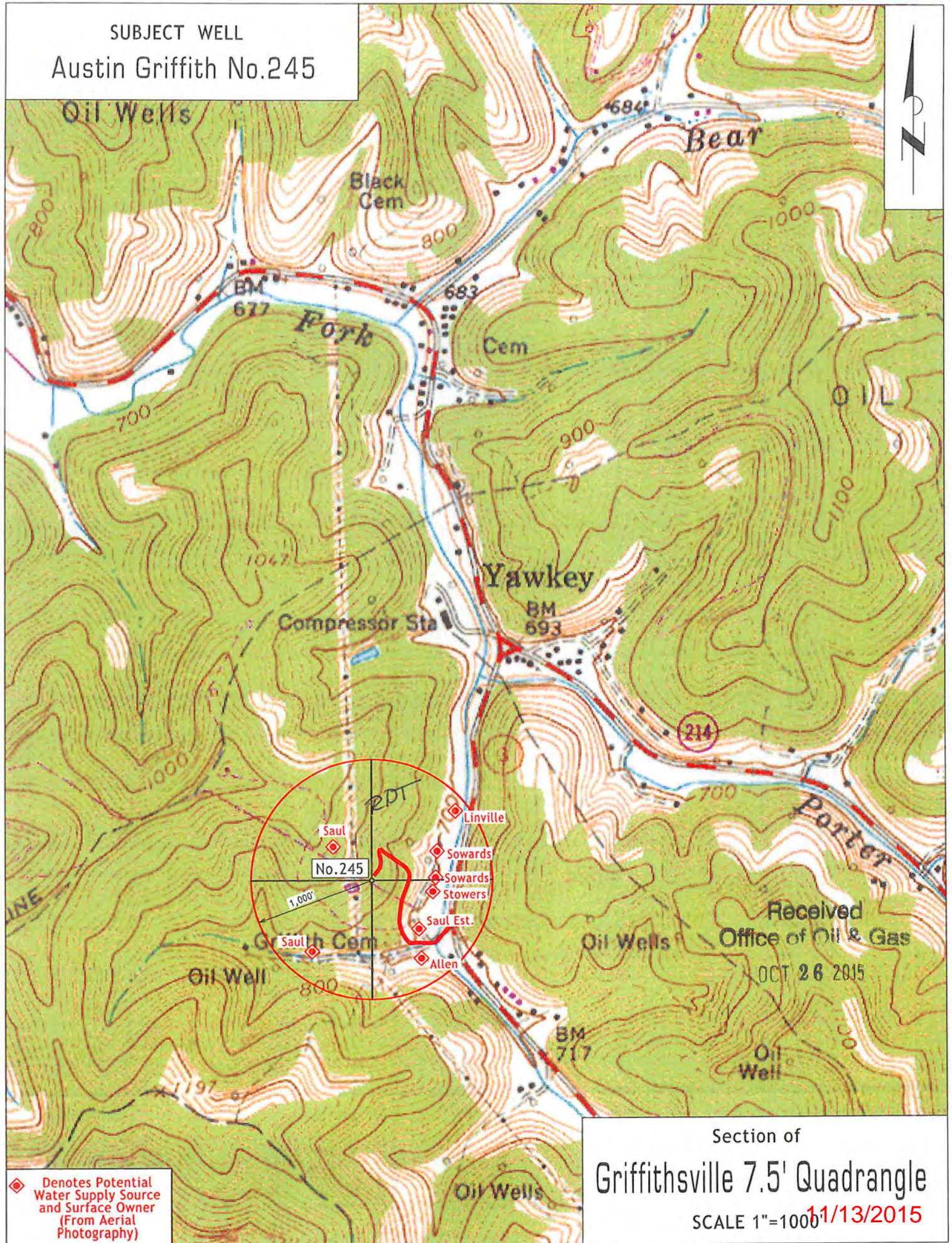
DATE August 20, 2015  
 FARM Austin Griffith No.245  
 API WELL NO. 47 - 043 - 03544



11/13/2015

FORM IV-6

SUBJECT WELL  
Austin Griffith No.245



Received  
Office of Oil & Gas  
OCT 26 2015

◆ Denotes Potential Water Supply Source and Surface Owner (From Aerial Photography)

Section of  
Griffithsville 7.5' Quadrangle  
SCALE 1"=1000' 11/13/2015