

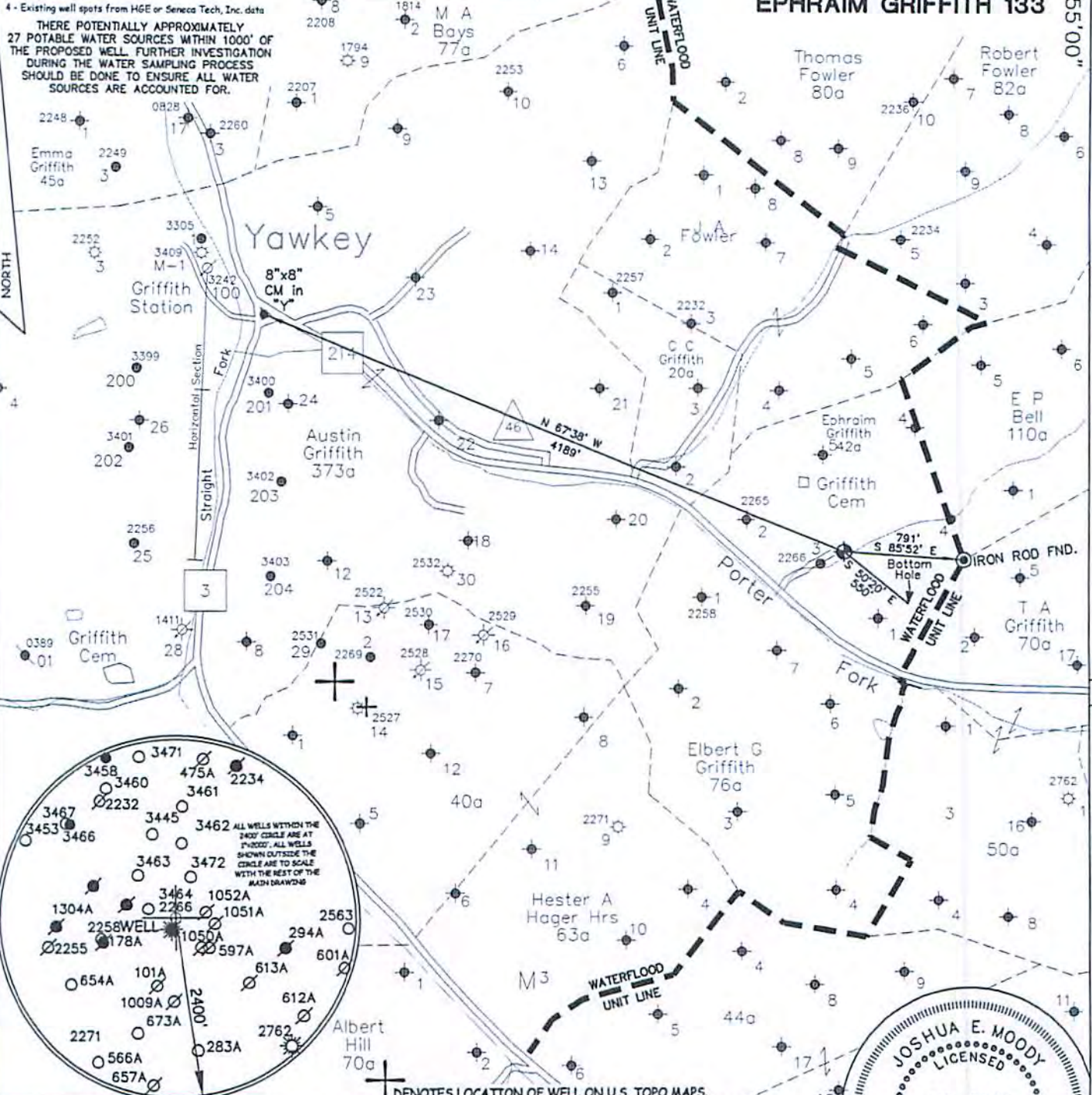
(BOT. HL: LON:-81°57'01.0") LON: -81°57'06.3" 10080' LAT:38°15'00" LON:81°55'00" 10770' LAT:38°13'13.6" (BOTTOM HOLE: LAT:38°13'10.1")

SURVEY NOTES

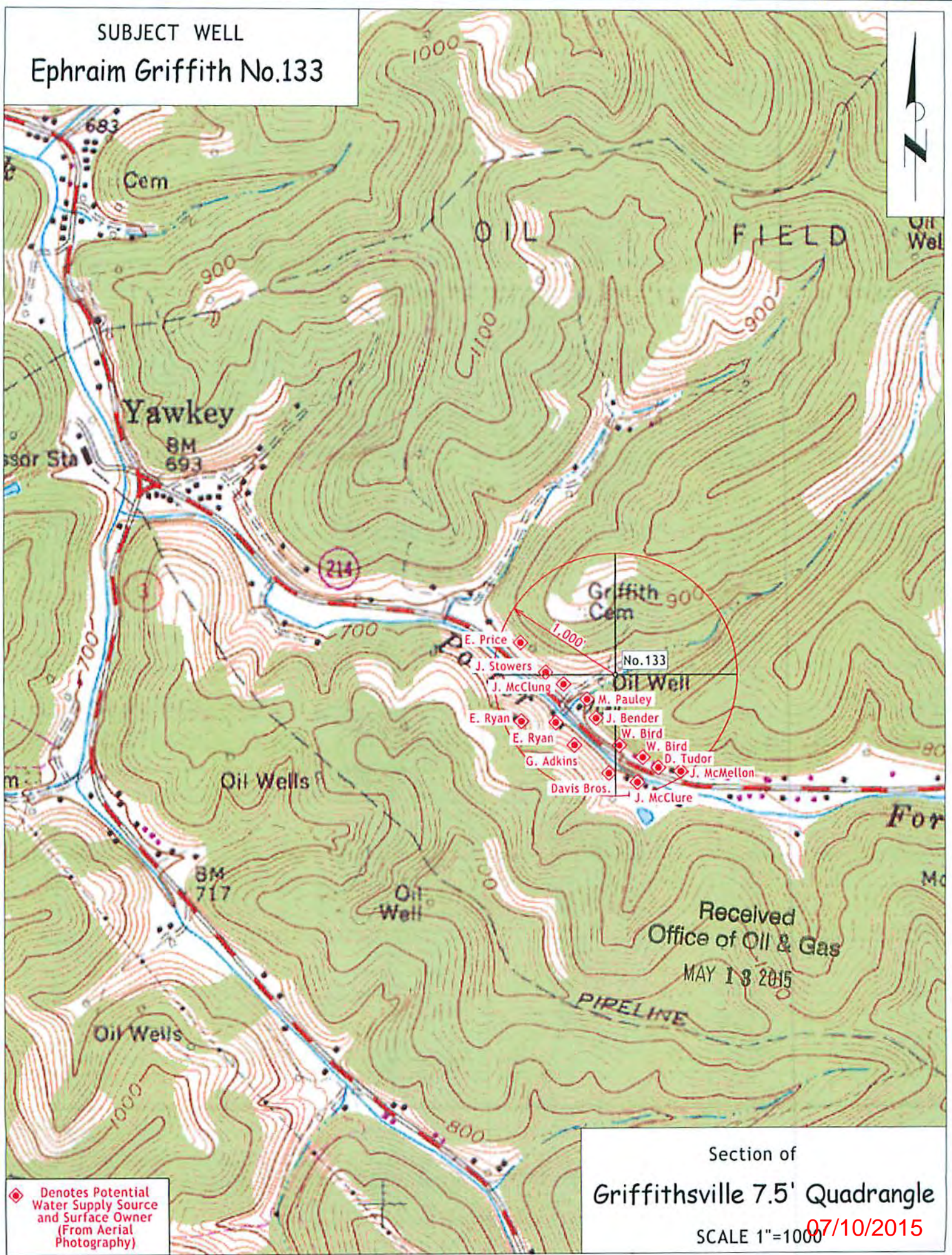
- 1 - Well ties and Latitude and Longitude were measured by DGPS (Sub-meter Mapping Grade). Bearings are referenced to UTM Grid North (Zone 17 North - NAD 1983).
- 2 - Surface owners and adjacent information obtained from the Lincoln County Assessor's tax records.
- 3 - No Title Opinion was provided to the Surveyor during this survey. This survey is subject to a complete Title Opinion.
- 4 - Existing well spots from HGE or Seneca Tech, Inc. data

UTM Coordinates (Zone 17N-NAD 1983)		LOCATION REFERENCES	
Surface	N-4,230,711m. E-416,701m.	MAGNETIC BEARING N13° E 65' SD DROP POLE N44° W 51' SD POWER POLE	
Bottom Hole	N-4,230,604m. E-416,830m.		

**MAP OF
H.G. ENERGY, LLC
-WATERFLOOD UNIT-
EPHRAIM GRIFFITH 133**



SUBJECT WELL
Ephraim Griffith No.133



◆ Denotes Potential Water Supply Source and Surface Owner (From Aerial Photography)

Section of
Griffithville 7.5' Quadrangle
SCALE 1"=1000
07/10/2015