

4303031P

Topo Quad: Alum Creek 7.5'

Scale: 1" = 2000'

County: Lincoln

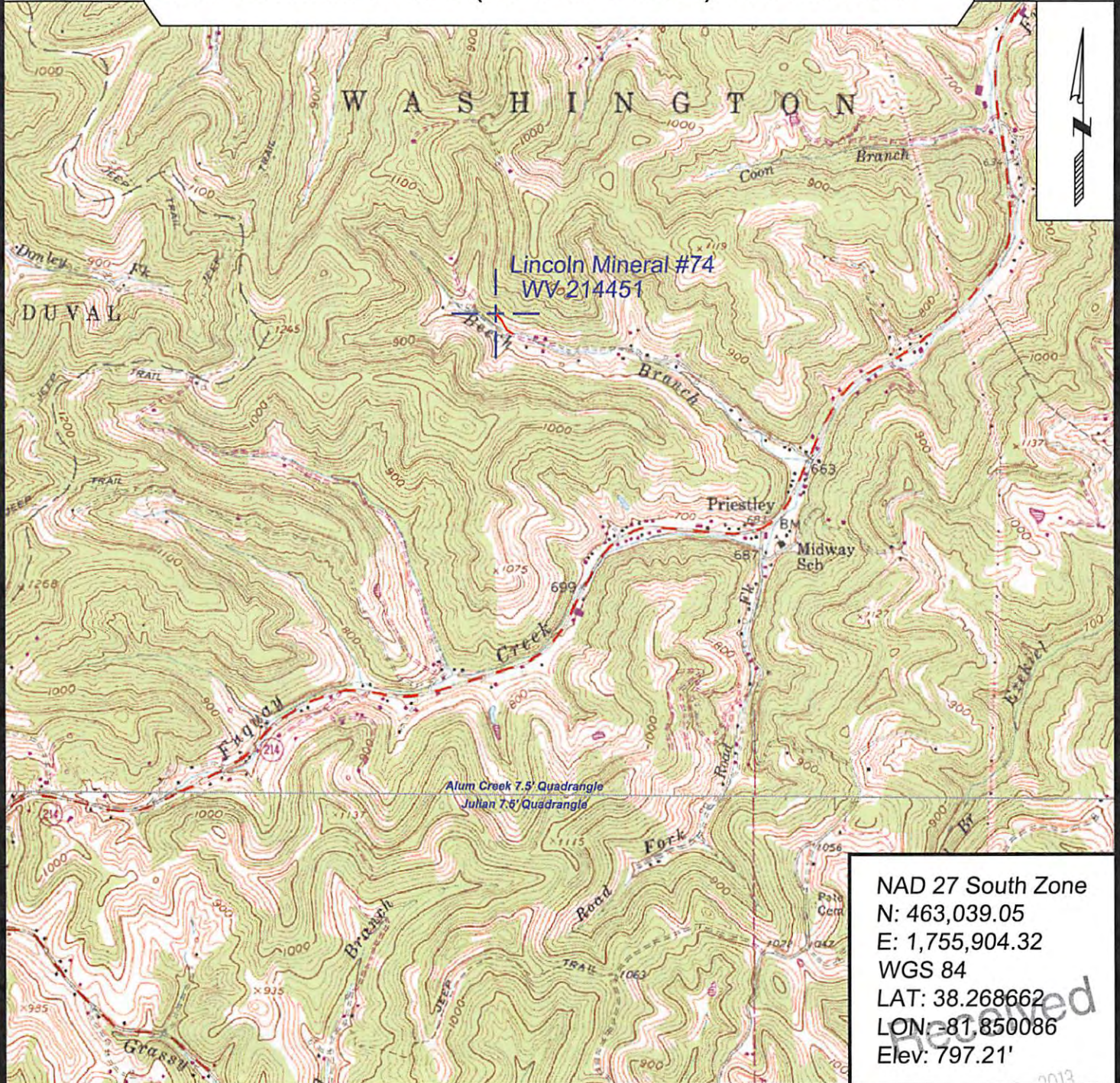
Date: August 1, 2013

District: Washington

Project No: 206-26-S-13

Lincoln Mineral #74 (47-043-03031) WV 214451

Topo



NAD 27 South Zone
 N: 463,039.05
 E: 1,755,904.32
 WGS 84
 LAT: 38.268662
 LON: -81.850086
 Elev: 797.21'



SURVEYING AND MAPPING SERVICES PERFORMED BY:

ALLEGHENY SURVEYS, INC.

1-800-482-8606
 P.O. BOX 438
 BIRCH RIVER, WV 26610
 PH: (304) 649-8606
 FAX: (304) 649-8608

PREPARED FOR:

EQT Production Company

P.O. Box 280
 Bridgeport, WV 26330

AUG 15 2013

Office of Oil and Gas
 Department of Environmental Protection