

WW-7
8-30-06



West Virginia Department of Environmental Protection
Office of Oil and Gas
WELL LOCATION FORM: GPS

API: 47-043-02950 WELL NO.: 823188

FARM NAME: Pyxis Resources Co 23188

RESPONSIBLE PARTY NAME: Core Appalachia Operating LLC

COUNTY: Lincoln DISTRICT: Harts Creek

QUADRANGLE: Trace

SURFACE OWNER: Melve & Sena Lowe

ROYALTY OWNER: Core Appalachia Operating LLC

UTM GPS NORTHING: 393,554.84

UTM GPS EASTING: 4,205,420.37 GPS ELEVATION: 359.24 meters (1178')

The Responsible Party named above has chosen to submit GPS coordinates in lieu of preparing a new well location plat for a plugging permit or assigned API number on the above well. The Office of Oil and Gas will not accept GPS coordinates that do not meet the following requirements:

- Datum: NAD 1983, Zone: 17 North, Coordinate Units: meters, Altitude: height above mean sea level (MSL) – meters.
- Accuracy to Datum – 3.05 meters
- Data Collection Method:
Survey grade GPS ____ : Post Processed Differential ____
Real-Time Differential ____
Mapping Grade GPS X : Post Processed Differential X
Real-Time Differential ____

RECEIVED
Office of Oil and Gas

AUG 28 2019

WV Department of
Environmental Protection

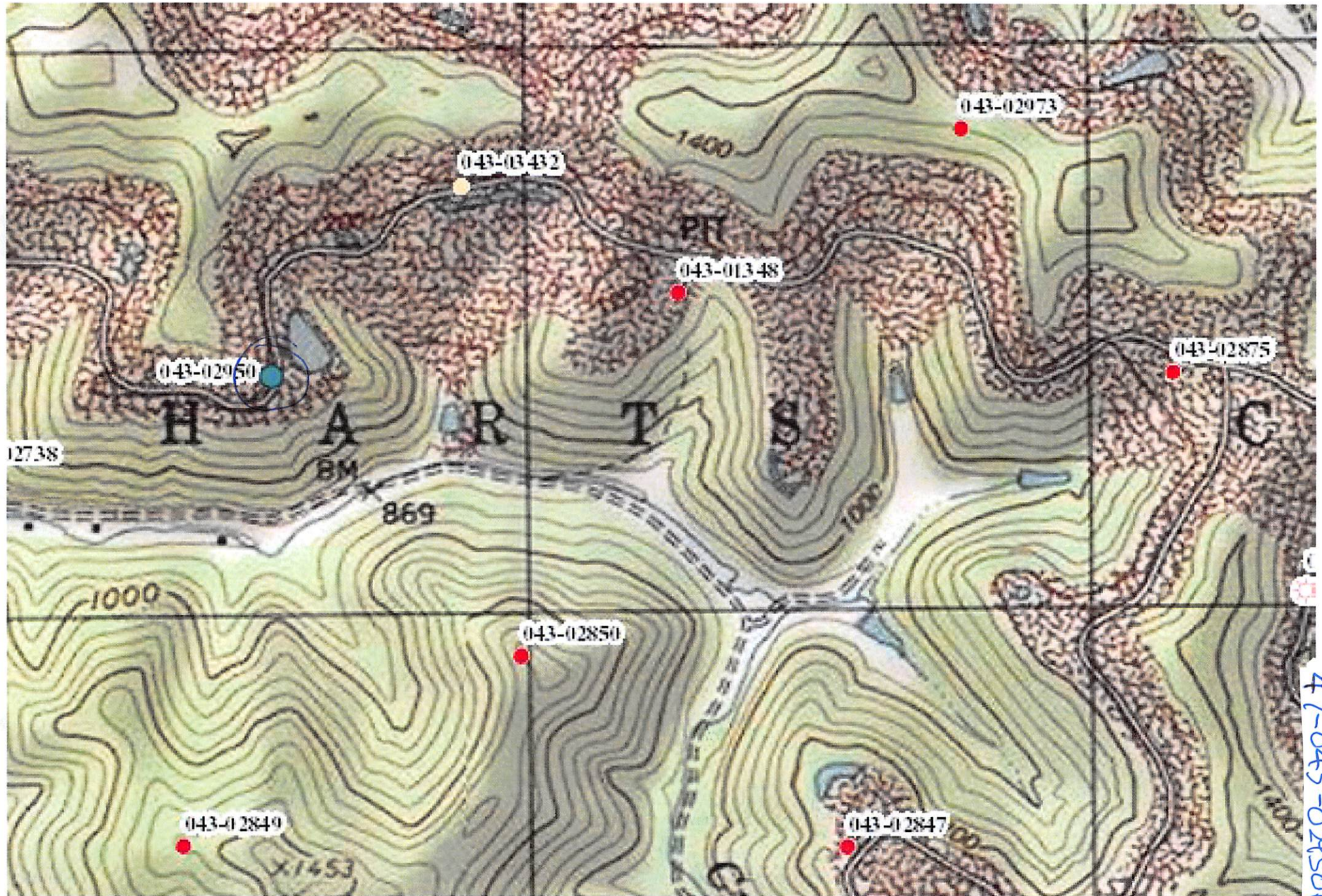
4. Letter size copy of the topography map showing the well location.

I the undersigned, hereby certify this data is correct to the best of my knowledge and belief and shows all the information required by law and the regulations issued and prescribed by the Office of Oil and Gas.

[Signature]
Signature

Engineer III
Title

7-24-2019
Date



47-043-02950P



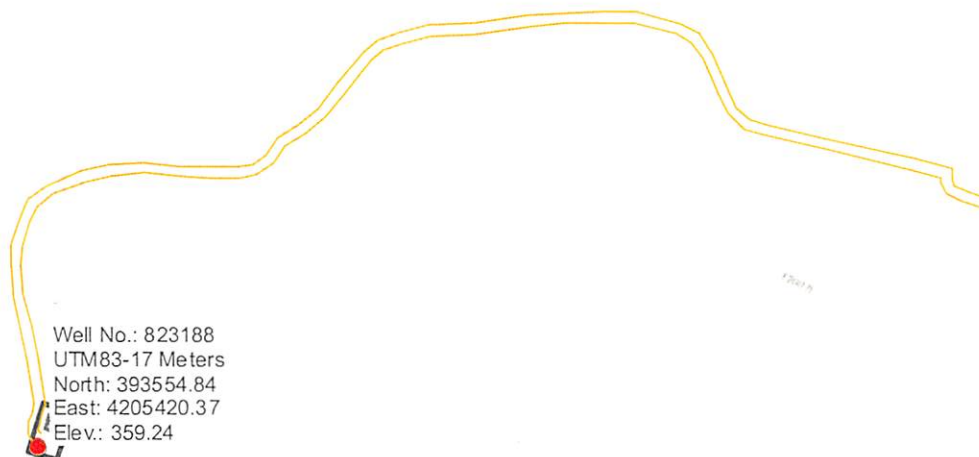
Diversified Gas & Oil
Corporation
100 Diversified Way
Pikeville KY, 41051

823188

Plugging Map

Legend

- Well
- ⊗ Sediment Control
- Access Road
- Pits
- Pad
- Public Roads



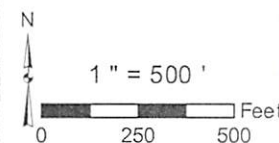
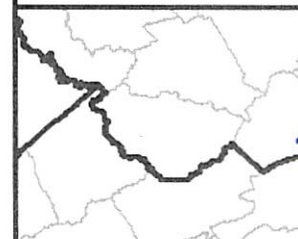
Well No.: 823188
UTM83-17 Meters
North: 393554.84
East: 4205420.37
Elev.: 359.24

JIMS BR

Khatt Creek

RECEIVED
Office of Oil and Gas
AUG 28 2019
WV Department of
Environmental Protection

Sources: Esri, HERE, Garmin, Intermap, increment P Corp., GEBCO, USGS, FAO, NPS, NRCAN, GeoBase, IGN, Kadaster NL, Ordnance Survey, Esri Japan, METI, Esri China (Hong Kong), (c) OpenStreetMap contributors, and the GIS User Community



49-043-02950 P