

WW-7  
8-30-06



West Virginia Department of Environmental Protection  
Office of Oil and Gas  
**WELL LOCATION FORM: GPS**

API: 47-043-02060 WELL NO.: 804937

FARM NAME: W.F. Black

RESPONSIBLE PARTY NAME: Core Appalachia Operating LLC

COUNTY: Lincoln DISTRICT: Union

QUADRANGLE: Hager

SURFACE OWNER: Mud River Greyhounds, LLC

ROYALTY OWNER: Waco Oil and Gas CO INC

UTM GPS NORTHING: 402,882.03

UTM GPS EASTING: 4,229,900.42 GPS ELEVATION: 247.95 m (813.3')

The Responsible Party named above has chosen to submit GPS coordinates in lieu of preparing a new well location plat for a plugging permit or assigned API number on the above well. The Office of Oil and Gas will not accept GPS coordinates that do not meet the following requirements:

1. Datum: NAD 1983, Zone: 17 North, Coordinate Units: meters, Altitude: height above mean sea level (MSL) – meters.
2. Accuracy to Datum – 3.05 meters
3. Data Collection Method:

Survey grade GPS  : Post Processed Differential   
 Real-Time Differential   
 Mapping Grade GPS  : Post Processed Differential   
 Real-Time Differential

RECEIVED  
Office of Oil and Gas

JUL 29 2019

WV Department of  
Environmental Protection

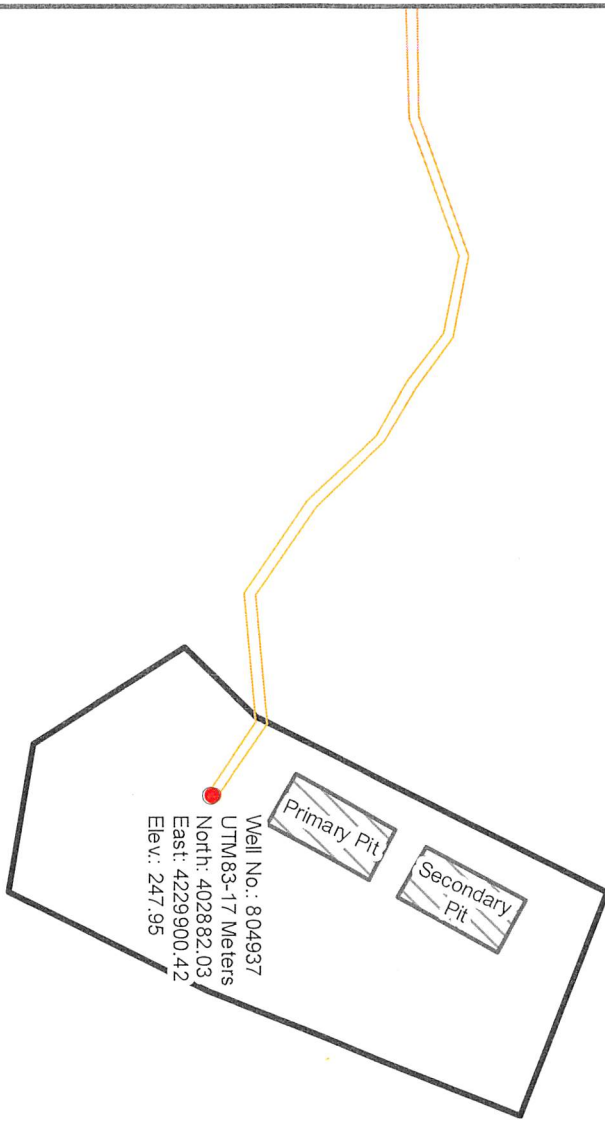
4. Letter size copy of the topography map showing the well location.

I the undersigned, hereby certify this data is correct to the best of my knowledge and belief and shows all the information required by law and the regulations issued and prescribed by the Office of Oil and Gas.

 Engineer III 7-22-2019  
 Signature Title Date



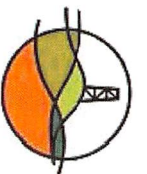
47-043-02060P



RECEIVED  
Office of Oil and Gas

JUL 29 2019

WV Department of  
Environmental Protection



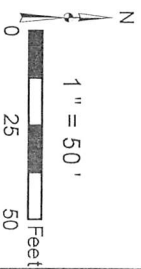
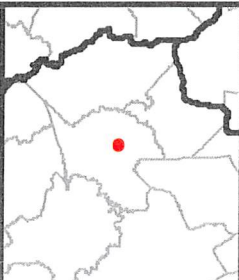
Diversified Gas & Oil  
 Corporation  
 100 Diversified Way  
 Pikeville KY, 41051

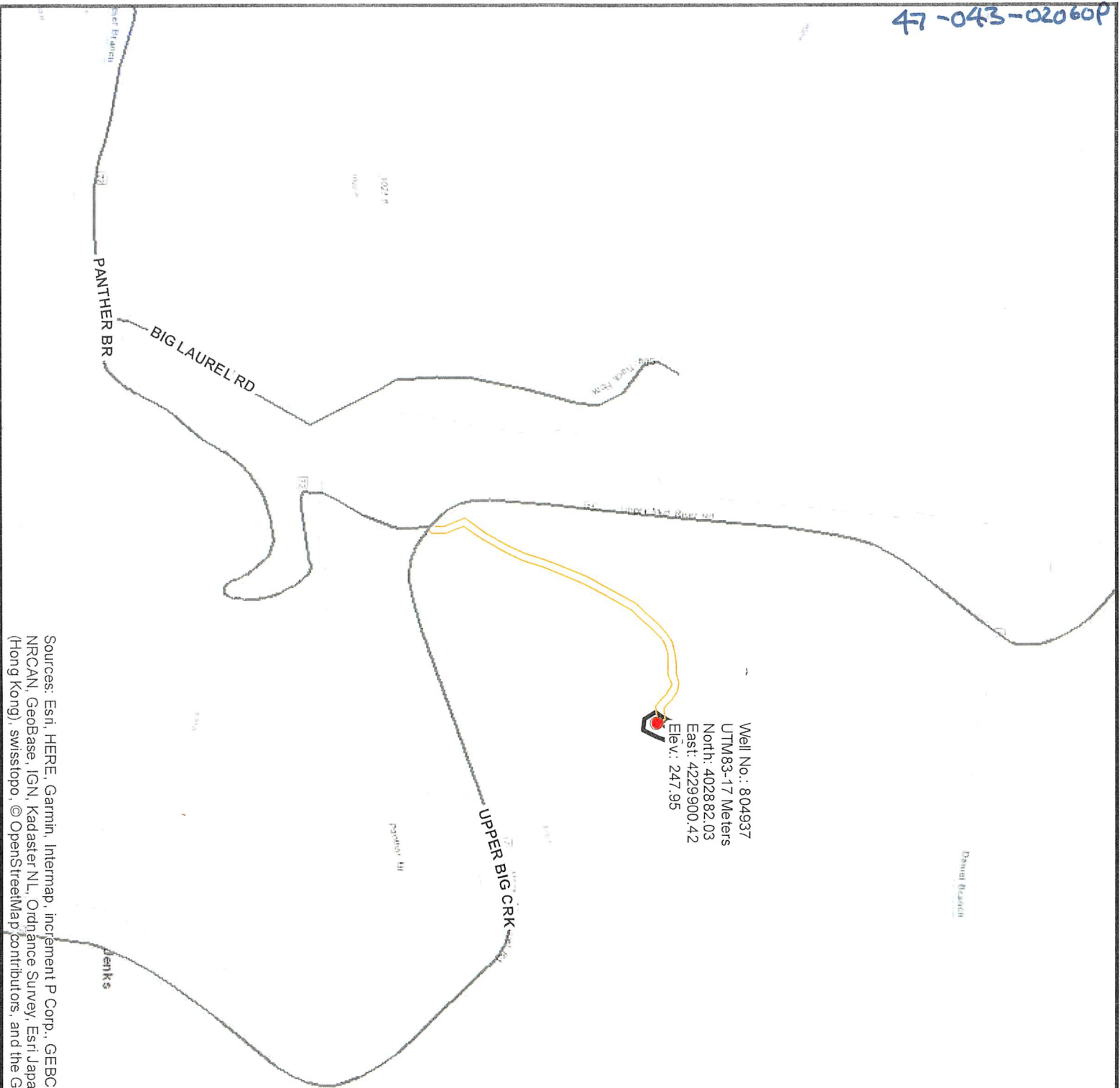
804937

Plugging Map

**Legend**

- Well
- Sediment Control
- Access Road
- Pits
- Pad

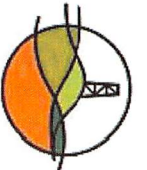




RECEIVED  
Office of Oil and Gas

JUL 29 2019

WV Department of  
Environmental Protection

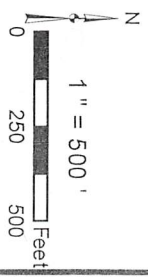
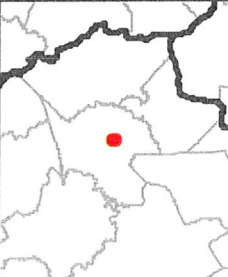


804937

Plugging Map

Legend

- Well
- ⊗ Sediment Control
- Access Road
- ▨ Pits
- Pad
- Public Roads



Sources: Esri, HERE, Garmin, Intermap, increment P Corp., GEBCO, USGS, FAO, NPS, NRCAN, Geobase, IGN, Kadaster NL, Ordnance Survey, Esri Japan, METI, Esri China (Hong Kong), swisstopo, © OpenStreetMap contributors, and the GIS User Community