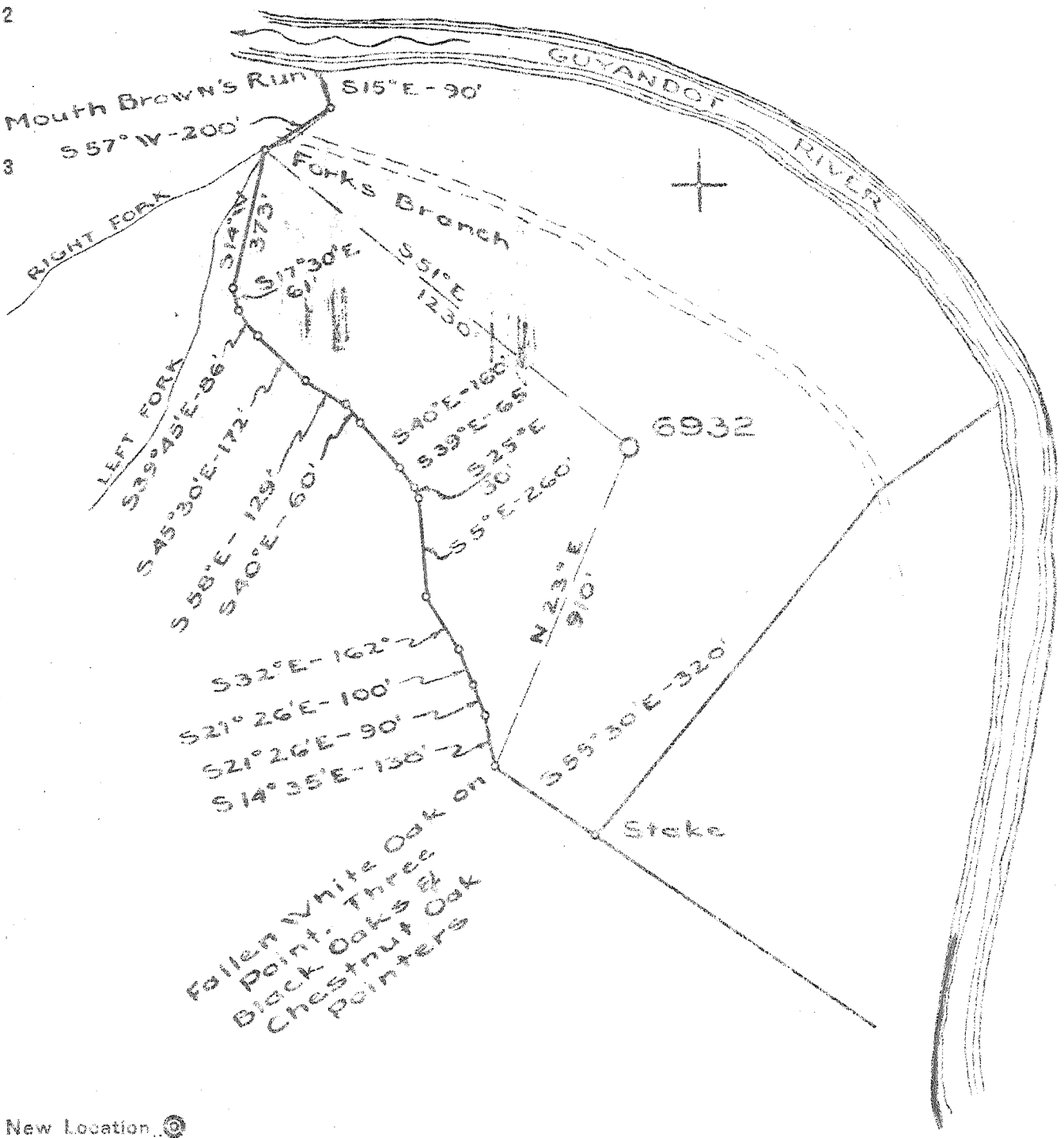


Latitude 38° 05'

P

28  
3.34 S  
2.863 W

Longitude 82° 05'



New Location    
 Drill Deeper    
 Abandonment

Company UNITED FUEL GAS CO  
 Address CHARLESTON, W.VA.  
 Farm BESSIE ADKINS ETAL  
 Tract \_\_\_\_\_ Acres 102 Lease No. 49709  
 Well (Farm) No. \_\_\_\_\_ Serial No. 6932  
 Elevation (Spirit Level) 648.8  
 Quadrangle MIDKIFF S  
 County LINCOLN District HARTS CK  
 Engineer Paul E. ...  
 Engineer's Registration No. 669  
 File No. 34-37 Drawing No. \_\_\_\_\_  
 Date JAN. 24-52 Scale 1"=400'

STATE OF WEST VIRGINIA  
 DEPARTMENT OF MINES  
 OIL AND GAS DIVISION  
 CHARLESTON

WELL LOCATION MAP  
 FILE NO. LIN-1056

+ Denotes location of well on United States Topographic Maps, scale 1 to 62 500, latitude and longitude lines being represented by border lines as shown.

- Denotes one inch spaces on border line of original tracing.

6-6 275

No samples

Deep well

WEST VIRGINIA DEPARTMENT OF MINES  
OIL & GAS DIVISION  
W E L L R E C O R D

Permit No. Lin 1056  
Midkiff Quad.

Gas Well  
CASING & TUBING

Company	United Fuel Gas Company		
Address	P.O. Box 1273, Charleston, 25, W.Va.	10	26
Farm	Bessie Adkins et al Acres 102	8½	207
Location	Guyandot River	7	1286
Well No.	6932 Elev. 648.8	2	2510
District	Harts Creek Lincoln County		
Surface Minefall			Comb. Hook Wall & Anchor Packer
Commenced	5-27-52		Size 2 x 7 x 24
Completed	8-1-52		Depth 1562'
Date shot	8-7-52 Depth 2294 to 3275		
Open flow	with 6,600# gelatin		Coal at 97' 36"
Volume	69/10ths W in 2"		
Rock Pressure	382,000 C.F.		
	378# 48 hrs.		
	370# 48 hrs.		
Fresh Water	50' 2 blrs. per hr.; 280' HPW		
Salt Water	800--830'		

Surface	0	10	Brown Shale	2995	3125
Sandy Gravel	10	25	Slate	3125	3140
Sand	25	35	Brown Shale	3140	3275
Slate	35	50	White Slate	3275	3595
Sand	50	60	Brown Shale	3595	3742
Slate	60	85	Corniferous Lime	3742	
Sand	85	97	T.D.		3742
Coal	97	100			
Slate	100	120	Show gas 1346'		
Sand	120	195	Gas 1415' 6/10 W 1" 26 M		
Slate	195	253	Gas 1450' 10/10 W 1" 33 M		
Sand	253	290	Gas 2300' decreased to 8/10 W 1" 30 M		
Slate	290	345	Gas 3015' increased to 10/10 W 1" 33 M		
Sand	345	360	Test before shot 8/10 W 1" 30 M		
Slate & Shells	360	461	Shot 8-6-52 with 933 1/3# gelatin from		
Sand	461	520	3598-3742'		
Slate	520	535	Test 15 hours after shot 14/10 W 1" 39 M		
Blue Sand	535	685			
Salt Sand	635	930	Test before shot 14/10 W 1" 39 M		
Slate	930	965	Shot 8-7-52 with 6,600# gelatin from		
Sand	965	980	2294-3275'		
Slate	980	1040	Test 18 hours after shot 69/10 W 2" 350 M		
Maxon Sand	1040	1116			
Slate	1116	1133	Final open flow; 382 M Br. Shale 350 M		
Red Rock	1133	1140	Big Limo 32 M		
Blue Slate	1140	1164	48 hr. R.P. 378# Csg.		
Red Rock	1164	1172	48 hr. R.P. 370# tubing		
Slate	1172	1190	Shut in 8-8-52 in 2" tubing		
Sand	1190	1205			
Slate	1205	1215			
Little Limo	1215	1258			
Pencil Cave	1258	1263			
Big Limo	1263	1270			
Slate	1270	1277			
Big Limo	1277	1455			
Injun Sand	1455	1493			
Slate & Shells	1493	1630			
Big Sholl	1630	1690			
Slate & Shells	1690	1780			
Slate	1780	1900			
Slate & Shells	1900	2000			
Brown Shale <i>Coffee</i>	2000	2014			
Berea Grit	2014	2030			
Slate & Shells	2030	2100			
Slate	2100	2300			
Slate & Shells	2300	2475			
White Slate	2475	2960			
Brown Shale	2960	2970			
White Slate	2970	2995			

3742  
649  
-----  
3093