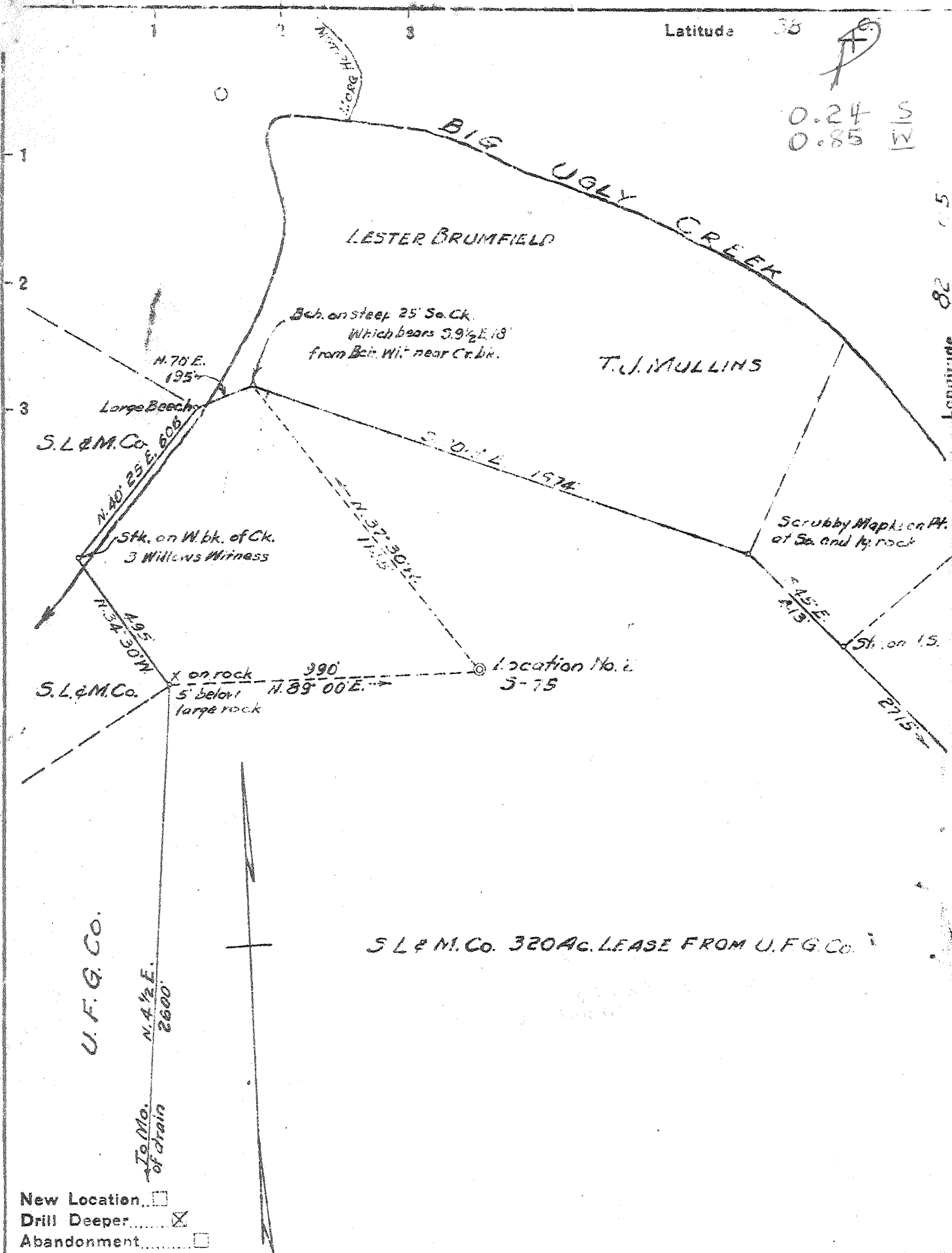


Latitude 38

0.24 S
0.85 W

Longitude 82 15



New Location
 Drill Deeper
 Abandonment

Company SWEETLAND LAND & MINERAL CO.
 Address HUNTINGTON, W.VA.
 Farm UNITED FUEL GAS CO.
 Tract _____ Acres 320 Lease No. _____
 Well (Farm) No. 2 Serial No. 75
 Elevation (Spirit Level) 1100
 Quadrangle MIDKIFF S
 County LINCOLN District HARTS CREEK
 Engineer A. G. Owing
 Engineer's Registration No. 309
 File No. _____ Drawing No. _____
 Date 6-27-51 Scale 1" = 400'

STATE OF WEST VIRGINIA
 DEPARTMENT OF MINES
 OIL AND GAS DIVISION
 CHARLESTON

WELL LOCATION MAP
 FILE NO. LIN-870-D

+ Denotes location of well on United States Topographic Maps, scale 1 to 62,500, latitude and longitude lines being represented by border lines as shown.
 - Denotes one inch spaces on border line of original tracing.

No Samples 6-6 275 Deep well

WEST VIRGINIA DEPARTMENT OF MINES
OIL & GAS DIVISION
W E L L R E C O R D

Permit No. Lin 870
Midkiff Quad.
Company
Address

Gas Well
CASING & TUBING

Farm	Sweetland Land & Mineral Co.	10	16	16
Location	1012 First Hunt. Nat. Bk. Bldg.	8 1/2	369'7	369'7
Well No.	Huntington, W.Va.	6 5/8	1774'4	1774'4
District	United Fuel Gas Co. A 320	3	3355'	3355'
Surface	Big Ugly Creek	Casing Packer Spang		
Mineral	75 Elev. 1100'	No. 22014		
Commenced	Harts Creek Lincoln County	United Fuel Gas Co., Charleston, W.Va.		
Completed	United Fuel Gas Co., Charleston, W.Va.	Spang 3 Stop Cone Wall		
Well not shot	Aug. 16, 1948	and Anchor No. 23249		
Rock Pressure	Nov. 17, 1948	Size 3 x 7		
	Casing head 485# -42 hrs.	Depth 1910'		
	Tubing 230#			

Clay	0	10
Sand	10	166
Clay	166	171
Coal	171	175
Slate	175	215
Broken Sand	215	270
Slate	270	300
Sand	300	362
Slate	362	390
Sand	390	470
Slate	470	520
Sand	520	560
Slate	560	630
Sand	630	665
Slate	665	695
Sand	695	725
Slate	725	745
Sand	745	765
Slate	765	832
Sand	832	848
Slate & Shells	848	995
Gas Sand	995	1020
Slate	1020	1035
<i>1st</i> Salt Sand	1035	1162
Slate	1162	1170
<i>2nd</i> Salt Sand	1170	1310
Slate	1310	1445
Sand	1445	1500
Slate Sand	1500	1563
Maxon Sand	1563	1619
Shell	1619	1633
Pale Red Rock	1633	1635
Slate	1635	1664
Red Rock	1664	1678
Slate	1678	1714
Little Lime	1714	1741
Pencil Cave	1741	1745
Big Lime	1745	1943
Red Injun Sand - <i>297-319</i>	1943	1954
Grey Injun Sand - <i>375</i>	1954	1984
Slate & Shells	1984	2080
Big Shell	2080	2160
Slate Shells	2160	2444
Brown Shale - <i>Sby?</i>	2444	2464
Berea Sand	2464	2481
Slate & Shells	2481	3148
Grey Shale	3148	3340



STATE OF WEST VIRGINIA
DEPARTMENT OF MINES
OIL AND GAS DIVISION

Midkiff

Quadrangle _____

Permit No. LIN-870-D

WELL RECORD

Oil or Gas Well Gas
(KIND)

Company Sweetland Land And Mineral Co.
Address 1012 F. H. W. Bank Bldg. Huntington, W. Va.
Farm United Fuel Gas Company Acres 320
Location (waters) Big Ugly Creek
Well No. 75 Elev. 1100'
District Harts Creek County Lincoln
The surface of tract is owned in fee by United Fuel Gas Co.
Address Charleston, W. Va.
Mineral rights are owned by United Fuel Gas Co.
Address Charleston, W. Va.
Drilling commenced September 15, 1954
Drilling completed January 2, 1955
Date Shot 12-15-54 From 3477' To 4258'
With 8400 lbs. Detonite
Open Flow 15 /10ths Water in _____ Inch
2 /10ths Merc. in _____ Inch
Volume 163,000 Cu. Ft.
Rock Pressure _____ lbs. _____ hrs.
Oil _____ bbls., 1st 24 hrs.
Fresh water _____ feet _____ feet
Salt water _____ feet _____ feet

Casing and Tubing	Used in Drilling	Left in Well	Packers
Size			
16			Kind of Packer <u>Spang</u>
18			<u>Cement Wall & Anchor</u>
10			<u>3 Step</u>
8 1/4			Size of <u>7x3"</u>
6 5/8			Depth set <u>2110'</u>
5 3/16			
3	<u>4053'</u>	<u>4053'</u>	Perf. top
2			Perf. bottom
Liners Used			Perf. top
			Perf. bottom

CASING CEMENTED _____ SIZE _____ No. Ft. _____ Date _____

COAL WAS ENCOUNTERED AT _____ FEET _____ INCHES
_____ FEET _____ INCHES _____ FEET _____ INCHES
_____ FEET _____ INCHES _____ FEET _____ INCHES

Formation	Color	Hard or Soft	Top	Bottom	Oil, Gas or Water	Depth Found	Remarks
Started Drilling				3340			
Shale	Gray		3340	3500			
Shale	Brown		3500	3794			
Slate	White		3794	4120			
Shale	Brown		4120	4214			
Shale	Black		4214	4258			
Corniferous Lime			4258				
			<u>2451</u>				
			<u>1179</u>				

