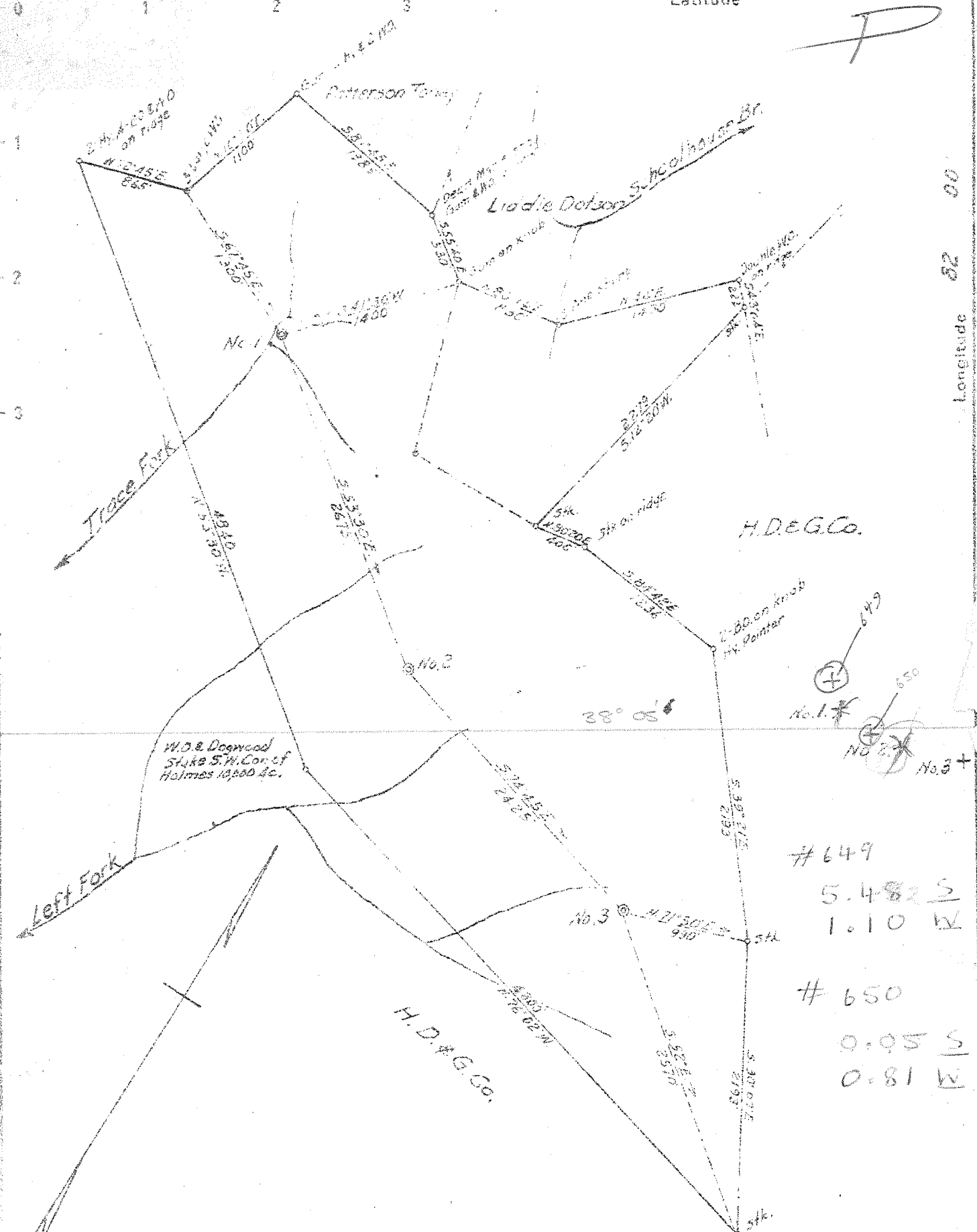


P



#649
 5.482 S
 1.010 W

#650
 0.05 S
 0.81 W

New Location X
 Drill Deeper
 Abandonment

Company R. H. ADKINS
 Address HAMLIN, W. VA.
 Farm HUNTINGTON DEV. & GAS CO.
 Tract _____ Acres 474 Lease No. _____
 Well (Farm) No. 1-223 Serial No. _____
 Elevation (Spirit Level) 1=950, 2=1090, 3=1070.
 Quadrangle MIDKIFF EC & SE
 County LINCOLN District HARTS CREEK
 Engineer L. B. Curing
 Engineer's Registration No. AT 309
 File No. _____ Drawing No. _____
 Date 8-28-45 Scale 1"=1000'

STATE OF WEST VIRGINIA
 DEPARTMENT OF MINES
 OIL AND GAS DIVISION
 CHARLESTON

WELL LOCATION MAP
 FILE NO. LIN-649-#1 EC
LIN-650-#2 SE
LIN-651-#3

+ Denotes location of well on United States Topographic Maps, scale 1 to 62,500. Latitude and longitude lines being represented by border lines as shown.

- D notes one inch spaces on 1" scale of original tracing.

6-6 275 Deep Well

WEST VIRGINIA DEPARTMENT OF MINES
OIL & GAS DIVISION
W E L L R E C O R D

Permit No. 650

Midkiff Quad.

Company

Address

Farm

Location

Well No.

District

Surface

Mineral

Commenced

Completed

Date shot

Volume

Open flow

Rock Pressure

No oil

Fresh Water

Salt Water

Leet Gas Company

Hamlin, W.Va.

United Fuel Gas Co. A-

Big Ugly Creek

2 Elev. 1050

Harts Creek Lincoln County

United Fuel Gas Co., Charleston, W.Va.

Same

April 15, 1946

July 18, 1946

7-15-46 Depth 2373 to 4308

with 17,550 lbs. detonite

426,000 C.F.

6/10ths M in 2"

360 lbs. 48 hrs.

Gas Well
CASING & TUBING

10 23-2 23-2

8½ 231-7 231-7

6 5/8 1673 1673

2 3009-2 3009-2

3 Step Spang Packer

Size 6 5/8 x 2 x 8½

Depth 1213

Perf. top 1209

" bot 4308

63'

855' 1110'

Surface	0	5
Yellow Sand	5	80
Slate & Sand	80	220
Slate	220	250
Sand	250	425
Slate & Shells	425	550
Slate & Sand	550	855
Salt Sand	855	1110
Slate	1110	1120
Sand	1120	1210
Slate Shells	1210	1305
Sand & Shells	1305	1435
Maxon Sand	1435	1550
Slate	1550	1582
Red Rock	1582	1588
Slate & Shells	1588	1625
Little Lime	1625	1660
Pencil Cave	1660	1663
Big Lime	1663	1875
Injun Sand	1875	1900
Weir Shells	1900	1990
Big Shell	1990	2070
Slate Shells	2070	2363
Brown Shale <i>Coffee</i>	2363	2373
Berea Sand	2373	2397
Slate	2397	2403
Shell	2403	2470
Slate	2470	2580
Shell	2580	2645
Slate Shells	2645	3490
Brown Shale	3490	3540
Shells	3540	3660
Brown Shale	3660	3815
White Shale	3815	4160
Brown Shale	4160	4328
Corniferous	4328	4363
Total Depth		4363

4328
1050

3278