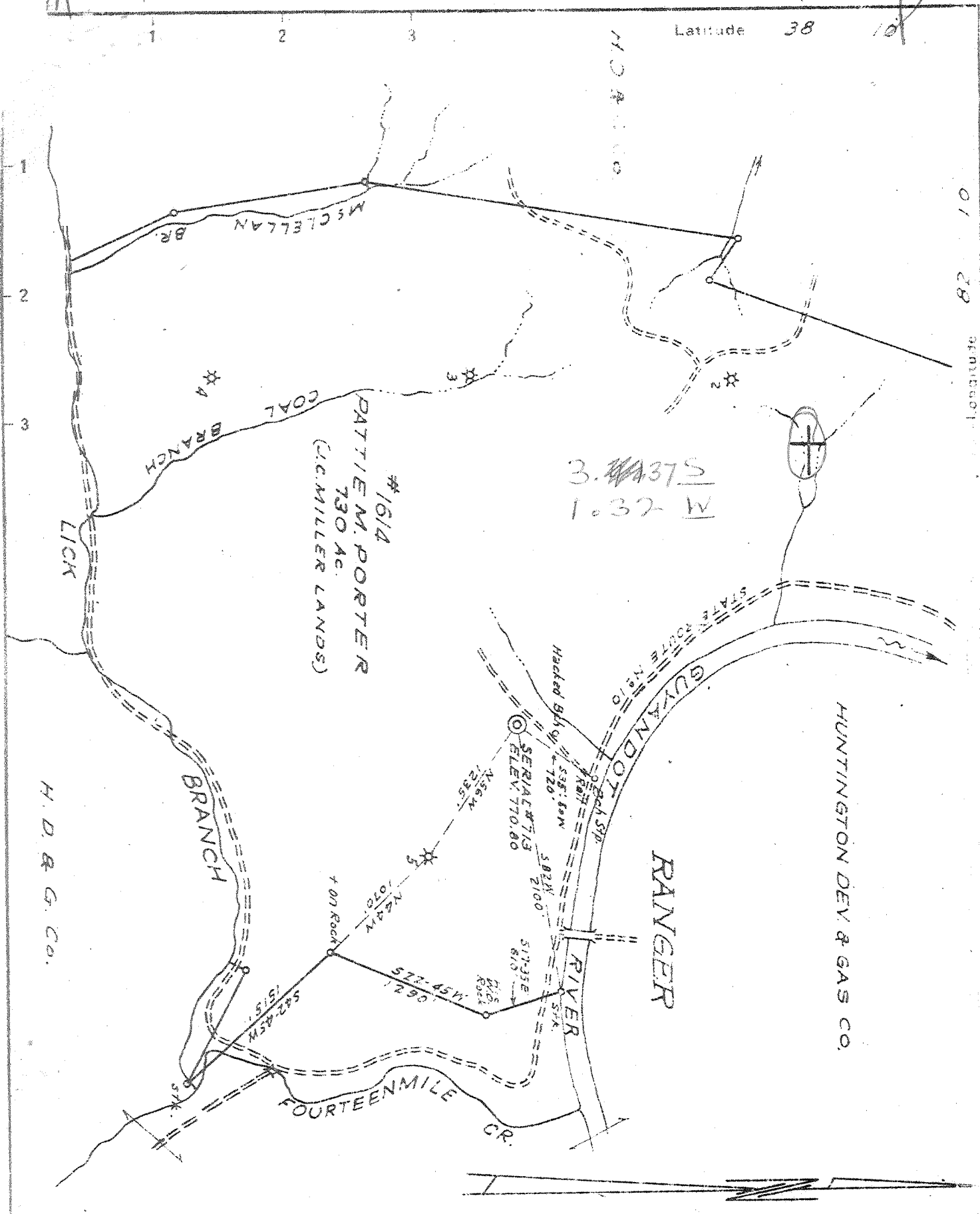


Latitude 38 10'



New Location ■
 Drill Deeper...
 Abandonment

Company THE OWENS LIBBEY OWENS GAS DEPT.
 Address BOX 2111 CHARLESTON 28, W. VA.
 Farm PATTIE M. PORTER et al
 Tract _____ Acres 730 Lease No. 1614
 Well (Farm) No. 6 Serial No. 713
 Elevation (Spirit Level) 770.80
 Quadrangle MIDKIFF N 6-5 340' W 1.33"
 County LINCOLN District LAUREL HILL
 Engineer T.S. Flournoy
 Engineer's Registration No. 269
 File No. _____ Drawing No. _____
 Date NOV. 27 1945 Scale 1" = 1000 FT.

STATE OF WEST VIRGINIA
 DEPARTMENT OF MINES
 OIL AND GAS DIVISION
 CHARLESTON

WELL LOCATION MAP
 FILE NO. LIN-614

+ Denotes location of well on United States Topographic Map. Reference to 62nd meridian latitude and longitude lines being shown only by border lines shown.
 - Denotes location of well on original map of origin.

Samples (100-4-6) (1072-1076) 6-6 233 Deep Well

WEST VIRGINIA DEPARTMENT OF MINES
OIL & GAS DIVISION
W E L L R E C O R D

Permit No. Lin 614
Midkiff Quad.

Gas Well
CASING & TUBING

Company
Address
Farm
Location
Well No.
District
Surface
Mineral

The Owens, Libbey-Owens Gas Dept.
P.O. Box 2111, Charleston 28, W.Va. $3\frac{1}{2}$ 153 153
Pattie M. Porter #6 Acres 730 6 5/8 1348 1348
8 3341 3341
713 Elev. 770.80 PACKER
Laurel Hill Lincoln County Oil Well Anchor Wall
L.C. Hatfield, Ranger, W.Va. Size 6 5/8 x 3 x 16
Pattie M. Porter et al
1508 5th Ave. Huntington, W.Va. Coal at 95' 36"

Commenced
Completed
Date shot

6-12-45
8-16-45
8-20-45 Depth 2469' to 3684
with 12,000 # Detonite

Open fl w
Volume
Rock Pressure
Fresh Water
Salt Water

20/10ths W in 2"
140 M.C.F.
405 lbs. 60 hrs.
143 2 bail hr.
608 1 bail hr.; 670 H.F.
747 Stood at 250'
1263' Stood at 250'

Sand	Y	S	0	12	Brown Shale	Br	S	2489	2560
Sand	Lt	S	12	82	Shell	Gr	H	2560	2651
Slate	Bk	S	82	95	Brown Shale	Br	S	2651	2656
Coal	Bk	S	95	98	Shale & Shells	Dk	M	2656	2795
Sand	Wh	H	98	129	Shell	Dk	H	2795	2828
Slate	Dk	S	129	140	Shale & Shells	Dk	M	2828	2837
Sand	Lt	S	140	220	Shell	Gr	H	2837	2856
Slate	Dk	S	220	245	Shale & Shells	Dk	M	2856	2886
Sand	Wh	S	245	284	Shells	Dk	H	2886	2991
Slate	Dk	S	284	446	Slate	Gr	S	2991	2998
Sand	Wh	M	446	502	Shale & Shells	Br	M	2998	3090
Slate	Dk	S	502	522	Shell	Dk	H	3090	3105
Sand	Lt	M	522	557	Shale	Br	S	3105	3112
Slate	Dk	S	557	562	Shell	Dk	H	3112	3139
Salt Sand	Wh	H	562	1125	Shale & Shell	Dk	M	3139	3174
Slate	Dk	S	1125	1164	Shale	Dk	S	3174	3199
Sand	Wh	M	1164	1166	Shale & Shell	Dk	M	3199	3235
Red Rock		S	1166	1174	Shale & Shell	Br	M	3235	3265
Shell	Lt	H	1174	1186	Shale	Br	S	3265	3281
Slate & Shell	Dk	M	1186	1221	Slate	Gr	S	3281	3288
Slate	Dk	S	1221	1226	Slate & Shell	Gr	M	3288	3315
Lime	Dk	H	1226	1236	Slate	Lt	S	3315	3321
Shell	Dk	H	1236	1245	Shell	Gr	H	3321	3335
Red Rock		S	1245	1250	Slate & Shell	Gr	M	3335	3549
Slate & Shell	Dk	S	1250	1257	Shale	Dk	M	3549	3569
Slate	Dk	S	1257	1274	Slate & Shell	Dk	M	3569	3606
Lime	Dk	H	1274	1320	Shale	Dk	M	3606	3674
Slate	Dk	S	1320	1323	Shale	Br	S	3674	3680
Big Lime	Wh	H	1323	1518	Corniferous Lm.	Dk	H	3680	3685
Injun	Gr	H	1518	1548	TOTAL DEPTH				3685
Red Rock		M	1548	1552					
Shell	Dk	M	1552	1560	Gas 1444	22	M		
Sand	Gr	M	1560	1590	Oil 1444	Show			
Slate & Shells	Lt	M	1590	1662	Gas 1569	28	M		
Shell	Lt	H	1662	1690	Gas 2117-2118	27	M		
Slate & Shell	Lt	M	1690	1764	Gas 3174	19	M		
Shell	Lt	H	1764	1851	Gas 3335	21	M		
Slate & Shell	Lt	M	1851	1917	Gas 3547	23 1/2	M		
Slate & Shell	Lt	S	1917	2101					
Brown Shale	Gr	S	2101	2112	Test B.S.	20	M		
Berea Sand	Gr	H	2112	2132	15 Min A.S.	860	M		
Slate	Dk	S	2132	2126	30 Min A.S.	572	M		
Shell	Lt	H	2126	2159	1 hr. A.S.	392	M		
Slate & Shell	Dk	M	2159	2168	10 hr. A.S.	211	M		
Shell	Dk	H	2168	2183	24 hr. A.S.	154	M		
Slate & Shell	Dk	M	2183	2281	Tubed 20/10 W 2" Plate 140 M				
Shell	Lt	H	2281	2303					
Slate & Shell	Lt	H	2303	2489					