

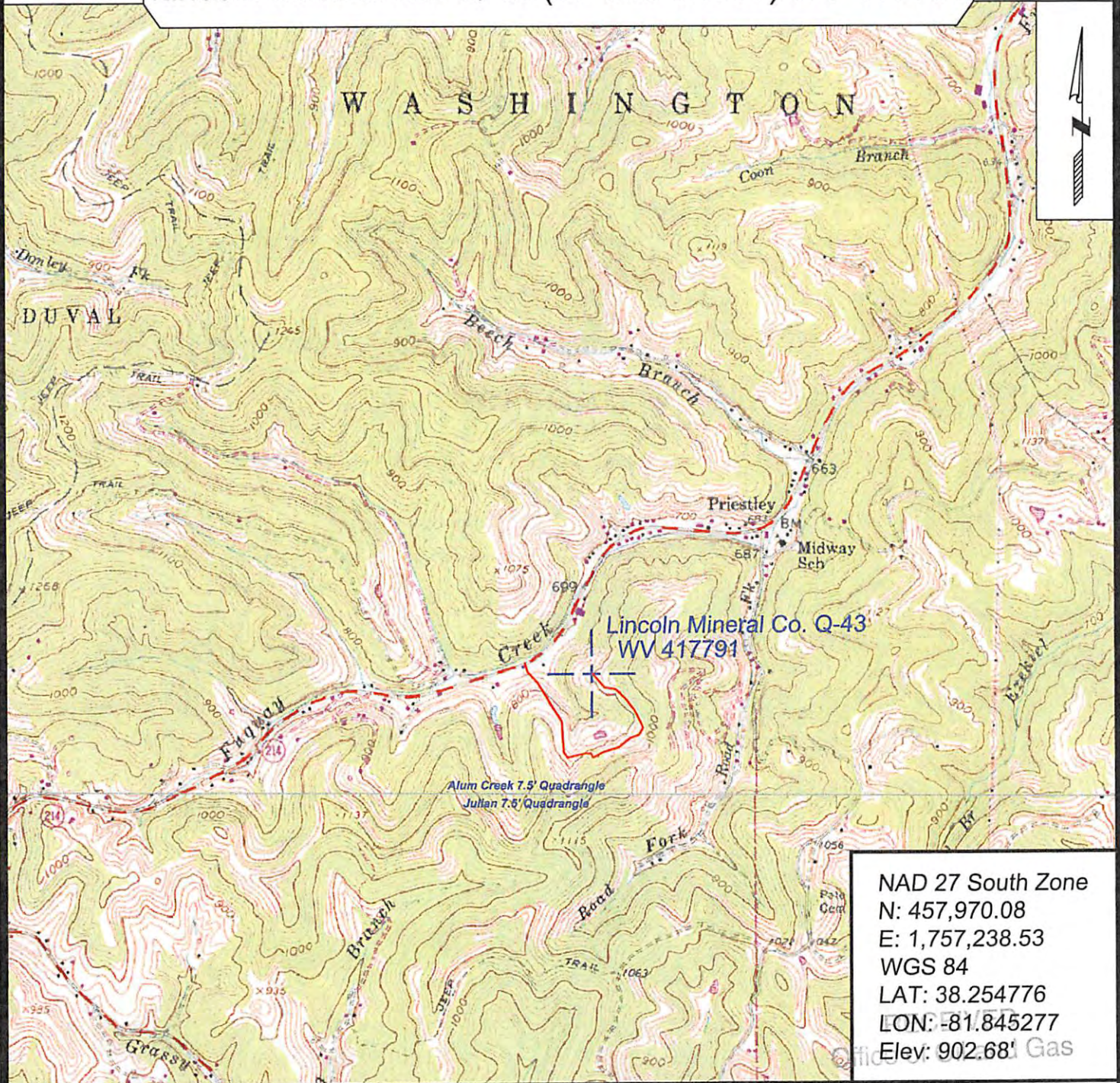
Topo Quad: Alum Creek 7.5' Scale: 1" = 2000'

County: Lincoln Date: August 1, 2013

District: Washington Project No: 206-26-S-13

Lincoln Mineral Co. Q-43 (47-043-00584) WV 417791

Topo



NAD 27 South Zone
N: 457,970.08
E: 1,757,238.53
WGS 84
LAT: 38.254776
LON: -81.845277
Elev: 902.68' Gas

PREPARED FOR:

OCT 16 2013

EQT Production Company

P.O. Box 280
Bridgeport, WV 26330



SURVEYING AND MAPPING SERVICES PERFORMED BY:

ALLEGHENY SURVEYS, INC.

1-800-482-8606
P.O. BOX 438
BIRCH RIVER, WV 26610
PH: (304) 649-8606
FAX: (304) 649-8608