

LATITUDE 38° 15' 00"

LONGITUDE 82° 10' 00"



7.5 OGIS topo location

7.5' 10c	<u>1.115</u>	15' 10c	<u>1.115</u>
	<u>2.13W</u>	(calc.)	<u>2.13W</u>

Company _____

Farm _____

Midkiff NW

Quad BRANCHLAND 7 1/2'

County LINCOLN

District SHERIDAN

WELL LOCATION MAP

File No. 043 - 113

DEEP

6-6 (233)

JAMES

TOPPING

LANDA MIDKIFF

554°45'W 1470

152°25'W 960

90 ACRES

GARNETT L. DIAL (Mineral)
CLAUDE PEYTON (Surface)
AUDREY MCGOMAS (COAL)

Sheridan District, Lincoln County, W. Va.

(Circles are transit points)

Mulberry stump and sprouts

LIN-113

ESTEL MESSINGER

Old Well - plugged.

STATE HIGHWAY ROUTE No. 18

Property Line

BUYER

Scale: 1"=300'

ENGINEER'S CERTIFICATE

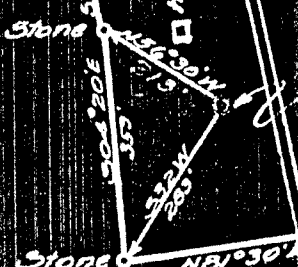
I, the undersigned, hereby certify that this Map is correct and shows all the information to the best of my knowledge and belief, required by the oil and gas section of the Mining Laws of West Virginia.

David S. Duncanson
Engr.

Acknowledged before me, a Notary Public, this 14 day of Dec 1931

J. S. Grierley

Proposed Location (No. 1)
Elevation: 595.0



Water Birch

PLAT
TO ACCOMPANY
APPLICATION OF
GARNETTE L. DIAL
HUNTINGTON, W. VA.

LINCOLN 113. (Taken from deep well book, pmb-'32)
 elevation given as $\approx 600'$ MIDKIFF QUAD. NW

(15' LOCATION)

38° 15'

S 1.19
 W 2.11



82° 10'

606 LINCOLN COUNTY, W. VA., WELL RECORDS

Claud Peyton No. 1 Well.

Sheridan District, Lincoln County, W. Va.
 By Hal H. (or Garnett L.) Dial.
 Permit No. Lin-113.
 Elevation, 600' \pm L. (by contour).
 400 M. cu. ft. gas.
 Located 1.3 mi. S. of 38° 15' and 2.13 mi. W. of 82° 10'—NW—Midkiff
 Quadrangle.
 On west side of Guyandot River.
 0.8 mi. N. W. of Branchland; 0.8 mi. S. W. of Sheridan.

	Top.	Bottom.	Thickness.	Elevation (top)
Big Lime -----	1134	1318	184	— 534
Big Injun Sand-----	1342	1372	30	— 742
Berea Sand -----	1887	1902	15	—1287
Corniferous Lime-----	3439	3441	2+	—2839

Thickness, Devonian Shales, 1537 feet. Total depth, 3441'.
 Remarks: Completed April 20, 1932. Shot at 3439-3324' and 3040-2750'.
 Fresh water, 70-100'. Salt water, 775'.
 60 M. gas in Berea. 26 M. gas, 2805-2910' (Brown Shale).
 On 84 acres.

(233) Four mile Branchland
 DEEP WELL

Sheridan District, Lincoln County, W. Va.

By Garnett L. Dial, Branchland, W. Va.

On 34 acres, Branchland; surface owned by Claud Peyton, and mineral rights by Garnett L. Dial, Branchland, W. Va.

No elevation given.

10" casing, 683'; 6-5/8", 1418'; 3" tubing, 1950'.

Hook wall packer, 6-5/8 x 3, set at 1950'.

Completion reported to Dept. of Mines April 20, 1932.

Well was shot at 3439-3324', with 1000 lbs. gelatin; no increase.

Well was shot at 3040-2750' with 2500 lbs. gelatin; after cleaning out eight days, well shut in four hundred thousand.

3" tubing set on hook wall packer at 1950'.

Drilling commenced Jan. 16, 1932.

Drilling completed, April 20, 1932.

Well tubed, April 28, 1932.

A.M. driller, Leo Dial, Huntington, W. Va.

P.M. driller, H. H. Dial, Branchland, W. Va.

Well located on the Claud Peyton farm on the waters of Guyandot River near Branchland, W. Va., Sheridan Dist., Lincoln Co., W. Va.

CIN-113

	Top.	Bottom.	Thickness.
Surface, brown	0	3	3
Sand and gravel	3	40	37
Blue mud	40	45	5
Quicksand	45	60	15
Sand, brown	60	70	10
Slate, black (fresh water, 4 bbl. pr. hr.)	70	100	30
Sand, white	100	120	20
Slate, gray	120	140	20
Sand, white	140	160	20
Slate, black	160	260	100
Sand, gray	260	340	80
Slate, gray	340	410	70
Sand, white	410	440	30
Slate, gray	440	450	10
Sand, gray	450	475	25
Slate, gray	475	550	75
Sand, Salt (salt water, 775')	550	795	245
Slate, black	795	803	8
Sand, white	803	868	65
Slate, white	868	882	14
Sand, gray	882	940	58
Slate, gray	940	947	7
Lime, black	947	957	10
Slate, gray	957	965	8
Sand, black	965	995	30
Sand, Maxton	995	1005	10
Red rock	1005	1008	3
Sandy lime, black	1008	1099	91
Slate, gray	1099	1102	3
Little lime, black	1102	1132	30
Pencil Cave, black	1132	1134	2
Big Lime, white	1134	1318	184
Slate, black	1318	1330	12
Red rock	1330	1342	12

(OVER)

deep well

GRAUD PETTON NO. 1 WELL (Continued).

	Top.	Bottom.	Thickness.
Big Injun Sand, gray (6-5/8" casing set at 1418')	1342	1372	30
Slate, black	1372	1405	33
Sand slate, dark	1405	1742	337
Lime, black	1742	1788	46
Slate, gray	1788	1887	99
Shale, brown <i>Coles</i>	1887		
Berea Sand, white (STM) (Berea gas gauged 60,000 cu. ft.)	1887	1902	15
Lime, black	1902	1970	68
Slate, dark	1970	2285	315
Shale, brown	2285	2358	73
Lime, black	2358	2368	10
Shale, broken	2368	2690	322
Shale, black	2690	2710	20
Slate, gray	2710	2745	35
Lime shells, black	2745	2750	5
Shale, brown (gas, 2805-2910', 260 M.)	2750	3040	290
Slate, gray	3040	3290	250
Slate, black	3290	3324	34
Shale, brown	3324	3439	115
Shale (Corniferous) Lime	3439	3441	2
Total depth		3441	

(46)

34

WEST VIRGINIA DEPARTMENT OF MINES

OIL AND GAS DIVISION

PRELIMINARY DATA SHEET NO. 1

File No. Lin-113

Well No. I

Garnett L. Dial ~~owner~~ of Branchland, W Va,

on the Claud Peyton Farm

containing ~~##~~ 64 acres. Location Branchland

Sheridan District, in Lincoln County, West Virginia

The surface of the above tract is owned in fee by Claud Peyton

of _____ address, and the mineral rights are owned by

Garnett L. Dial of Branchland

The oil and gas privileges are held under lease by the above named company, and this well is drilled under permit

No. _____ issued by the West Virginia Department of Mines, Oil and Gas Division

_____ 1932

Elevation of surface at top of well, _____ Spirit Barometric.

The number of feet of the different sized casings used in the well.

_____ feet _____ size. Wood conductor.

68 ft 6 in feet 10 size, csg. 1 1/8 feet 6 5/8 sized csg.

1950 feet 3 tubing size, csg. _____ feet _____ sized csg.

_____ feet _____ size, csg. _____ feet _____ sized csg.

Hook wall packer of 6 5/8 x 3 size, set at 1950

_____ packer of _____ size, set at _____

_____, in casing perforated at _____ feet to _____ feet.

_____, in casing perforated at _____ feet to _____ feet.

Coal was encountered at _____ feet, thickness _____ inches, and at _____

feet; thickness _____ inches; and at _____ feet; thickness _____ inches.

Liners were used as follows: (Give details) _____

April 20 1932 Date.

Approved _____, Owner.

By _____ (TITLE)

Name	Color	Character	Oil, Gas or Water	Top	Bottom	Thickness	Total Depth	Remarks
Surface	Brown			0	3	3		
Sand & Gravel	Gray			3	40	37		
Blue Mud				40	43	3		
Quick-sand				43	60	17		
Sand	brown			60	70	10		
Slate	black	Fresh water	4 bbl pr. hr.	70	100	30		
Sand	white			100	120	20		
Slate	gray			120	140	20		
Sand	white			140	160	20		
Slate	black			160	200	40		
Sand	gray			200	340	140		
Slate	gray			340	410	70		
Sand	white			410	440	30		
Slate	gray			440	450	10		
Sand	gray			450	475	25		
Slate	gray			475	550	75		
Sand	salt	salt water	775	550	795	245		
Slate	black			795	803	8		
Sand	white			803	868	65		
Slate	white			868	882	14		
Sand	gray			882	940	58		
Slate	gray			940	947	7		
Lime	black			947	957	10		
Slate	gray			957	965	8		
Sand	black			965	995	30		
Sand	maxon			995	1005	10		
Rock	red			1005	1008	3		
Sandy lime	black			1008	1099	91		
Slate	gray			1099	1102	3		
Lime little	black			1102	1132	30		
Pencil cave	black			1132	1134	2		
Big lime	white			1134	1318	184		
Slate	black			1318	1330	12		
Red rock				1330	1342	12		
Big injun	gray	6 5/8 casing set	I418	1342	1372	30		
Slate	black			1372	1405	33		
Sand slate	dark			1405	1742	337		
Lime	black			1742	1788	46		
Slate	gray			1788	1887	101		
Shale	brown			1887	1887			
Berea sand	white	steel line measurement		1887	1902	15		
Lime black		Berea gaged	60.000	1902	1970	68		
Slate	dark			1970	2285	315		
Shale	Brown			2285	2358	73		
Lime	black			2358	2368	10		
Shale	broken			2368	2690	322		
Shale	black			2690	2710	20		
Slate	gray			2710	2745	35		
Lime shells	black			2745	2750	5		
Shale	brown	gas from	2805 to 2910	2750	3040	290		
Slate	gray		260.000	3040	3290	250		
Slate	black			3290	3324	34		
Shale	brown			3324	3439	115		
Lintin lime				3439			total dept 3441	
Well shot	3439 to 3324	1000	geleton kn ow increase					
" "	3040 to 2750		with 2500 lbs geleton after cleaning out					
Eight days	well shot		in four hundred thousand					
inch tubing	set		on huck wall packer at 1950 ft.					
Drilling	commenced	Jan. 16.	1932					
Drilling	completed	April 20.	1932					
Well tubed		April 28.	1932					
M. Driller	Leo Dial	Huntington	W Va.					
M. Driller	H H. Dial	Branchland	W Va.					
Well located on the Claud Peyton farm on the waters of Guyandott river near Branchland W Va. Sheridan. District Lincoln. Co. W Va.								