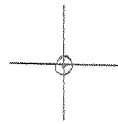


LATITUDE 39° 22' 30"

82° 07' 30" LONGITUDE



7.5 OGIS topo location

7.5' 10c	<u>2.55S</u>	15' 10c	<u>5.43S</u>
	<u>1.32W</u>	(calc.)	<u>3.58W</u>

Comp. _____

Farm _____

Milton C

Quad WEST HAMLIN 7 1/2'

County LINCOLN

District CARROLL

WELL LOCATION MAP

File No. 043 - 1166

ALLEGHENY GAS CORPORATION

NAME OF COMPANY

Lease No. 43

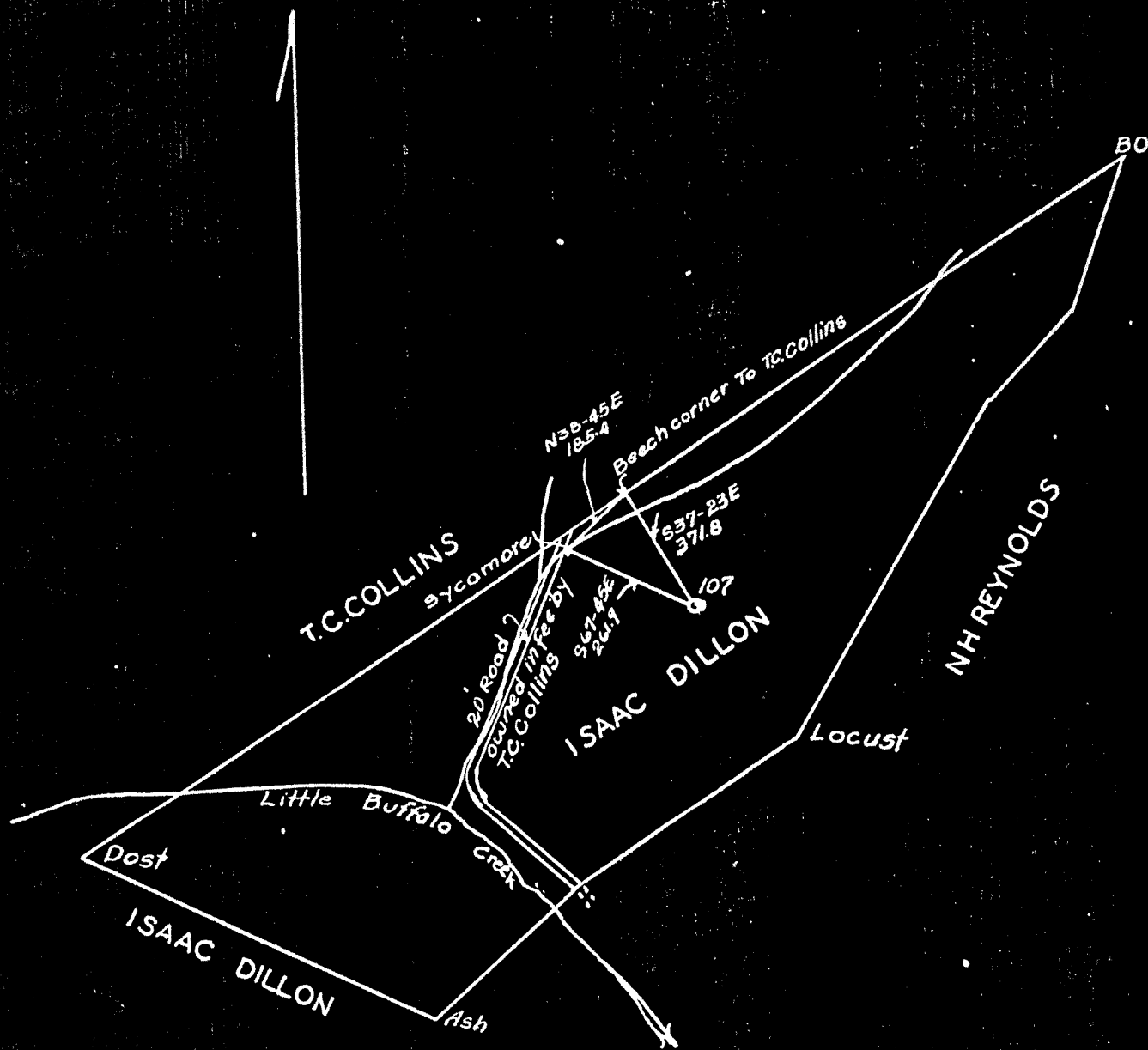
Work Order No. 44

CHARLESTON, W. VA.

PLAT OF PROPOSED LOCATION OF WELL No. 107

being Well No. ~~107~~ 1 on Isaac Dillon Tract of 40 acres.

Located in Carroll District, Lincoln County.



Scale 1" = 400

ENGINEER'S CERTIFICATE

I, the undersigned, hereby certify that this map is correct and shows all the information to the best of my knowledge and belief, required by the oil and gas section of the Mining Laws of West Virginia.

STATE OF WEST VIRGINIA,

COUNTY OF Kanawha, S.S.

[Signature]
Engineer.

Acknowledged before me a Notary Public, in and for the State and County aforesaid this 19th day

of September, 19 30

[Signature]
Notary Public.

My Commission expires April 1st, 1935

043-66

WEST VIRGINIA DEPARTMENT OF MINES

OIL AND GAS DIVISION

PRELIMINARY DATA SHEET NO. 1

File No. 66

Well No. 107

Allegheny Gas Corporation Company, of Charleston,

West Virginia on the Isaac Dillon Farm

containing 40 acres. Location

Carroll District, in Lincoln County, West Virginia

The surface of the above tract is owned in fee by Isaac Dillon & Julia Dillon

of Hamlin, West Virginia address, and the mineral rights are owned by

of

The oil and gas privileges are held under lease by the above named company, and this well is drilled under permit

No. Lin. 66 issued by the West Virginia Department of Mines, Oil and Gas Division

October 27, 1930

Elevation of surface at top of well, Spirit Barometric.

The number of feet of the different sized casings used in the well.

32 feet 10" size. Wood conductor.

1755 feet 6-5/8" size, csg. 374 feet 8 1/4" sized csg.

Tubing 1988 feet 3" size, csg. feet sized csg.

" 221 feet 3" size, csg. feet sized csg.

Oil Well Stop. packer of 6-5/8 x 2 x 3 size, set at 1988'

packer of size, set at

, in casing perforated at 2186 feet to 2187 feet.

, in casing perforated at feet to feet.

Coal was encountered at 475 - 477 feet; thickness 24 inches, and at

feet; thickness inches; and at feet; thickness inches.

Liners were used as follows: (Give details)

Copied

November 9, 1933 Date.

Approved ALLEGHENY GAS CORPORATION Owner.

By Engineer.

NOV 10 1933

Well No. 107
Lin. 66

ALLEGHENY GAS CORPORATION Company
401 Union Building Address
Charleston, West Virginia
Well No. 107

COMPLETION DATA SHEET
No. 2
FORMATION RECORD

Name	Color	Character	Oil, Gas or Water	Top	Bottom	Thickness	Total Depth	Remarks
Surface								
Clay				00	45			
Sand				45	90			
Slate				90	160			
Lime				160	200			
Slate				200	245			
Sand				245	320			
Slate				320	340			
Lime				340	350			
Slate				350	370			
Lime				370	400			
Slate				400	410			
Sand				410	475			
Coal				475	477			
Slate				477	490			
Sand				490	550			
Slate				550	575			
Sand				575	650			
Slate				650	665			
Sand				665	700			
Slate				700	995			
Salt Sand				995	1300			
Slate				1285	1260			
Slate				1300	1356			
Maxon Sand				1356	1370			
Slate				1370	1385			
Little Line				1385	1420			
Pencil Cave				1420	1425			
Big Line				1425	1604			
Slate				1604	1624			
Injun Sand				1624	1709			
Slate				1709	1719			
Shell				1719	1724			
Slate				1724	1729			
Slate				1729	1745			
Shell				1745	1765			
Slate & Shells				1765	1978			
Shell				1978	1995			
Slate & Shells				1995	2140			
Shale Brown				2140	2168			
Berea Sand				2168	2187			
Slate				2187	2206			
Shell				2206				
Bottom of Hole					2209			

Well was ~~shot~~ shot at 2169 - 2187 feet; well was shot at _____ feet.

Fresh water at 80' - 1 1/2 Bbls. per hour feet; fresh water at 425' - 1 Bbl. per hour feet.

producing Salt " " 1030 - 1040 Hole full
Well was _____ hole.

November 27, 1930
Date

Approved ALLEGHENY GAS CORPORATION
Owner

NOTE: All bottom formations must be noted as indicated above and all key-rocks and oil and gas sands must be recorded under their proper geological names in the district as well as any local names commonly used in the district for such strata.

NOV 10 1933

Lin #66

Carroll District, Lincoln County, W. Va.
 Allegheny Gas Corporation, Charleston, W. Va.
 On 40 acres, surface owned by Isaac Dillon and Julia Dillon,
 Hamlin, W. Va.

Drilled under permit Lin-66, issued Oct. 27, 1930.
 No elevation given.

10" conductor, 32'; 8 1/2", 37 1/2'; 6-5/8", 1755'; 2" tubing, 1988';
 3" tubing, 221'.

Oil Well Step packer, 6-5/8" x 2 x 3, set at 1988'.

Casing perforated at 2186-2187'.

Coal was encountered at 475-477'.

Completion reported Nov. 27, 1930. (Filed Nov. 9, 1933), with
 Dept. of Mines.

Well was shot at 2169-2187'.

Fresh water, 80', 1 1/2 bbls. per hour; fresh water at 425', 1 bbl.
 per hour; salt water at 1030', 1040', hole full.

	Top.	Bottom.
Surface clay	0	45
Sand	45	90
Slate	90	160
Lime	160	200
Slate	200	245
Sand	245	320
Slate	320	340
Lime	340	350
Slate	350	370
Lime	370	400
Slate	400	410
Sand	410	475
Coal	475	477
Slate	477	490
Sand	490	550
Slate	550	575
Sand	575	650
Slate	650	665
Sand	665	700
Slate	700	995
Salt Sand	995	1300
Slate	1300	1356
Maxton Sand	1356	1370
Slate	1370	1385
Little Lime	1385	1420
Pencil Cave	1420	1425
Big Lime	1425	1604
Slate	1604	1624
Big Injun Sand	1624	1709
Slate	1709	1719
Shell	1719	1724
Slate	1724	1729
Slate	1729	1745
Shell	1745	1765
Slate and shells	1765	1978
Shell	1978	1995
Slate and shells	1995	2140
Shale, brown	2140	2168
Berea Sand	2168	2187
Slate	2187	2206
Shell	2206	
Total depth		2209