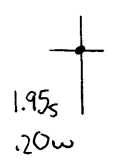


Latitude

Longitude



Topo Location

7.5' Loc. _____ 15' Loc. _____
 _____ (calc.) _____

Company _____

Farm _____

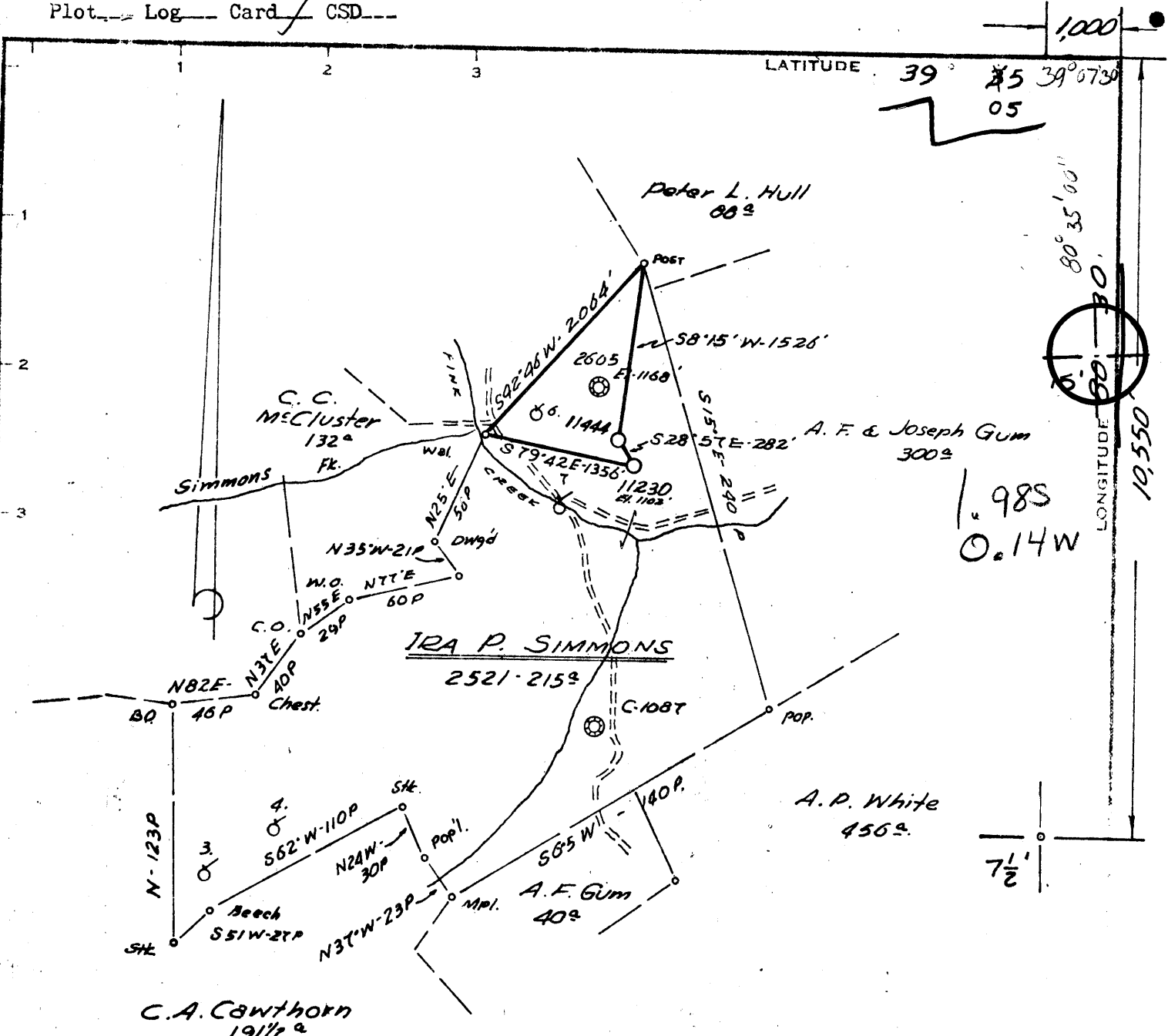
15' Quad _____
(sec.)

7.5' Quad Camden

District Freemans Creek

WELL LOCATION PLAT

County 041 Permit 30824



1" IN 200'
 LEVELS FROM CONSOLIDATED GAS
 SUPPLY CORP. WELL 11444 ELEV. 1119'

No. location
 and Deeper
 Amendment

7/21/78
 MAP SHEET 09 S25 E1 FB 1901 PG 16-17

Company **CONSOLIDATED GAS SUPPLY CORP.**
 Address **CLARKSBURG, WVA.**
 Name **IRA P. SIMMONS**
 Tract Ac. **215** Case No. **2521**
 (A.P. Farm) No. Serial No. **11230**
 Elevation (Spirit Level) **1102' VADIS 15**
 Quadrangle **CAMDEN, WVA. NW.**
 County **LEWIS** District **FREEMANS CREEK**
 Engineer **Warren M. Radcliffe**
 Engineer's Registration No. **L.L.S. 74**
 File No. Drawing No.
 Date **10-11-77** Scale **1" = 1320'**

STATE OF WEST VIRGINIA
 DEPARTMENT OF MINES
 OIL AND GAS DIVISION
 CHARLESTON

WELL LOCATION MAP
 FILE NO. **LEW-824-A**

Denotes location of well on United States
 Topographic Maps, scale 1" = 62,500'. Latitude
 and longitude lines being represented as border
 lines as shown.

AUG 7 1978

Denotes one inch spaces on border line of
 original tracing.

47-041