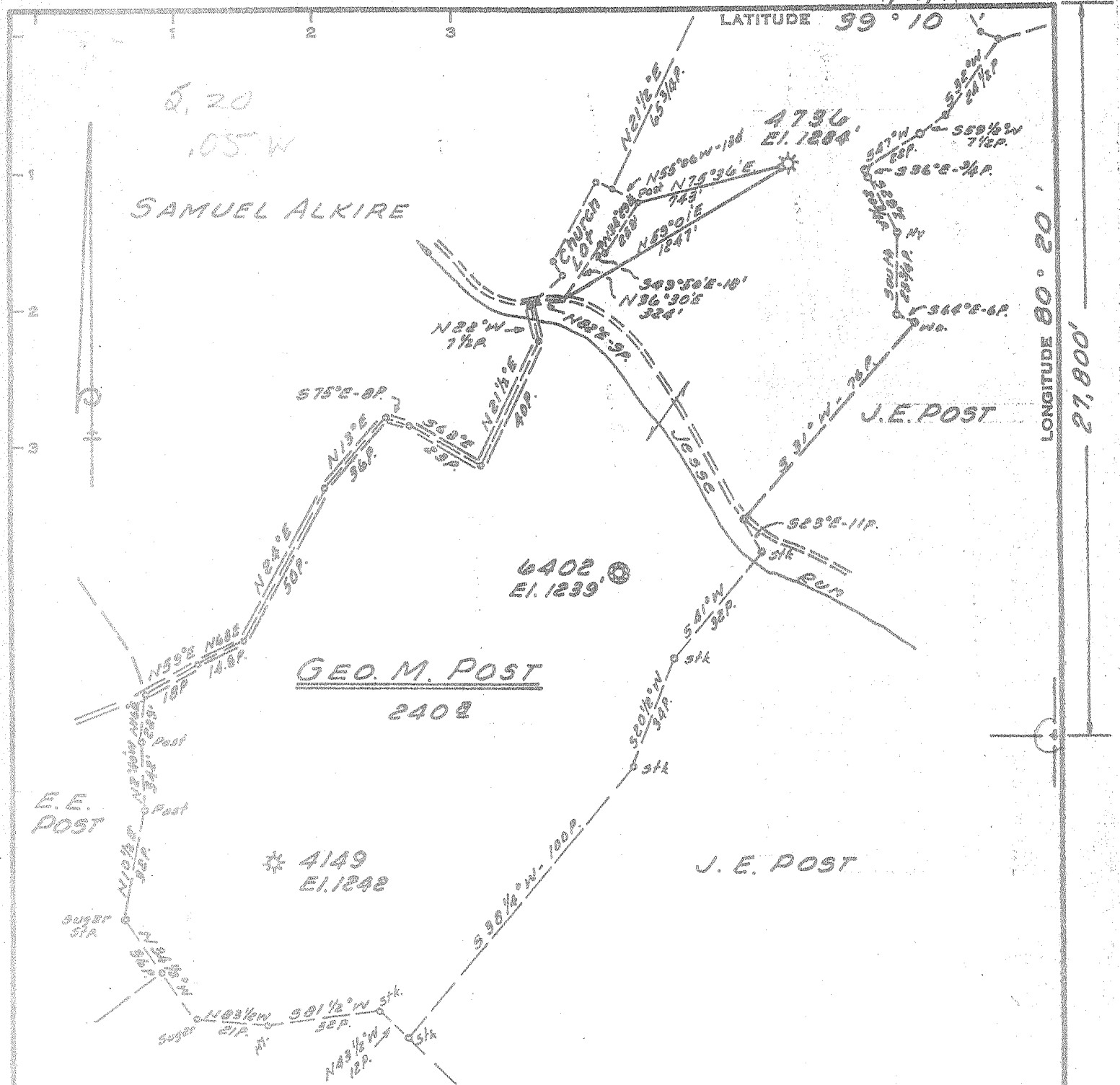


950'  
1/12/71 CEN  
LATITUDE 99° 10'  
LONGITUDE 80° 20'  
27,800'



Minimum Error of Closure 1' IN 200'  
 Source of Elevation Road Fork at Church. Elevation-1078'  
 "I, the undersigned, hereby certify that this map is correct to the best of my knowledge and belief and shows all the information required by paragraph 6 of the rules and regulations of the oil and gas section of the mining laws of West Virginia."

- New Location
- Drill Deeper
- Abandonment

Issued-1/12/71

MAPSHT. 57; 526-E14, FB. 541 P. 15

Company CONSOLIDATED GAS SUPPLY CORP.  
 Address CLARKSBURG, WEST VIRGINIA  
 Farm GEO. M. POST  
 Tract \_\_\_\_\_ Acres 240 Lease No. 23088  
 Well (Farm) No. \_\_\_\_\_ Serial No. 4736  
 Elevation (Spirit Level) 1284'  
 Quadrangle WESTON  
 County LEWIS District HACKERS CR.  
 Engineer Guy H. Bradley  
 Engineer's Registration No. 2425  
 File No. \_\_\_\_\_ Drawing No. \_\_\_\_\_  
 Date JAN. 8, 1971 Scale 1" = 40' POLAR

STATE OF WEST VIRGINIA  
 DEPARTMENT OF MINES  
 OIL AND GAS DIVISION  
 CHARLESTON

WELL LOCATION MAP  
 FILE NO. New-795 (A)

+ Denotes location of well on United States Topographic Maps, scale 1 to 62,500, latitude and longitude lines being represented by border lines as shown.  
 — Denotes one inch spaces on border lines of original tracing.



RECEIVED

JAN 12 1971

STATE OF WEST VIRGINIA  
DEPARTMENT OF MINES  
OIL AND GAS WELLS DIVISION

- Rotary
- Spudder
- Cable Tools  XXX
- Storage

Quadrangle WESTON  
Permit No. new-795(A)

WELL RECORD

Oil or Gas Well Gas - Dry  
(KIND)

Company Consolidated Gas Supply Corporation  
Address Clarksburg, W. Va.  
Farm G. W. Post Acres 240  
Location (waters) \_\_\_\_\_  
Well No. 4736 Elev. 1284  
District Hackers Creek County Lewis  
The surface of tract is owned in fee by \_\_\_\_\_  
Address \_\_\_\_\_  
Mineral rights are owned by \_\_\_\_\_  
Address \_\_\_\_\_  
Drilling commenced 2-26-17  
Drilling completed 5-30-17  
Date Shot 6-2-17 From 5th Sand To \_\_\_\_\_  
With 20 Qts. Nitro

Casing and Tubing	Used in Drilling	Left in Well	Packers
Size			Kind of Packer
16			
13			
10	353	None	Size of
8 1/4			
6 3/8	1632	1632	Depth set
5 3/16			
4 1/2			
3			Perf. top
2	2394	419	Perf. bottom
Liners Used			Perf. top
			Perf. bottom

Open Flow \_\_\_\_\_ /10ths Water in \_\_\_\_\_ Inch  
\_\_\_\_\_ /10ths Merc. in \_\_\_\_\_ Inch  
Volume Old well - Exhausted Cu. Ft.  
Rock Pressure Not taken lbs. hrs.  
Oil None bbls., 1st 24 hrs.  
WELL ACIDIZED (DETAILS) No  
WELL FRACTURED (DETAILS) No

Attach copy of cementing record.  
CASING CEMENTED \_\_\_\_\_ SIZE \_\_\_\_\_ No. Ft. \_\_\_\_\_ Date \_\_\_\_\_  
Amount of cement used (bags) No cementing  
Name of Service Co. \_\_\_\_\_  
COAL WAS ENCOUNTERED AT None FEET \_\_\_\_\_ INCHES  
\_\_\_\_\_ FEET \_\_\_\_\_ INCHES FEET \_\_\_\_\_ INCHES  
\_\_\_\_\_ FEET \_\_\_\_\_ INCHES FEET \_\_\_\_\_ INCHES

RESULT AFTER TREATMENT (Initial open Flow or bbls.) \_\_\_\_\_  
ROCK PRESSURE AFTER TREATMENT \_\_\_\_\_ HOURS \_\_\_\_\_  
Fresh Water 630' Feet \_\_\_\_\_ Salt Water \_\_\_\_\_ Feet \_\_\_\_\_  
Producing Sand Gas exhausted - Will abandon Depth \_\_\_\_\_

Formation	Color	Hard or Soft	Top	Bottom	Oil, Gas or Water	Depth	Remarks
Dunkard Sand			340	390	Water	630'	
Salt Sand			825	1185			
Injun Sand			1570	1705			
Gantz Sand			1838	1858			
50 Foot Sand			1870	1900			
30 Foot Sand			1918	1954			
Stray Sand			1970	2000			
Gordon Sand			2080	2295			
4th Sand			2322	2355	Gas	2325-55'	
5th Sand			2387	2390	Gas	2387'	
Total Depth				2446'			

Consolidated Gas Supply Corporation  
145 West Main Street  
Clarksburg, W. Va.