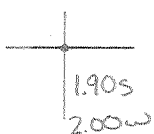


**Latitude**

**Longitude**



**Topo Location**

7.5' Loc. \_\_\_\_\_ 15' Loc. \_\_\_\_\_  
 \_\_\_\_\_ (calc.) \_\_\_\_\_

**Company** \_\_\_\_\_

**Farm** \_\_\_\_\_

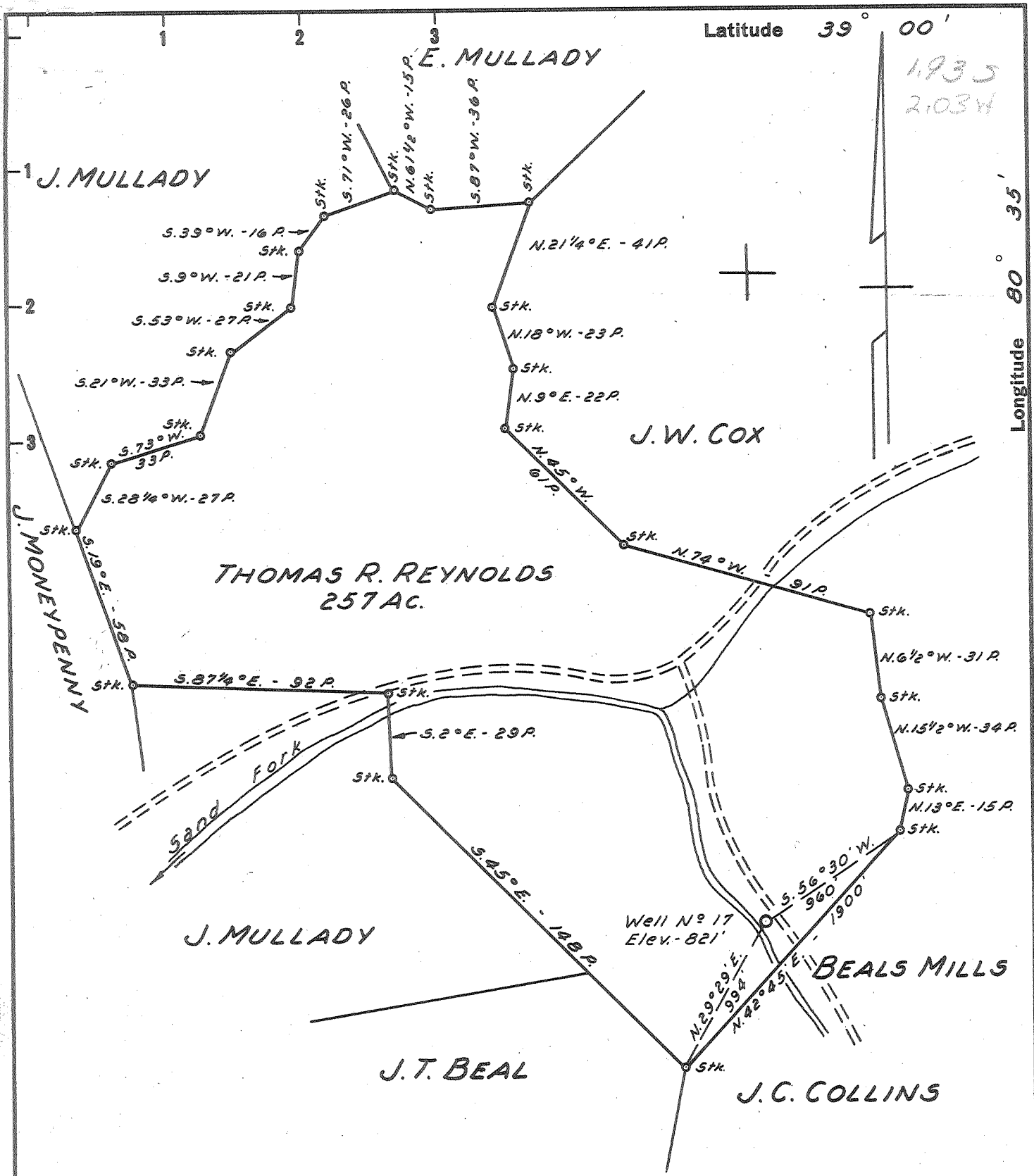
**15' Quad** \_\_\_\_\_  
(sec.)

**7.5' Quad** Pelerson

**District** Court House

**WELL LOCATION PLAT**

**County** 041 **Permit** 36751



- New Location ..
- Drill Deeper .....
- Abandonment .....

NOTE: This well has been previously operated by South Penn Oil Co., Parkersburg, W. Va.

Company <u>RICHARD JACKSON INC.</u>	
Address <u>614 EAST MAIN ST.</u> <u>CLARKSBURG, W. VA.</u>	
Farm <u>THOMAS R. REYNOLDS</u>	
Tract _____	Acres <u>257</u> Lease No. _____
Well (Farm) No. <u>17</u>	Serial No. _____
Elevation (Spirit Level) <u>821'</u>	
Quadrangle <u>BURNSVILLE</u>	
County <u>LEWIS</u>	District <u>COURT HOUSE</u>
Engineer <u>JOHN W. HAMILTON</u>	
Engineer's Registration No. <u>2274</u>	
File No. _____	Drawing No. _____
Date <u>OCT. 30, 1960</u> Scale <u>1" = 800'</u>	

STATE OF WEST VIRGINIA  
DEPARTMENT OF MINES  
OIL AND GAS DIVISION  
CHARLESTON

**WELL LOCATION MAP**  
FILE NO. Lew-751-A

+ Denotes location of well on United States Topographic Maps, scale 1 to 62,500, latitude and longitude lines being represented by border lines as shown.

- Denotes one inch spaces on border line of original tracing.



547

STATE OF WEST VIRGINIA  
DEPARTMENT OF MINES  
OIL AND GAS DIVISION

Quadrangle Burnsville  
Permit No. 751A-

WELL RECORD

Oil or Gas Well Oil  
(KIND)

Company Richard Jackson, Inc.  
Address 614 E. Main St., Clarksburg, W. Va.  
Farm T. R. Reynolds Acres 257  
Location (waters) \_\_\_\_\_  
Well No. 17 Elev. 601  
District Court House County Lewis  
The surface of tract is owned in fee by T. R. Reynolds  
Weston, W. Va. Address \_\_\_\_\_  
Mineral rights are owned by Same Address \_\_\_\_\_

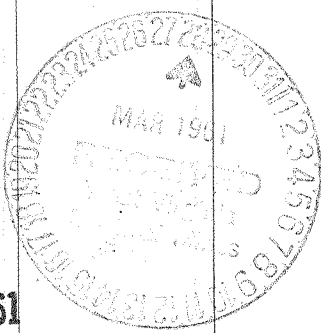
Casing and Tubing	Used in Drilling	Left in Well	Packers
Size			Kind of Packer
16	<del>1100</del>		
13			
10	<u>174</u>		Size of
8 3/4	<u>720</u>		
6 5/8	<u>1871</u>	<u>Visible</u>	Depth set
5 3/16			
3			Perf. top
2			Perf. bottom
Liners Used			Perf. top
			Perf. bottom

Drilling commenced \_\_\_\_\_  
Drilling completed 1902  
Date Shot 1-28-02-1-31-02-8-29-02 From \_\_\_\_\_ To 2665-2477-2478  
With 20 qts. 40 qts. 60 qts.  
Open Flow /10ths Water in \_\_\_\_\_ Inch  
/10ths Merc. in \_\_\_\_\_ Inch  
Volume \_\_\_\_\_ Cu. Ft.  
Rock Pressure \_\_\_\_\_ lbs. \_\_\_\_\_ hrs.  
Oil \_\_\_\_\_ bbls., 1st 24 hrs.  
WELL ACIDIZED \_\_\_\_\_  
WELL FRACTURED \_\_\_\_\_

CASING CEMENTED \_\_\_\_\_ SIZE \_\_\_\_\_ No. Ft. \_\_\_\_\_ Date \_\_\_\_\_  
COAL WAS ENCOUNTERED AT \_\_\_\_\_ FEET \_\_\_\_\_ INCHES  
\_\_\_\_\_ FEET \_\_\_\_\_ INCHES FEET \_\_\_\_\_ INCHES  
\_\_\_\_\_ FEET \_\_\_\_\_ INCHES FEET \_\_\_\_\_ INCHES

RESULT AFTER TREATMENT \_\_\_\_\_  
ROCK PRESSURE AFTER TREATMENT \_\_\_\_\_  
Fresh Water \_\_\_\_\_ Feet Salt Water \_\_\_\_\_ Feet

Formation	Color	Hard or Soft	Top	Bottom	Oil, Gas or Water	Depth	Remarks
Pitts. Coal			140				
Big Line			1805	1860			
Stray Sand			2445	2460			
Gordon Sand			2576	2511			
Oil Pay			2480				
Total Depth			2502 Plugged off at		2502		



AUG 2 1961

(over)