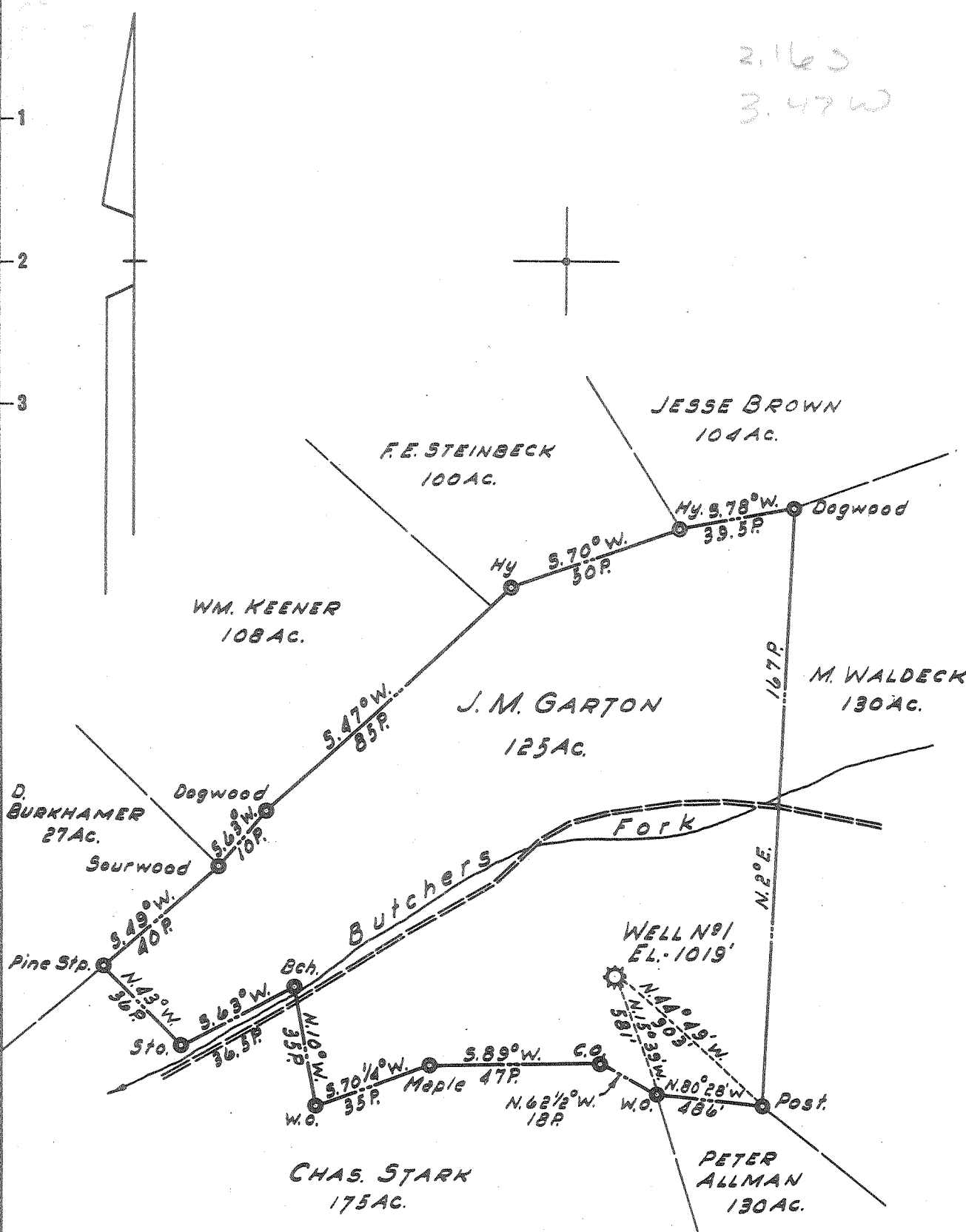


Latitude 39° 05'

2.16 S  
3.47 W

Longitude 80° 35'



New Location   
 Drill Deeper   
 Abandonment  Formerly Hope Natural Gas Co. Well No 4774

Company LURAY LAND, INC.  
 Address PT. PLEASANT, WEST VA.  
 Farm J. M. GARTON  
 Tract \_\_\_\_\_ Acres 125 Lease No. \_\_\_\_\_  
 Well (Farm) No. 1 Serial No. \_\_\_\_\_  
 Elevation (Spirit Level) 1019'  
 Quadrangle VADIS  
 County LEWIS District FREEMANS CRK.  
 Engineer H. P. SUTER  
 Engineer's Registration No. 1805  
 File No. \_\_\_\_\_ Drawing No. \_\_\_\_\_  
 Date 12-1-58 Scale 1" = 40 POLES

STATE OF WEST VIRGINIA  
 DEPARTMENT OF MINES  
 OIL AND GAS DIVISION  
 CHARLESTON

**WELL LOCATION MAP**  
 FILE NO. LEW-698-A

+ Denotes location of well on United States Topographic Maps, scale 1 to 62,500, latitude and longitude lines being represented by border lines as shown.

- Denotes one inch spaces on border line of original tracing.



STATE OF WEST VIRGINIA  
DEPARTMENT OF MINES  
OIL AND GAS DIVISION

794

Quadrangle Yodis  
Permit No. 698-A

WELL RECORD

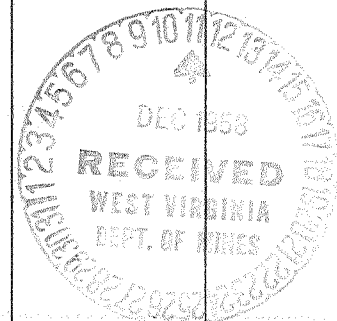
Oil or Gas Well (KIND)

Company Lurray Land Co.  
Address Room 40 Capitol City Bldg., Charleston W. Va  
Farm J. M. Garton Acres 125  
Location (waters) Freemans Creek  
Well No. 4774 Elev. 1019'  
District Pirck County Lewis  
The surface of tract is owned in fee by J. M. Garton  
Address \_\_\_\_\_  
Mineral rights are owned by \_\_\_\_\_  
Address \_\_\_\_\_  
Drilling commenced Mar. 12, 1917  
Drilling completed June 22, 1917  
Date Shot 6-26-17 From 2283 To 2300  
With 20 qts.  
Open Flow /10ths Water in \_\_\_\_\_ Inch  
/10ths Merc. in \_\_\_\_\_ Inch  
Volume 50,400 Cu. Ft.  
Rock Pressure \_\_\_\_\_ lbs. \_\_\_\_\_ hrs.  
Oil \_\_\_\_\_ bbls., 1st 24 hrs.  
Fresh water \_\_\_\_\_ feet \_\_\_\_\_ feet  
Salt water 1505 feet 1480 feet

Casing and Tubing	Used in Drilling	Left in Well	Packers
Size			Kind of Packer
16			
18			B. H
10	131' 11"		Size of 8x6
8 1/4	897'	897'	
6 5/8	1606'		Depth set 1606
5 3/16	2203'		
3	1021' 7"	1000	Perf. top
3 X	1012		Perf. bottom
Liners Used			Perf. top
			Perf. bottom

CASING CEMENTED \_\_\_\_\_ SIZE \_\_\_\_\_ No. Ft. \_\_\_\_\_ Date \_\_\_\_\_  
COAL WAS ENCOUNTERED AT \_\_\_\_\_ FEET \_\_\_\_\_ INCHES  
\_\_\_\_\_ FEET \_\_\_\_\_ INCHES FEET \_\_\_\_\_ INCHES  
\_\_\_\_\_ FEET \_\_\_\_\_ INCHES FEET \_\_\_\_\_ INCHES

Formation	Color	Hard or Soft	Top	Bottom	Oil, Gas or Water	Depth Found	Remarks
L. Dunkard			410	440			
B. Dunkard			485	535			
1st. Salt S.			770	795	G. 980		
2nd. Salt S.			810	848	992		
Maxon Sand			1470	1510	Water	1480	
B. Lime			1556	1592	Salt water	1505	
Injuñ sand			1592	1713	Gas & Oil	1596	
Squaw			1725	1905			
					Gas sand	565-645	
					3rd S. Sand	865-1012	
					L. Lime	1515-1534	
Stray Sand			2184	2194			
Fourth Sand			2283	2300	Gas	2288	
Fifth Sand			2400				
TOTAL DEPTH				2495 S.L.			
Filled up				1029			
Filled up				1000			



JUL 23 1959

