

LATITUDE 39° 05' 00"

05° 02' 08"

LONGITUDE



7'5 OGIS topo location

7.5' loc 1785 15' loc \_\_\_\_\_  
                  0.50W (calc.) \_\_\_\_\_

Company \_\_\_\_\_

Farm \_\_\_\_\_

Quad WESTON 7 1/2'

County LEWIS

District HACKERS CREEK

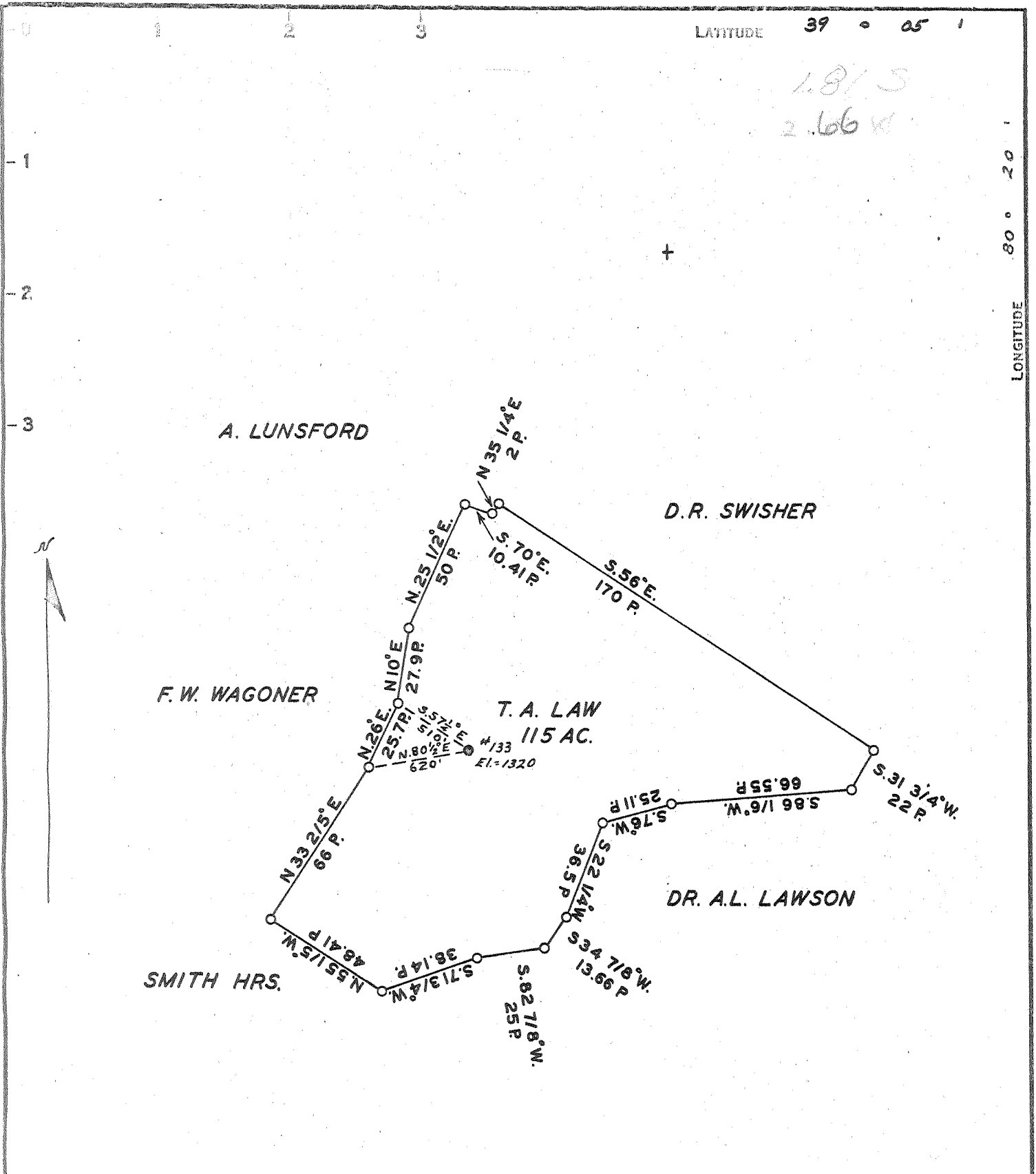
WELL LOCATION MAP

File No. 041-618A

LATITUDE 39 ° 05 ' 1

1.81 S  
2.66 W

LONGITUDE 80 ° 20 '



COAL OWNED BY \_\_\_\_\_

NEW LOCATION.....

DRILL DEEPER.....

ABANDONMENT.....

COMPANY CUMBERLAND & ALLEGHENY GAS CO.

ADDRESS 800 UNION TRUST BLDG. PGH. PA.

FARM T. A. LAW

TRACT \_\_\_\_\_ ACRES 115 LEASE No. 291

WELL (FARM) No. \_\_\_\_\_ SERIAL No. 133

ELEVATION (SPIRIT LEVEL) 1320'

QUADRANGLE WESTON

COUNTY LEWIS DISTRICT HACKERS CRK.

ENGINEER Thomas E. Vigen

ENGINEER'S REGISTRATION No. 1503

FILE No. \_\_\_\_\_ DRAWING No. V-13-861

DATE 24 July 1953 SCALE 1"=800

STATE OF WEST VIRGINIA  
DEPARTMENT OF MINES  
OIL AND GAS DIVISION  
CHARLESTON

WELL LOCATION MAP

FILE No. LEW-618-B

+ DENOTES LOCATION OF WELL ON UNITED STATES TOPOGRAPHIC MAPS. SCALE 1 TO 62,500, LATITUDE AND LONGITUDE LINES BEING REPRESENTED BY BORDER LINES AS SHOWN.

-- DENOTES ONE INCH SPACES ON BORDER LINE OF ORIGINAL TRACING.