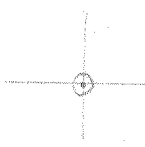


LATITUDE 39° 00' 00"

LONGITUDE 80° 32' 30"



7.5 OGIS topo location

7.5' loc 2263 15' loc _____
 1.37W (calc.) _____

Company _____

Farm _____

Quad PETERSON

County LEWIS

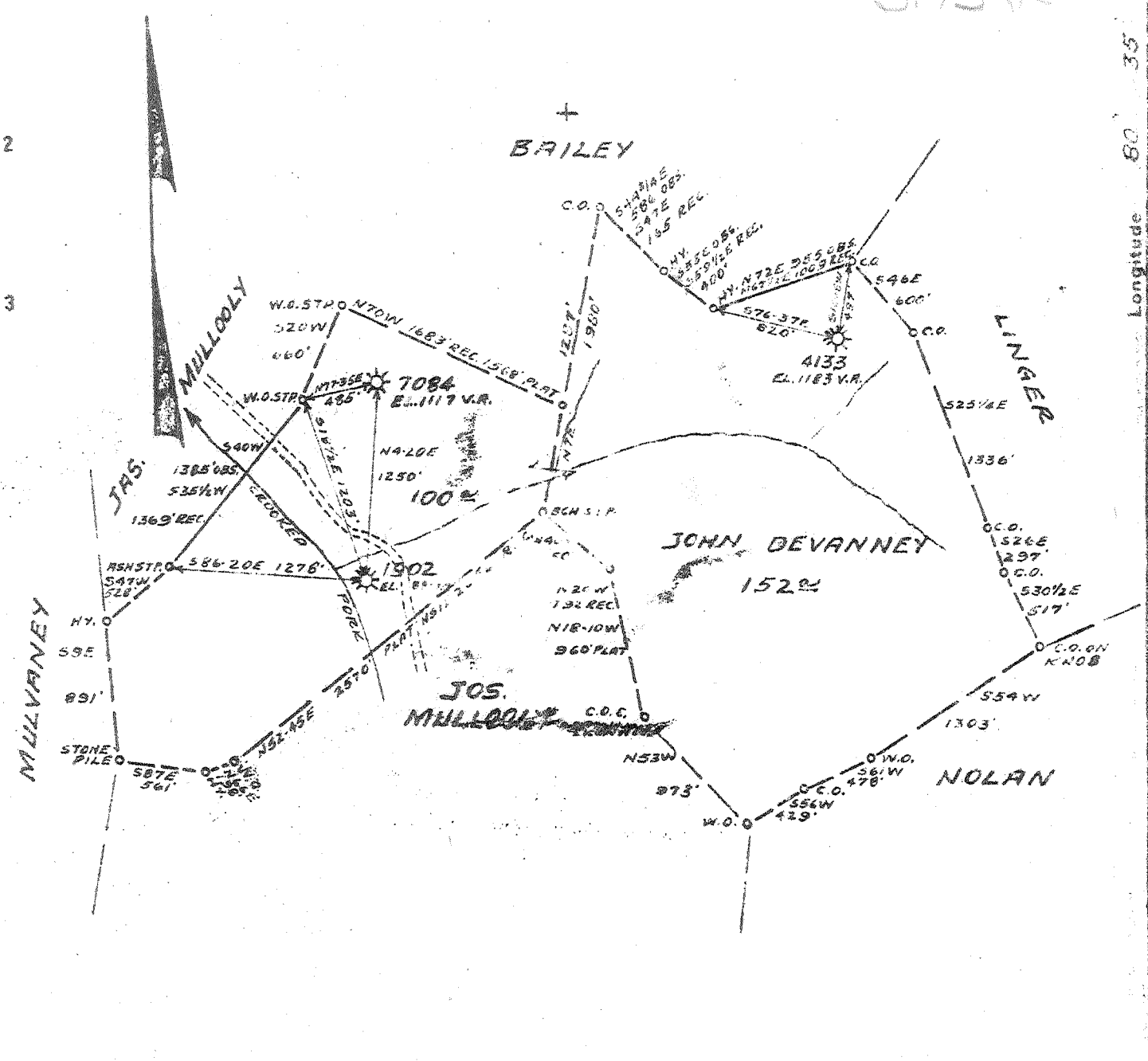
District COURT HOUSE

WELL LOCATION MAP

File No. 041-402A

2.03 S
3.73 W

Longitude 80 35



New Location
 Drill Deeper
 Abandonment **X 7084**

| | |
|-----------------------------|----------------------------------|
| Company | PITTSBURGH & W.VA. GAS CO. |
| Address | CLARKSBURG, WVA. |
| Farm | JOHN DEVANNEY |
| Tract | Acres 283 Lease No. 4443 |
| Well (Farm) No. | 1, 2, 3 Serial No. 7084 |
| Elevation (Spirit Level) | AS SHOWN |
| Quadrangle | BURNSVILLE N.E. 12-4 |
| County | LEWIS District COURTHOUSE |
| Engineer | Kenneth B. Moore |
| Engineer's Registration No. | |
| File No. | V-156 P 141 Drawing No. |
| Date | APRIL 15, 1948 Scale. 1" = 1000' |

STATE OF WEST VIRGINIA
 DEPARTMENT OF MINES
 OIL AND GAS DIVISION
 CHARLESTON

WELL LOCATION MAP
 FILE NO. LEW-403-A-#7084

+ Denotes location of well on United States Topographic Maps, scale 1 to 62,500. latitude and longitude lines being represented by border lines as shown.
 - Denotes one inch spaces on border line of original tracing

Return
 5372 4329



STATE OF WEST VIRGINIA
DEPARTMENT OF MINES
OIL AND GAS DIVISION

WELL RECORD

Oil or Gas Well "GAS"
(KIND)

Permit No. 403-A

Company Pittsburgh & West Va Gas Company.

Address Clarksburg, West Va.

Farm John Devanney Acres 283

Location (waters) Burnsville N/E. 1-2-4

Well No. 7034 Elev. 1177

District Court House County Lewis

The surface of tract is owned in fee by Joe. Mullooly
R.D./1 Address Roanoke, W. Va.

Mineral rights are owned by E. S. Bock
312 Natl. Bank of Address Charleston, W. Va.
Commerce Bldg.

Drilling commenced June 13th, 1916

Drilling completed August 7th, 1916

Date Shot _____ From _____ To _____

With _____

Open Flow _____ /10ths Water in _____ Inch
_____ /10ths Merc. in _____ Inch

Volume _____ Cu. Ft.

Rock Pressure _____ lbs. _____ hrs.

Oil _____ bbls., 1st 24 hrs.

Fresh water _____ feet _____ feet

Salt water _____ feet _____ feet

| Casing and Tubing | Used in Drilling | Left in Well | Packers |
|-------------------|------------------|--------------|----------------|
| Size | | | Kind of Packer |
| 16 | | | |
| 18 | | | |
| 10 | | | Size of |
| 8 1/4 | 842' | 842' | |
| 6 5/8 | 1985' | 1985' | Depth set |
| 5 3/16 | 2541' | 2541' | |
| 3 | | | Perf. top |
| 2 | | | Perf. bottom |
| Liners Used | | | Perf. top |
| | | | Perf. bottom |

CASING CEMENTED _____ SIZE _____ No. Ft. _____ Date _____

COAL WAS ENCOUNTERED AT 1168 FEET 36 INCHES
1270 FEET 60 INCHES
_____ FEET _____ INCHES
_____ FEET _____ INCHES

| Formation | Color | Hard or Soft | Top | Bottom | Oil, Gas or Water | Depth Found | Remarks |
|-----------------|--------|--------------|------|--------|-------------------|-------------|---------|
| Lime | Yellow | Soft | 0 | 12 | | | |
| Red Rock | Red | " | 12 | 110 | | | |
| Lime | Dark | Hard | 110 | 135 | | | |
| Red Rock | Red | Soft | 135 | 180 | | | |
| Lime | | Soft/Hard | 180 | 250 | Water | 185' | |
| Lime & Red Rock | | | 250 | 620 | | | |
| Sand | White | Hard | 620 | 640 | | | |
| Plate/Red Rock | | Soft | 640 | 745 | | | |
| Sand | White | Hard | 745 | 800 | | | |
| Plate | Black | Soft | 800 | 810 | | | |
| Red Rock | Red | " | 810 | 816 | | | |
| Lime | White | Hard | 816 | 836 | | | |
| Plate | Dark | Soft | 836 | 841 | | | |
| Lime | White | Hard | 841 | 851 | | | |
| Sand | " | " | 851 | 976 | | | |
| Plate | " | Soft | 976 | 1008 | | | |
| Sand | " | Hard | 1008 | 1095 | | | |
| Plate | Dark | Soft | 1095 | 1099 | | | |
| Sand | White | Hard | 1099 | 1125 | Water | 1103' | |
| Plate | Dark | Soft | 1125 | 1160 | | | |
| Lime | " | Hard | 1160 | 1168 | | | |
| Coal | Black | Soft | 1168 | 1171 | | | |
| Sand | White | Hard | 1171 | 1243 | | | |
| Plate | Dark | Soft | 1243 | 1262 | | | |
| Sandy Lime | " | Hard | 1262 | 1270 | | | |
| Coal | Black | Soft | 1270 | 1275 | | | |
| Plate/Shell | Dark | " | 1275 | 1350 | | | |
| Sand | White | Hard | 1350 | 1480 | | | |
| Plate | Dark | Soft | 1480 | 1508 | | | |
| Sand | White | Hard | 1508 | 1519 | Gas | 1515' | |
| Plate/Shell | Dark | Hard/Soft | 1519 | 1614 | | | |
| Sand | White | Hard | 1614 | 1654 | | | |
| Plate | " | Soft | 1654 | 1697 | | | |
| Red Rock | Red | Hard/Soft | 1697 | 1783 | | | |
| Lime | White | Hard | 1783 | 1808 | | | |
| Red Rock | Red | Soft | 1808 | 1816 | | | |
| Lime | White | Hard | 1816 | 1844 | | | |
| Red Rock | Red | Soft | 1844 | 1852 | | | |
| Lime | White | Hard | 1852 | 1870 | | | |

| Formation | Color | Hard or Soft | Top | Bottom | Oil, Gas or Water | Depth Found | Remarks |
|--------------|-------|--------------|------|--------|-------------------|-------------|---------|
| Slate | Dark | Soft | 1870 | 1880 | | | |
| Little Lime | White | Hard | 1880 | 1920 | | | |
| Pencil Cave | Dark | Soft | 1920 | 1925 | | | |
| Big Lime | White | Hard | 1925 | 1988 | | | |
| Big Lime | " | " | 1988 | 2155 | Sh. Gas | 2140' | |
| Slate Shells | | | 2155 | 2535 | | | |
| Sand | White | Hard | 2535 | 2556 | Gas | 2544-2551' | |
| Slate | Dark | Soft | 2556 | 2569 | | | |
| Sand | White | Hard | 2569 | 2600 | | | |
| Slate | Dark | Soft | 2600 | 2753 | | | |
| Sand | Light | Hard | 2753 | 2761 | | | |
| Slate | Dark | Soft | 2761 | 2764 | | | |
| Sand | " | Hard | 2764 | 2769 | | | |
| Un-recorded | | | 2769 | 2785 | | | |
| Total Depth | | | 2785 | | | | |

April 8th, 1948

Date _____, 19____

PITTSBURGH & WEST VA GAS COMPANY.

APPROVED _____, Owner

By W. M. Mastura
(Title)

COMPANY

Checked

Apr 4-1916

Record of Well No. 7084 Located on John Devanney Farm Apr/4/1916 19
 Court House District Lewis County West Virginia. State 480
 Division K District No. 13 Drilled under Well Order
 Rig built by John Craig Began May 19 16 Completed May 1916 19
 Well drilled by W. M. Barnhart Began June 13th 19 16 Completed Aug 7/1916 19
 Depth of Well 2785 feet Size of Hole 5-3/16" Producing Gas
 Elevation: 1117 G

CASED WITH

REMARKS

| AMOUNT | SIZE | KIND |
|--------|---------|------|
| 16' | 12" | Wood |
| 876' | 8 1/2" | Casg |
| 1985' | 6 5/8" | Casg |
| 2541' | 5 3/16" | Casg |

No 10" used, could not pull 8 1/2" casg Pulled 303' Left in 539'
 B.H.P. Pulled 1723' Left in 262'
 Pulled 2541' all out

COAL VEINS

FORMATIONS

| NAME | TOP | BOTTOM | OIL | GAS | WATER | REMARKS |
|--------------|------|--------|-----|-----|-------|------------------------|
| Big lime | 1925 | 1988 | | | | |
| Big Injun | 1988 | 2155 | | | | |
| Gordon stray | 2526 | 2556 | | | | |
| Gordon sand | 2569 | 2600 | | | | 2544 to 2551 3 1/2 Mcf |
| Fifth sand | 2764 | 2769 | | | | |

Plugged 4-28-16 to 4-30-16

| | | |
|---------|--------|---------|
| Aquasol | 2785 - | 2550 |
| Cement | 2550 - | 2540 |
| Aquasol | 2540 - | 2025 |
| Cement | 2025 - | 2015 |
| Aquasol | 2015 - | 1305 |
| Cement | 1305 - | 1250 |
| Aquasol | 1250 - | 1201 |
| Cement | 1201 - | 1148 |
| Aquasol | 1148 - | 860 |
| Cement | 860 - | 850 |
| Aquasol | 850 - | 5 |
| Cement | 5 - | Surface |

FIRST PRESSURE TEST IN 5-2/16" CASING

REMARKS

| | | |
|---------|------------|---------|
| 30 Sec. | 4 | lbs. |
| 1 Min. | 8 | " |
| 2 " | 15 | 24/31 " |
| 5 " | 36 | " |
| 10 " | 70 | " |
| 15 " | 20 Min 100 | " |
| 30 " | | " |

Open flow test 4/10 Merc 2"

Rock Pressure 135# " in 18 Hrs

Taken Aug 7th 19 16

By F. W. Lemley

WELL TUBED AND PACKED 19

VIZ:-

No tubing.

FIRST PRESSURE TEST IN TUBING

REMARKS

| | |
|---------|------|
| 30 Sec. | lbs. |
| 1 Min. | " |
| 2 " | " |
| 5 " | " |
| 10 " | " |
| 15 " | " |
| 30 " | " |

Rock Pressure " in

Taken 19

By

MATERIAL FOR THIS WELL RECEIVED FROM FOLLOWING SOURCES:

1 Old Rig Timbers, Lumber, and Rig Irons from Finster well No. 7045
5369' New Rig Lumber from C. N. Riddle.

FORMATIONS

| NAME | TOP | BOTTOM | OIL | GAS | WATER | REMARKS |
|----------------|------|--------|-----|------|--------------|---------|
| Clay | 00 | 12 | | | | |
| Red Rock | 12 | 110 | | | | |
| Lime | 110 | 125 | | | | |
| Red Rock | 125 | 180 | | | | |
| Lime | 180 | 250 | | | | |
| Lime | 250 | 620 | | | | |
| Sand | 620 | 640 | | | | |
| Slate | 640 | 745 | | | | |
| Sand | 745 | 800 | | | | |
| Slate | 800 | 810 | | | | |
| Red Rock | 810 | 816 | | | | |
| Lime | 816 | 836 | | | | |
| Slate | 836 | 841 | | | | |
| Lime | 841 | 851 | | | | |
| Sand | 851 | 976 | | | | |
| Slate | 976 | 1008 | | | | |
| Sand | 1008 | 1095 | | | | |
| Slate | 1095 | 1099 | | | | |
| Sand | 1099 | 1125 | | | 1103 | |
| Slate | 1125 | 1160 | | | | |
| Lime | 1160 | 1168 | | | | |
| Coal | 1168 | 1171 | | | | |
| Sand | 1171 | 1243 | | | | |
| Slate | 1243 | 1262 | | | | |
| Sandy Lime | 1262 | 1270 | | | | |
| Coal | 1270 | 1275 | | | | |
| Slate & Shells | 1275 | 1350 | | | | |
| Sand | 1350 | 1480 | | | | |
| Slate | 1480 | 1508 | | | | |
| Sand | 1508 | 1549 | | 1515 | | |
| Slate & Shells | 1549 | 1614 | | | | |
| Sand | 1614 | 1654 | | | | |
| Slate | 1654 | 1697 | | | | |
| Red Rock | 1697 | 1783 | | | | |
| Lime | 1783 | 1808 | | | | |
| Red Rock | 1808 | 1816 | | | | |
| Lime | 1816 | 1844 | | | | |
| Red Rock | 1844 | 1852 | | | | |
| Lime | 1852 | 1870 | | | | |
| Slate | 1870 | 1880 | | | | |
| Lime | 1880 | 1920 | | | | |
| Pencil Cave | 1920 | 1925 | | | | |
| Big Lime | 1925 | 1988 | | | | |
| Big Injun | 1988 | 2155 | | | 2140 | |
| Slate & Shells | 2155 | 2535 | | | | |
| Sand | 2535 | 2556 | | | | |
| Slate | 2556 | 2569 | | | 2544 to 2551 | |
| Sand | 2569 | 2600 | | | | |
| Slate | 2600 | 2753 | | | | |
| Sand | 2753 | 2761 | | | | |
| Slate | 2761 | 2764 | | | | |
| Sand | 2764 | 2769 | | | | |
| Slate | 2769 | 2785 | | | | |