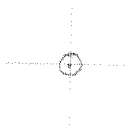


LATITUDE 39° 02' 30"

80° 27' 30"

LONGITUDE



7'5 OGIS topo location

7.5' loc	<u>2805</u>	15' loc	<u>5.685</u>
	<u>2.44W</u>	(calc.)	<u>267W</u>

Company _____

Farm Michael Mulady (7057)

Quad VADIS 7 1/2' 415'SC

County LEWIS

District COURTHOUSE

WELL LOCATION MAP

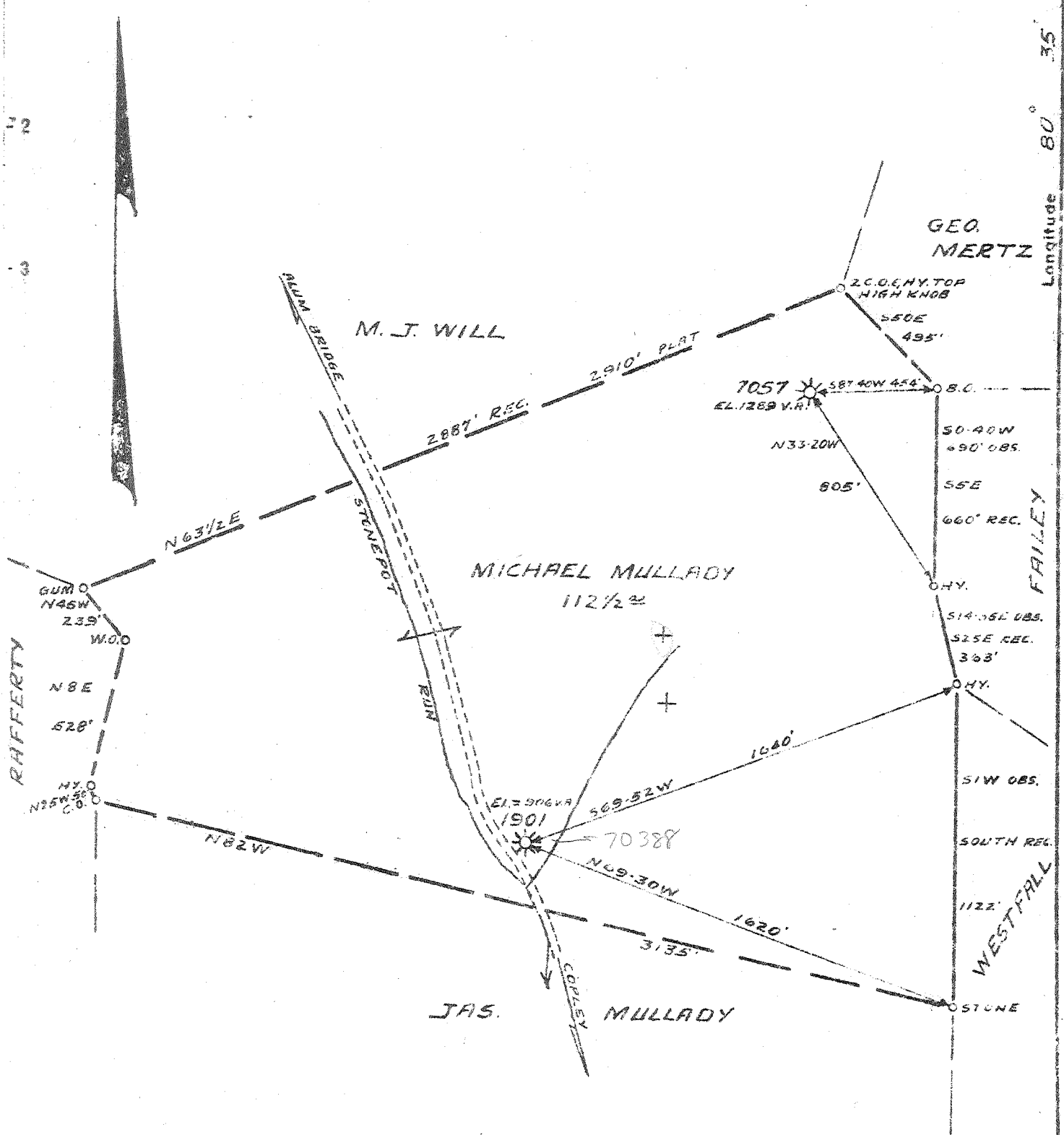
File No. 041-402A

LEWIS-402A

Latitude 30 05

5.81 S
2.79 W

Longitude 80 35



New Location
 Drill Deeper
 Abandonment 7057

Company PITTSBURGH E. W. VA. GAS CO.
 Address CLARKSBURG, W. VA.
 Farm MICHAEL MULLADY
 Tract _____ Acres 113 Lease No. 4422
 Well (Farm) No. 1, 2 Serial No. 1901
 Elevation (Spirit Level) AS SHOWN
 Quadrangle VADISS W. 4 S. BURNSVILLE NW 2 S
 County LEWIS District COURTHOUSE
 Engineer Kenneth B. Moore
 Engineer's Registration No. _____
 File No. V156 P 135 Drawing No. _____
 Date APRIL 7, 1948 Scale 1" = 500'

STATE OF WEST VIRGINIA
 DEPARTMENT OF MINES
 OIL AND GAS DIVISION
 CHARLESTON

WELL LOCATION MAP
 FILE NO. LEW-402-A-#7057

+ Denotes location of well on United States Topographic Maps, scale 1 to 62,500, latitude and longitude lines being represented by border lines as shown.

- Denotes one inch spaces on border lines of original tracing.



STATE OF WEST VIRGINIA
DEPARTMENT OF MINES
OIL AND GAS DIVISION

491

WELL RECORD

Oil or Gas Well "GAS"
(KIND)

Permit No. 7057

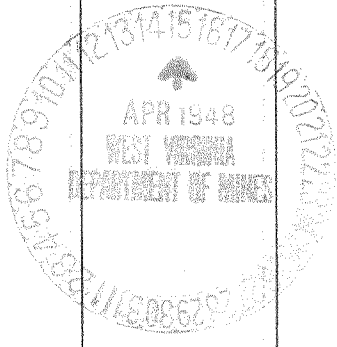
Company Pittsburgh & West Va Gas Company.
Address Clarksburg, West Va.
Farm Michael Mullady Acres 113
Location (waters) Vadis S/W. 4-4
Well No. 7057 Elev. 1289' VA
District Court House County Lewis
The surface of tract is owned in fee by Mary Mullady-Guardian
for Edwin Mullady Address Weston, W. Va.
Mineral rights are owned by Mary Mullady-Guardian
for Edwin Mullady Address Weston, W. Va.
Drilling commenced January 5th, 1916
Drilling completed February 16th, 1916
Date Shot _____ From _____ To _____
With _____

Casing and Tubing	Used in Drilling	Left in Well	Packers
Size			
16			Kind of Packer
13			
10	140'	140'	Size of
8 1/4	905'	905'	
6 5/8	2157'	2157'	Depth set
5 3/16			
3			Perf. top
2			Perf. bottom
Liners Used			Perf. top
			Perf. bottom

Open Flow _____ /10ths Water in _____ Inch
_____ /10ths Merc. in _____ Inch
Volume _____ Cu. Ft.
Rock Pressure _____ lbs. _____ hrs.
Oil _____ bbls., 1st 24 hrs.
Fresh water _____ feet _____ feet
Salt water _____ feet _____ feet

CASING CEMENTED _____ SIZE _____ No. Ft. _____ Date _____
COAL WAS ENCOUNTERED AT _____ FEET _____ INCHES
_____ FEET _____ INCHES _____ FEET _____ INCHES
_____ FEET _____ INCHES _____ FEET _____ INCHES

Formation	Color	Hard or Soft	Top	Bottom	Oil, Gas or Water	Depth Found	Remarks
Slate	Red	Soft	0	10			
Sand	White	"	10	15			
Slate	Red	"	15	80			
Sand	White	"	80	120			
Slate	"	"	120	170			
"	Red	"	170	230			
Line	White	Hard	230	310			
Slate	Red	Soft	310	350			
Line	White	Hard	350	390			
Red Rock	Red	Soft	390	440			
Sand	White	Hard	440	465			
Slate	"	Soft	465	485			
Line	"	Hard	485	520			
Slate	"	Soft	520	545			
Sand	"	Soft&Hard	545	595			
Slate	"	Soft	595	600			
Line	"	Hard	600	610			
Slate	"	Soft	610	640			
Line	"	Hard	640	688			
Slate	Red	Soft	688	735			
Slate	White	Soft	735	740			
Little Dunkard	"	Hard	740	780			
Slate	"	Soft	780	795			
Line	"	Hard	795	870			
Red Rock	Red	Soft	870	885			
Slate	White	"	885	895			
Line	"	Hard	895	960			
Slate	"	Soft	960	985			
Line	"	Hard	985	995			
Slate	"	Soft	995	1000			
Line	"	Hard	1000	1040			
Slate	"	Soft	1040	1048			
Line	"	Hard	1048	1168			
1st. Salt Sand	"	"	1168	1208			
Slate	"	Soft	1208	1245			
Line	"	Hard	1245	1340			
Slate	"	Soft	1340	1345			
Salt Sand	Dark	Hard	1345	1540			



Formation	Color	Hard or Soft	Top	Bottom	Oil, Gas or Water	Depth Found	Remarks
Slate&Shells	Dark	Soft	1540	1620			
Line	"	Hard	1620	1674			
Slate&Shells	White	"	1674	1760			
Waxton Sand	"	"	1760	1845			
Slate	Dark	Soft	1845	1880			
Sand	"	Hard	1880	1910			
Slate	"	Soft	1910	1912			
Sand	White	Hard	1912	1932			
Slate	"	Soft	1932	1935			
Sand	"	Hard	1935	2005			
Red Rock	Red	Soft	2005	2030			
Little Line	White	Hard	2030	2065			
Pencil Cave	"	Soft	2065	2080			
Big Line	"	Hard	2080	2149			
Big Injun	"	"	2149	2315	Sh. Gas	2276'	
Slate	"	Soft	2315	2360			
Sand	"	Hard	2360	2380			
Slate	"	Soft	2380	2385			
Line	"	Hard	2385	2410			
Slate&Shells	"	Soft&Hard	2410	2500			
Gantz Sand	"	Hard	2500	2512			
Slate	"	Soft	2512	2532			
Slate&Shells	"	Hard&Soft	2532	2600			
Line	"	Hard	2600	2608			
Slate&Shells	"	Hard&Soft	2608	2696			
Line	"	Hard	2696	2704			
Slate&Shells	"	Soft&Hard	2704	2799			
Gordon Sand	Gray	Hard	2799	2802			
Slate	White	Soft	2802	2812			
Line	"	Hard	2812	2825			
Slate&Shells	"	Soft&Hard	2825	2900			
Slate	"	Soft	2900	2941			
Line Shell	"	Hard	2941	2944			
Slate	"	Soft	2944	2978			
5th. Sand	"	Hard	2978	2988	Gas	2980-2985'	
Slate	Dark	Soft	2988	3003			
Total Depth.....				3003			

October 14th, 1917

Date _____, 19____

PITTSBURGH & WEST VA GAS COMPANY.

APPROVED

Owner

By W. S. McMaster
(Title)



COMPANY

add 10-7-77

Record of Well No. 7057 Located on Michael Mulady Farm Nov 15 1915
Court House District Lewis County Mo State
 Division H District No. 13 Drilled under Well Order 511
 Rig built by John Craig Began Nov 30 1915 Completed here 1916
 Well drilled by R J Lee Began Jan 5th 1916 Completed Feb 16 1916
 Depth of Well 3003 feet Size of Hole 6 7/8" Producing Gas
 Elevation: 12896

CASED WITH

REMARKS

AMOUNT	SIZE	KIND	REMARKS
16	13"	Case	
170	10"	Case	Pulled 17' - Left in 123'
905	8 1/4"	"	Pulled 77' - Left in 128'
2157	6 7/8"	"	8 1/4 x 6 7/8 B.H. Pipe pulled 1312' left in 845'

COAL VEINS

FORMATIONS

NAME	TOP	BOTTOM	OIL	GAS	WATER	REMARKS
Maize sand	1760	1845				
Big Lema	1080	1149				
Big Bryan	1149	1212				
Sandy sand	1500	1514				small
Scraper	1499	1504				
Fifth sand	1978	1988				

Plugged: 4-27-48 to 4-30-48

Aquagel	3003 - 2815
Cement	2815 - 2805
Aquagel	2805 - 2200
Cement	2200 - 1950
Aquagel	2190 - 1950
Cement	1950 - 175
Aquagel	175 - 165
Cement	165 - 5
Aquagel	5 - 5

4 1/2 mat 3" shal and down
 to 8 1/2 mat a Blue sand
 to 13 1/2 mat 2"

FIRST PRESSURE TEST IN 150' CASING

REMARKS

30 Sec. 3 lbs.
 1 Min. 5 "
 2 " 10-15/10 "
 5 " 23 "
 10 " 30 "
 15 " 50 "
 30 " "

Shot #18-1916-202 to
 Anchor 16'
 Top shot 2979 to 2987
 shell 4" x 8"
 7010 Mar 2' Before 189 MeF
 8710 " 2" After 382 MeF
 5-10-15-20-23-25-37-60-75-112

Rock Pressure 775 " in 7 ft head

Taken Jan 16 1916

By R. G. ...

WELL TUBED AND PACKED 2/24/1916

VIZ: - 1309 to 2655 of 2" tubing
 171 " 350 " "
 678 x 3" anchor packer
 678 x 2' " "

State
 1179 to 7781' of 2" above all
 678 x 2" blue pack at 7218
 189 to 372' of 2" below
 8 " 165' " 3" below
 678 x 3" blue pack at 2818
 799 to 185' of 3" tubing below all

FIRST PRESSURE TEST IN TUBING

REMARKS

30 Sec. 25 lbs. 2' 20 1/2 min
 1 Min. 40 " 30 1 "
 2 " 55 65/75 " 35 2 "
 5 " 80 " 45 4 "
 10 " 105 " 50 5 "
 15 " 130 " 70 10 "
 30 " 13/10 Max 2'

Pulled 25 30' of 2"
 Left in 350' of 2"
 Left in 123' of 2"

Rock Pressure " in

Taken 19

By

MATERIAL FOR THIS WELL RECEIVED FROM FOLLOWING SOURCES:

1 old Rig Lumber " Mertg #7077
 1 " " Irons " "
 1 " " Lumber " "
 6407 " " Lumber " Peter Murray @ 35⁰⁰ 10

FORMATIONS

NAME	Top	Bottom	OIL	GAS	WATER	REMARKS
Slate	00	10				
Sand	5	15				
Slate	15	80				
Sand	80	120				
Slate	120	170				
Slate	170	230				
Lime	230	310				
Slate	310	350				
Lime	350	390				
Red Rock	390	440				
Sand	440	465				
Slate	465	485				
Lime	485	520				
Slate	520	545				
Sand	545	595				
Slate	595	600				
Lime	600	610				
Slate	610	640				
Lime	640	688				
Slate	688	735				
Slate	735	740				
Little Dunkard	740	780				
Slate	780	795				
Lime	795	870				
Red Rock	870	885				
Slate	885	895				
Lime	895	960				
Slate	960	985				
Lime	985	995				
Slate	995	1000				
Lime	1000	1040				
Slate	1040	1048				
Lime	1048	1168				
1st Salt Sand	1168	1200				
Slate	1200	1245				
Lime	1245	1340				
Slate	1340	1345				
Salt Sand	1345	1540				
Slate & Shells	1540	1620				
Lime	1620	1674				
Slate & Shells	1674	1760				
Maxon sand	1760	1845				
Slate	1845	1880				
Sand	1880	1910				
Slate	1910	1912				
Sand	1912	1932				
Slate	1932	1935				
Sand	1935	2005				
Red Rock	2005	2030				
Little Lime	2030	2065				
Slate (P.C.)	2065	2080				
Big Lime	2080	2147				
Big Injun	2147	2215		2275		
Slate	2215	2360				
Sand	2360	2380				
Slate	2380	2385				
Lime	2385	2410				
Slate & Shells	2410	2500				
Gantz Sand	2500	2512				
Slate	2512	2532				
Slate & Shells	2532	2600				
Lime	2600	2608				
Slate & Shells	2608	2636				
Lime	2636	2704				

FORMATIONS

NAME	Top	Bottom	OIL	GAS	WATER	REMARKS
Slate & Shells	2704	2799				
Gordon Sand	2799	2802				
Slate	2802	2812				
Lime	2812	2825				
Slate & Shells	2825	2900				
Slate	2900	2941				
Lime Shell	2941	2944				
Slate	2944	2978		2280		
Sand (Fifth)	2978	2988		2985		
Slate	2988	3005	Total Depth			