

Latitude

Longitude

2.385  
blw

Topo Location

7.5' Loc. \_\_\_\_\_ 15' Loc. \_\_\_\_\_  
(calc.) \_\_\_\_\_

Company \_\_\_\_\_

Farm \_\_\_\_\_

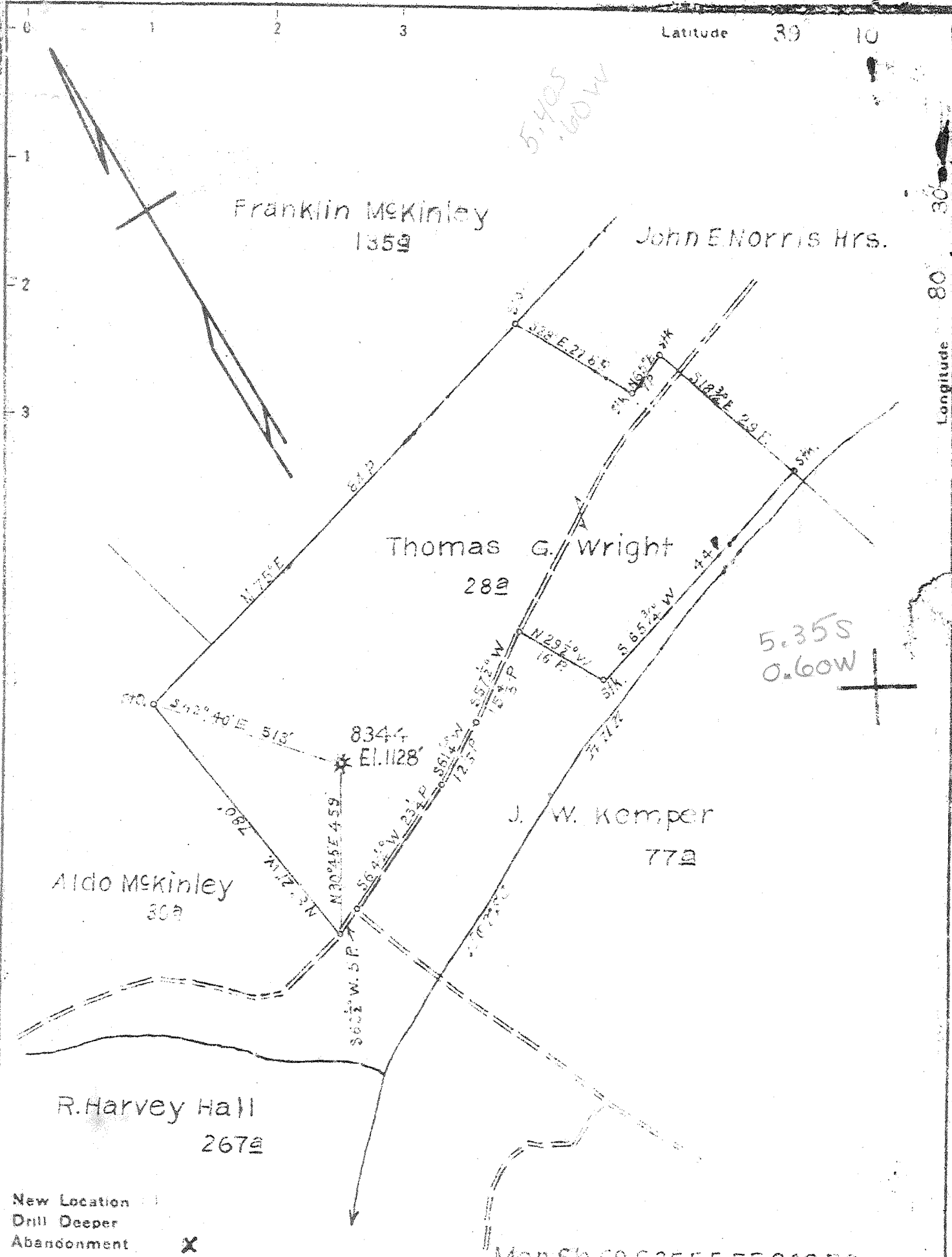
15' Quad \_\_\_\_\_  
(sec.)

7.5' Quad Camden

District Freemans Creek

WELL LOCATION PLAT

County 041 Permit 30387



Map Sh. 69 S 25 E 5 FB 880 P 9

Company <u>Hope Natural Gas Co.</u>	
Address <u>Clarksburg W. Va.</u>	
Farm <u>Thomas G. Wright</u>	
Tract _____ Acres <u>28</u>	Lease No. <u>53211</u>
Well (Farm) No. _____	Serial No. <u>8344</u>
Elevation (Spirit Level) <u>1128'</u>	
Quadrangle <u>Vadis</u>	
County <u>Lewis</u>	District <u>Freemans Crk</u>
Engineer <u>W. M. Bowers</u>	
Engineer's Registration No. <u>900</u>	
File No. _____	Drawing No. _____
Date <u>2-26-48</u>	Scale <u>1" = 20 P</u>

STATE OF WEST VIRGINIA  
 DEPARTMENT OF MINES  
 OIL AND GAS DIVISION  
 CHARLESTON

**WELL LOCATION MAP**  
 FILE NO. LEW-387-A

+ Denotes location of well on United States Topographic Maps, scale 1 to 62,500, latitude and longitude lines being represented by border lines as shown

- Denotes one inch spaces on border line of original tracing.



STATE OF WEST VIRGINIA  
DEPARTMENT OF MINES  
OIL AND GAS DIVISION

471

WELL RECORD

Permit No. 387-A

Oil or Gas Well (KIND)

Company Hope Natural Gas Company  
 Address 445 West Main St. Clarksburg, W.Va.  
 Farm T.G. Wright Acres 28  
 Location (waters) \_\_\_\_\_  
 Well No. 8344 Elev. 1128  
 District Freemans Creek County Lewis  
 The surface of tract is owned in fee by \_\_\_\_\_  
 Address \_\_\_\_\_  
 Mineral rights are owned by \_\_\_\_\_  
 Address \_\_\_\_\_  
 Drilling commenced July 26, 1909  
 Drilling completed September 1, 1909  
 Date Shot \_\_\_\_\_ From \_\_\_\_\_ To \_\_\_\_\_  
 With \_\_\_\_\_  
 Open Flow \_\_\_\_\_ /10ths Water in \_\_\_\_\_ Inch  
 \_\_\_\_\_ /10ths Merc. in \_\_\_\_\_ Inch  
 Volume \_\_\_\_\_ Cu. Ft.  
 Rock Pressure \_\_\_\_\_ lbs. \_\_\_\_\_ hrs.  
 Oil \_\_\_\_\_ bbls., 1st 24 hrs.  
 Fresh water None recorded feet \_\_\_\_\_ feet  
 Salt water none recorded feet \_\_\_\_\_ feet

Casing and Tubing	Used in Drilling	Left in Well	Packers
Size			Kind of Packer
16			
13			
10	146	Pulled	Size of
8 1/4	909	909	
6 5/8	1367	1367	Depth set
5 3/16	1974	Pulled	
3			Perf. top
2	2220	Pulled	Perf. bottom
Liners Used			Perf. top
			Perf. bottom

NOT  
 CASING CEMENTED \_\_\_\_\_ SIZE \_\_\_\_\_ No. Ft. \_\_\_\_\_ Date \_\_\_\_\_  
 COAL WAS ENCOUNTERED AT \_\_\_\_\_ Below FEET \_\_\_\_\_ INCHES  
 \_\_\_\_\_ FEET \_\_\_\_\_ INCHES FEET \_\_\_\_\_ INCHES  
 \_\_\_\_\_ FEET \_\_\_\_\_ INCHES FEET \_\_\_\_\_ INCHES

Formation	Color	Hard or Soft	Top	Bottom	Oil, Gas or Water	Depth Found	Remarks
Little Dunkard			190	210			
Big Dunkard			370	420			
Gas sand			430	470			
First Salt			480	550			
Second Salt			646	700			
Maxon			1070	1100			
Little Lime			1195	1225			
Pencil cave			1220	1275			
Big Lime			1275	1325			
Big Injun			1325	1442	gas	1337	
Gantz			1685	1703			
Fifty foot			1760	1780			
Thirty foot			1860	1875			
Gordon stray			1905	1920			
Gordon			1923	1953			
Fifth			2151	2162	gas	2155	
Total depth				2214			

