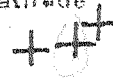
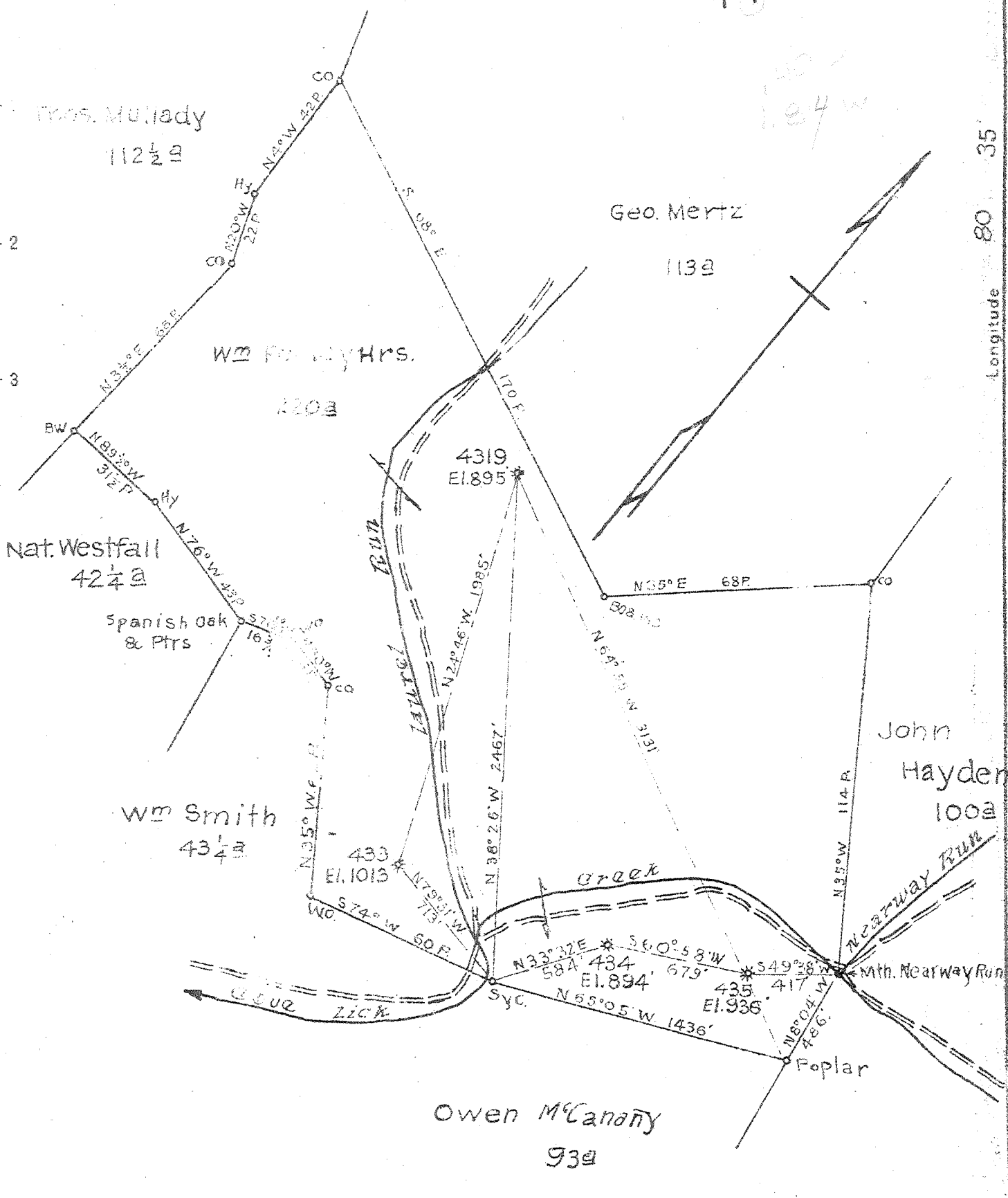


Latitude 39 00



Longitude 80 35



New Location  
Drill Deeper  
Abandonment X 434

Map Sh. 72-Sq. S 32 W 2 FB 820 P-1-2.

Company	Hope Natural Gas Co.
Address	Clarksburg, W. Va.
Farm	Wm Fealey Hrs
Tract	Acres 220 Lease No. 4050
Well (Farm) No.	Serial No. As Shown (434)
Elevation (Spirit Level)	As shown (434)
Quadrangle	Burnsville
County	Lewis District Courthouse
Engineer	Wm Bowers
Engineer's Registration No.	900
File No.	Drawing No.
Date	7-5-1946 Scale 1" = 40 P.

STATE OF WEST VIRGINIA  
DEPARTMENT OF MINES  
OIL AND GAS DIVISION  
CHARLESTON

WELL LOCATION MAP  
FILE NO. LEW-336-A

+ Denotes location of well on United States Topographic Maps, scale 1 to 62,500. latitude and longitude lines being represented by border lines as shown.

- Denotes one inch spaces on border line of original tracing.



421

STATE OF WEST VIRGINIA  
DEPARTMENT OF MINES  
OIL AND GAS DIVISION

WELL RECORD

Permit No. 336-A

~~Oil~~ or Gas Well \_\_\_\_\_ (KIND)

Company Hope Natural Gas Company.  
Address 445 West Main St. Clarksburg, W. Va.  
Farm Wm. Fealey Hrs. Acres 220  
Location (waters) \_\_\_\_\_  
Well No. 434 Elev. 894  
District Courthouse County Lewis  
The surface of tract is owned in fee by \_\_\_\_\_  
Address \_\_\_\_\_  
Mineral rights are owned by \_\_\_\_\_  
Address \_\_\_\_\_  
Drilling commenced \_\_\_\_\_  
Drilling completed August 23, 1901  
Date Shot \_\_\_\_\_ From \_\_\_\_\_ To \_\_\_\_\_  
With \_\_\_\_\_

Casing and Tubing	Used in Drilling	Left in Well	Packers
Size			
16			Kind of Packer _____
13			
10	220	220	Size of _____
8 1/4	820	820	
6 5/8	1830	1830	Depth set _____
5 3/16			
3	2695	2695	Perf. top _____
2			Perf. bottom _____
Liners Used			Perf. top _____
			Perf. bottom _____

Open Flow \_\_\_\_\_ /10ths Water in \_\_\_\_\_ Inch  
\_\_\_\_\_ /10ths Merc. in \_\_\_\_\_ Inch  
Volume \_\_\_\_\_ Cu. Ft.  
Rock Pressure \_\_\_\_\_ lbs. \_\_\_\_\_ hrs.  
Oil \_\_\_\_\_ bbls., 1st 24 hrs.  
Fresh water no record feet \_\_\_\_\_ feet  
Salt water no record feet \_\_\_\_\_ feet

NOT CASING CEMENTED \_\_\_\_\_ SIZE \_\_\_\_\_ No. Ft. \_\_\_\_\_ Date \_\_\_\_\_  
COAL WAS ENCOUNTERED AT 205 FEET 7' Est INCHES  
\_\_\_\_\_ FEET \_\_\_\_\_ INCHES FEET \_\_\_\_\_ INCHES  
\_\_\_\_\_ FEET \_\_\_\_\_ INCHES FEET \_\_\_\_\_ INCHES

Formation	Color	Hard or Soft	Top	Bottom	Oil, Gas or Water	Depth Found	Remarks
	Pittsburgh	Coal	205	212 Est			
	Dunkard		800	?			
	Salt		970	?			
	Big Injun		1890	2180 Est			
	Stray		2487	?			
	Gordon		2497	2507	gas	2499	
	Fifth		2680	2686	gas	2682	
	Total depth			2695			

