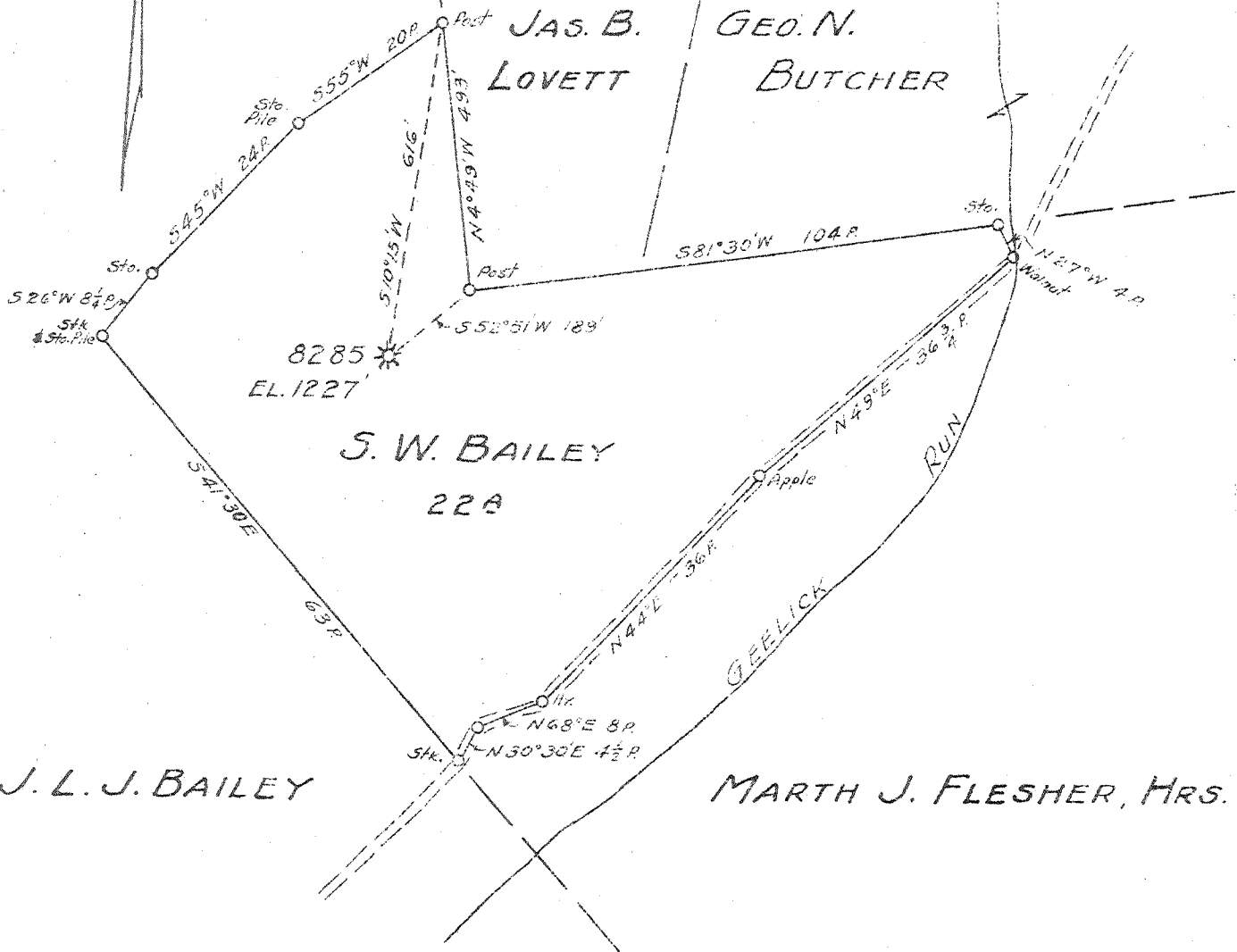


42.3  
3.56



New Location  
 Drill Deeper  
 Abandonment

MAP SH. 57 SQ. S-26 E-7 F.B. 766 P. 31

Company HOPE NATURAL GAS CO.  
 Address CLARKSBURG, W. VA.  
 Farm S. W. BAILEY  
 Tract \_\_\_\_\_ Acres 22 Lease No. 53162  
 Well (Farm) No. \_\_\_\_\_ Serial No. 8285  
 Elevation (Spirit Level) 1227'  
 Quadrangle WESTON  
 County LEWIS District FREEMAN SCR.  
 Engineer W. M. Bowers  
 Engineer's Registration No. 900  
 File No. \_\_\_\_\_ Drawing No. \_\_\_\_\_  
 Date APRIL 4, 1946 Scale 1" = 2000'

STATE OF WEST VIRGINIA  
 DEPARTMENT OF MINES  
 OIL AND GAS DIVISION  
 CHARLESTON

WELL LOCATION MAP  
 FILE NO. LEW-333-A

+ Denotes location of well on United States Topographic Maps, scale 1 to 62,500, latitude and longitude lines being represented by border lines as shown.  
 - Denotes one inch spaces on border line of original tracing.



STATE OF WEST VIRGINIA  
DEPARTMENT OF MINES  
OIL AND GAS DIVISION

419

WELL RECORD

Permit No. 333-A Oil or Gas Well \_\_\_\_\_ (KIND)

Company Hope Natural Gas Company.  
 Address 445 West Main St. Clarksburg, W. Va.  
 Farm S.W. Bailey Acres 22  
 Location (waters) \_\_\_\_\_  
 Well No. 8285 Elev. 1227  
 District Freemans Creek County Lewis  
 The surface of tract is owned in fee by \_\_\_\_\_  
 Address \_\_\_\_\_  
 Mineral rights are owned by \_\_\_\_\_  
 Address \_\_\_\_\_  
 Drilling commenced April 26, 1909  
 Drilling completed May 26, 1909  
 Date Shot \_\_\_\_\_ From \_\_\_\_\_ To \_\_\_\_\_  
 With \_\_\_\_\_  
 Open Flow \_\_\_\_\_ /10ths Water in \_\_\_\_\_ Inch  
 \_\_\_\_\_ /10ths Merc. in \_\_\_\_\_ Inch  
 Volume \_\_\_\_\_ Cu. Ft.  
 Rock Pressure \_\_\_\_\_ lbs. \_\_\_\_\_ hrs.  
 Oil \_\_\_\_\_ bbls., 1st 24 hrs.  
 Fresh water none recorded feet \_\_\_\_\_ feet  
 Salt water none recorded feet \_\_\_\_\_ feet

Casing and Tubing	Used in Drilling	Left in Well	Packers
Size			Kind of Packer
16			
13			
10	208	Pulled	Size of
8 1/4	911	Pulled	
6 5/8	1446	1446	Depth set
5 3/16	2080	2080	
3			Perf. top
2			Perf. bottom
Liners Used			Perf. top
			Perf. bottom

CASING CEMENTED NOT SIZE \_\_\_\_\_ No. Ft. \_\_\_\_\_ Date \_\_\_\_\_  
 Below  
 COAL WAS ENCOUNTERED AT \_\_\_\_\_ FEET \_\_\_\_\_ INCHES  
 \_\_\_\_\_ FEET \_\_\_\_\_ INCHES FEET \_\_\_\_\_ INCHES  
 \_\_\_\_\_ FEET \_\_\_\_\_ INCHES FEET \_\_\_\_\_ INCHES

Formation	Color	Hard or Soft	Top	Bottom	Oil, Gas or Water	Depth Found	Remarks
Little Dunkard			325	340			
Big Dunkard			370	420			
Gas Sand			475	505			
First Salt			515	610			
Second Salt			925	1020			
Maxon			1240	1380			
Pencil cave			1380	1385			
Big Lime			1385	1480			
Big Injun			1480	1580			
S. ghaw			1585	1645			
Gantz			1860	1870	gas	1860	
Thirty foot			1970	1995			
Gordon stray			2000	2015			
Gordon			2090	2117	gas	2100	
Fourth			2135	2148			
Fifth			2251	2269	gas	2256 2262	
Total depth				2410			

