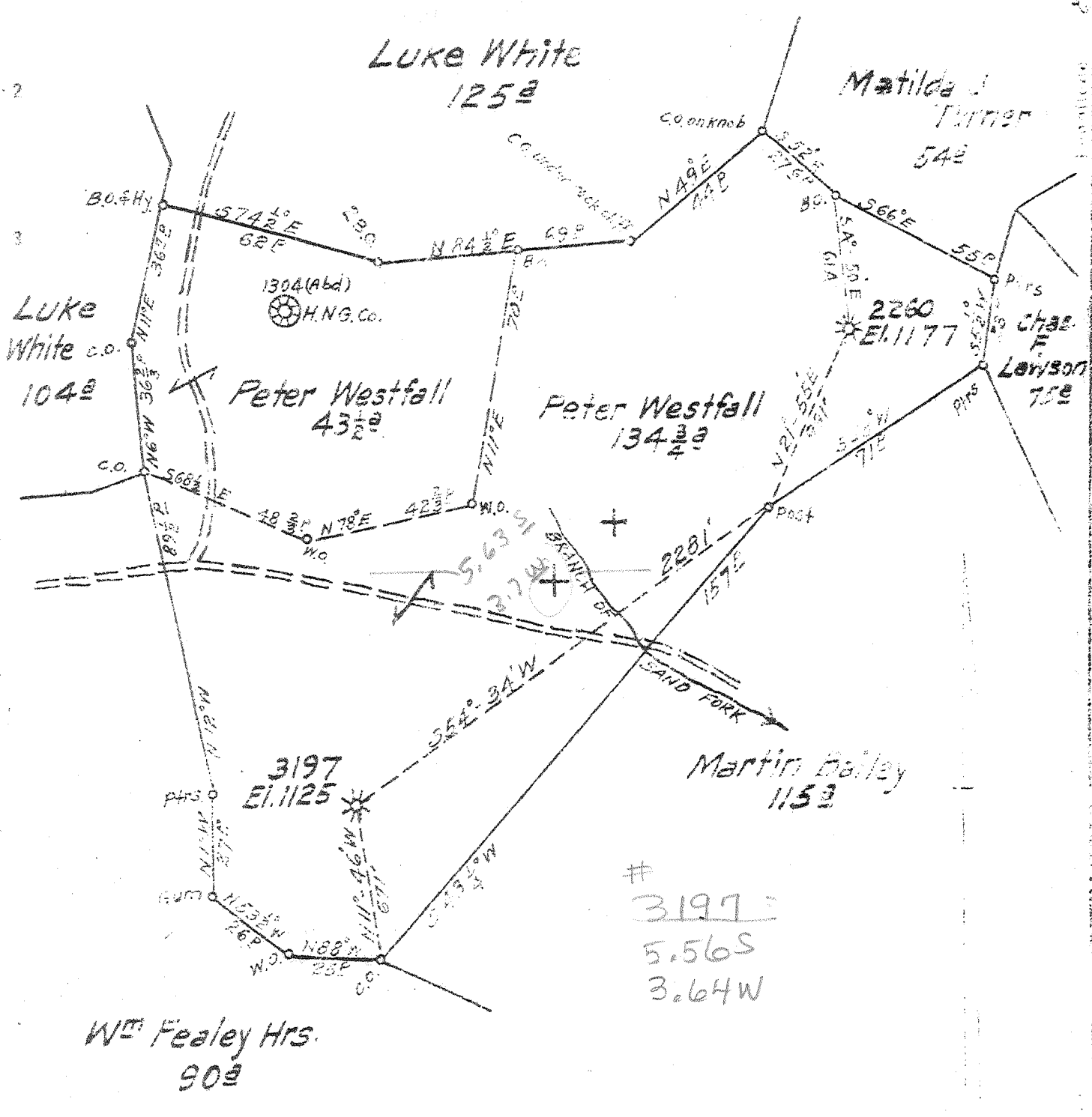




5.56 S  
3.65 W



New Location  
 Drill Deeper  
 Abandonment **X 3197**

Company Hope Natural Gas Co.  
 Address Clarksburg, W. Va.  
 Farm Peter Westfall  
 Tract \_\_\_\_\_ Acres 178 Lease No. 15634  
 Well (Farm) No. \_\_\_\_\_ Serial No. 2260-3197  
 Elevation (Spot Level) 1177 & 1125  
 Quadrangle Yadis  
 County Lewis District Court House  
 Engineer Wm Bowers  
 Engineer's Registration No. 900  
 File No. \_\_\_\_\_ Drawing No. \_\_\_\_\_  
 Date Oct 5, 1945 Scale 1" = 40'

STATE OF WEST VIRGINIA  
 DEPARTMENT OF MINES  
 OIL AND GAS DIVISION  
 CHARLESTON

WELL LOCATION MAP  
 FILE NO. LEW 304-A-10319

+ Denotes location of well on United States Topographic Map, section 36, 62, 500' scale, and latitude and longitude lines being marked by dotted lines as shown.

\* Denotes one inch spot on bearing and original tracing.



397

STATE OF WEST VIRGINIA  
DEPARTMENT OF MINES  
OIL AND GAS DIVISION

WELL RECORD

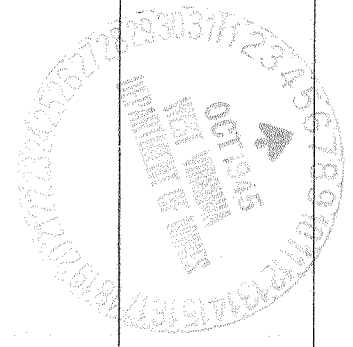
Permit No. \_\_\_\_\_ Oil or Gas Well \_\_\_\_\_ (KIND)

Company Hope Natural Gas Company.  
 Address 445 West Main St. Clarksburg, W. Va.  
 Farm Peter westfall Acres 178  
 Location (waters) \_\_\_\_\_  
 Well No. 3197 Elev. 1125  
 District Court House County Lewis  
 The surface of tract is owned in fee by \_\_\_\_\_  
 Address \_\_\_\_\_  
 Mineral rights are owned by \_\_\_\_\_  
 Address \_\_\_\_\_  
 Drilling commenced October 30, 1913  
 Drilling completed January 17, 1914  
 Date Shot \_\_\_\_\_ From \_\_\_\_\_ To \_\_\_\_\_  
 With \_\_\_\_\_  
 Open Flow \_\_\_\_\_ /10ths Water in \_\_\_\_\_ Inch  
 \_\_\_\_\_ /10ths Merc. in \_\_\_\_\_ Inch  
 Volume \_\_\_\_\_ Cu. Ft.  
 Rock Pressure \_\_\_\_\_ lbs. \_\_\_\_\_ hrs.  
 Oil \_\_\_\_\_ bbls., 1st 24 hrs.  
 Fresh water none recorded feet \_\_\_\_\_ feet  
 Salt water none recorded feet \_\_\_\_\_ feet

| Casing and Tubing | Used in Drilling | Left in Well | Packers              |
|-------------------|------------------|--------------|----------------------|
| Size              |                  |              |                      |
| 16                |                  |              | Kind of Packer _____ |
| 13                |                  |              |                      |
| 10                | 165              | Pulled       | Size of _____        |
| 8 1/4             | 927              | 927          |                      |
| 6 5/8             | 1972             | 1972         | Depth set _____      |
| 5 3/16            |                  |              |                      |
| 3                 |                  |              | Perf. top _____      |
| 2                 | 2657             | 2657         | Perf. bottom _____   |
| Liners Used       |                  |              | Perf. top _____      |
|                   |                  |              | Perf. bottom _____   |

Not cemented  
 CASING CEMENTED \_\_\_\_\_ SIZE \_\_\_\_\_ No. Ft. \_\_\_\_\_ Date \_\_\_\_\_  
 COAL WAS ENCOUNTERED AT 358 FEET 36 INCHES  
 \_\_\_\_\_ FEET \_\_\_\_\_ INCHES \_\_\_\_\_ FEET \_\_\_\_\_ INCHES  
 \_\_\_\_\_ FEET \_\_\_\_\_ INCHES \_\_\_\_\_ FEET \_\_\_\_\_ INCHES

| Formation      | Color | Hard or Soft | Top  | Bottom | Oil, Gas or Water | Depth Found | Remarks |
|----------------|-------|--------------|------|--------|-------------------|-------------|---------|
| Pittsburg Coal |       |              | 358  | 361    |                   |             |         |
| Little Dunkard |       |              | 760  | 874    |                   |             |         |
| Big Dunkard    |       |              | 895  | 955    |                   |             |         |
| Gas sand       |       |              | 1000 | 1135   |                   |             |         |
| First Salt     |       |              | 1155 | 1320   |                   |             |         |
| Second Salt    |       |              | 1400 | 1520   |                   |             |         |
| Maxon          |       |              | 1835 | 1890   | slow oil          | 1877        |         |
| Little Line    |       |              | 1900 | 1920   |                   |             |         |
| Pencil cave    |       |              | 1920 | 1925   |                   |             |         |
| Big Line       |       |              | 1925 | 1959   |                   |             |         |
| Big Injun      |       |              | 1959 | 2115   |                   |             |         |
| Squaw          |       |              | 2177 | 2250   |                   |             |         |
| Berea          |       |              | 2295 | 2330   |                   |             |         |
| Fifty foot     |       |              | 2514 | 2526   |                   |             |         |
| Thirty foot    |       |              | 2538 | 2565   |                   |             |         |
| Gordon stray   |       |              | 2580 | 2608   | gas               | 2595        |         |
| Gordon         |       |              | 2619 | 2639   | gas               | 2625        |         |
| Fourth         |       |              | 2641 | 2652   |                   |             |         |
| Fifth          |       |              | 2803 | 2818   |                   |             |         |
| Total depth    |       |              |      | 2886   |                   |             |         |
| Filled back to |       |              |      | 2635   |                   |             |         |



| Formation | Color | Hard or Soft | Top | Bottom | Oil, Gas or Water | Depth Found | Remarks |
|-----------|-------|--------------|-----|--------|-------------------|-------------|---------|
|           |       |              |     |        |                   |             |         |

Date October 5, 1945., 194

APPROVED Hope Natural Gas Company., Owner

By *[Signature]*  
ASS'T. to Gen. Supt.